

EQUIPMENT SHEET

BEACHWAY
TRAILING SUCTION HOPPER DREDGER

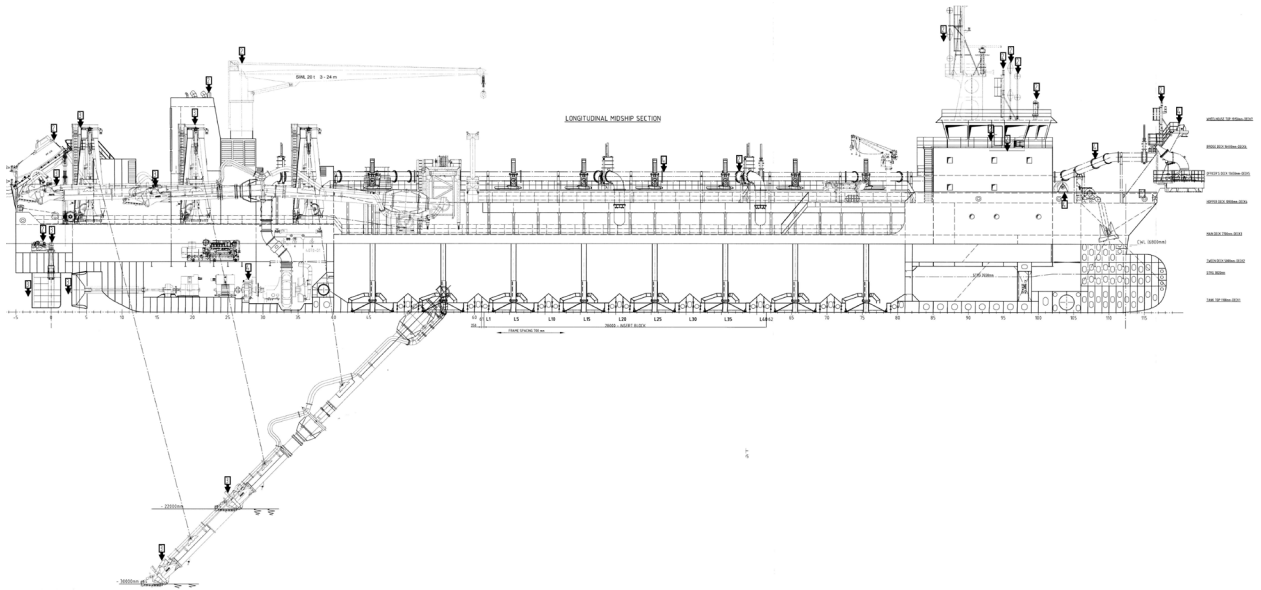


CONSTRUCTION/CLASSIFICATION

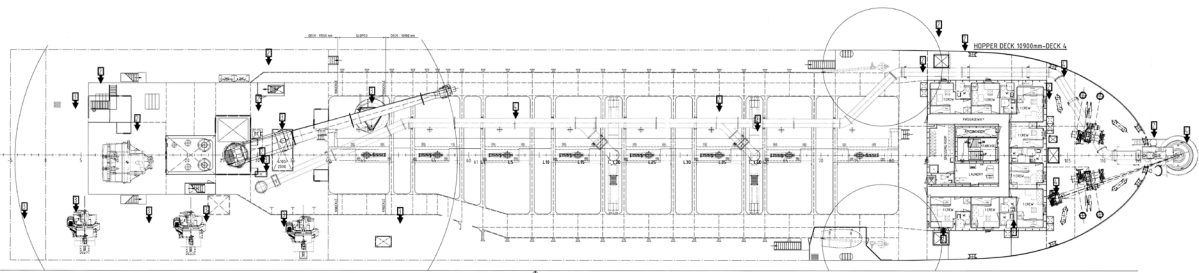
Vessel built by	J.J.Sietas KG Schiffwerft GmbH u. Co.
Year of construction	2010
Classification	I ✘ HULL ✘ MACH ✘ Hopperdredger. Unrestricted Navigation. Dredging within 15 miles from shore or within 20 miles from port; or dredging over 15 miles from shore with a significant wave height restriction to 2.5 m. ✘ AUT-UMS

MAIN VESSEL DATA

Gross tonnage	6,725
Length overall	118.47 m
Moulded breadth	21 m
Moulded depth	7.7 m
Draught empty	3.3 m
Draught loaded	6.8 m
Carrying capacity (D.W.)	9,646 m
Hopper capacity	7,350 m ³
Suction pipe diameter	1,000 mm
Max. dredging depth	30 m
Discharge systems	8 bottom doors/pump ashore/rainbow installation
Sailing speed loaded	11.5 kn
Sailing speed unloaded	12 kn
Total installed power	7,121 kW
Sand pump output	2,000 kW
Jet pump output	1,000 kW
Pump ashore output	2,000 kW
Propulsion power sailing	3,400 kW
Bow thruster	570 kW



SIDE VIEW



TOP VIEW