

# EQUIPMENT SHEET

**GATEWAY**  
TRAILING SUCTION HOPPER DREDGER



## CONSTRUCTION/CLASSIFICATION

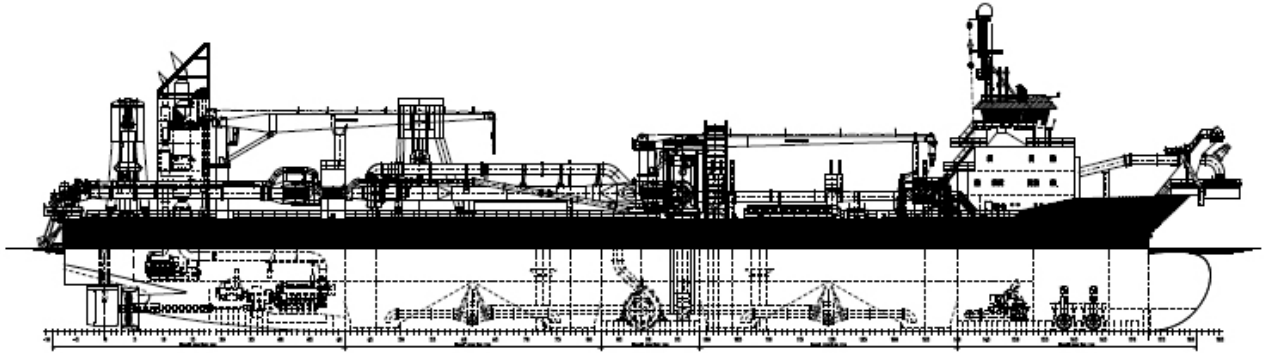
Built by	Merwede Shipyard B.V.
Year of construction	2010
Classification	I ✕ Hull ✕ Mach. Hopperdredger. Unrestricted Navigation. Dredging within 15 miles from shore or within 20 miles from port; or dredging over 15 miles from shore with a significant wave height restriction to 3.0 m. ✕ AUT-UMS

## FEATURES

2 Separate hoppers with pump room in between.
Accommodation on fore ship.
1 Suction pipe with submersible dredge pump at starboard side.
2 Fixed deckcranes.
Relative small draught.

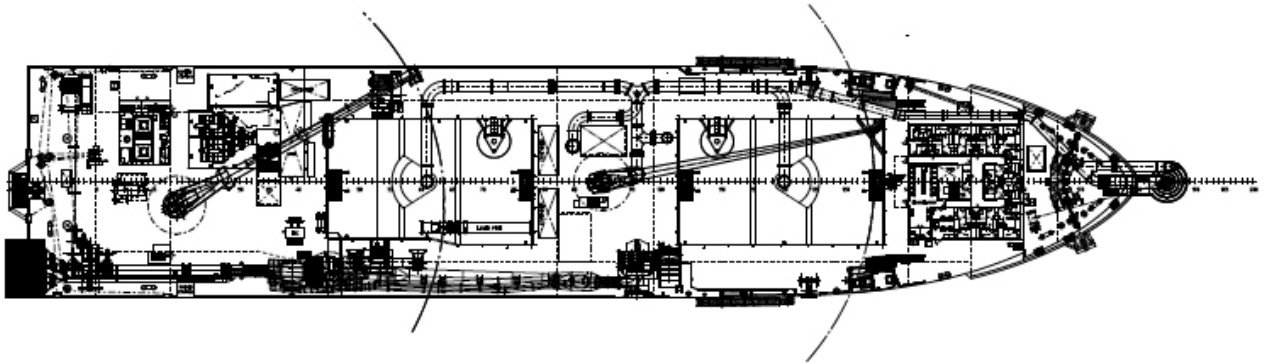
## MAIN DATA

Length overall	143.53 m
Breadth	28.00 m
Moulded depth	13.50 m
Max. draught Int. load line	8.00 m
Max. draught dredging load line	10.00 m
Carrying capacity (D.W.)	about 22,000 t
Hopper capacity	12,000 m <sup>3</sup>
Suction pipe diameter	1 x 1,200 mm
Max. dredging depth	approx. 62.00 m
Discharge systems	Dumping through bottom doors (4), shore discharge and rainbow.
Sailing speed loaded	15.4 kn
Total installed power	13,870 kW
Sand pump output	Inboard dredge pump: 7,500 kW Submersible dredge pump: 3,500 kW
Jet pump output	2 x 1,250 kW
Pump ashore output	7,500 kW
Propulsion power sailing	2 x 6,000 kW
Bow thruster	2 x 700 kW



---

**SIDE VIEW**



---

**TOP VIEW DECK LEVEL**