

EQUIPMENT SHEET

TAURUS II

SELF-PROPELLED SEA-GOING CUTTER SUCTION DREDGER



CONSTRUCTION/CLASSIFICATION

Built by	De Merwede, Hardinxveld-Giessendam/ Keppel Shipyard, Singapore
Year of construction	1983
Year of modification	2010/2011
Classification	Bureau Veritas, Dredger, Unrestricted Navigation

FEATURES

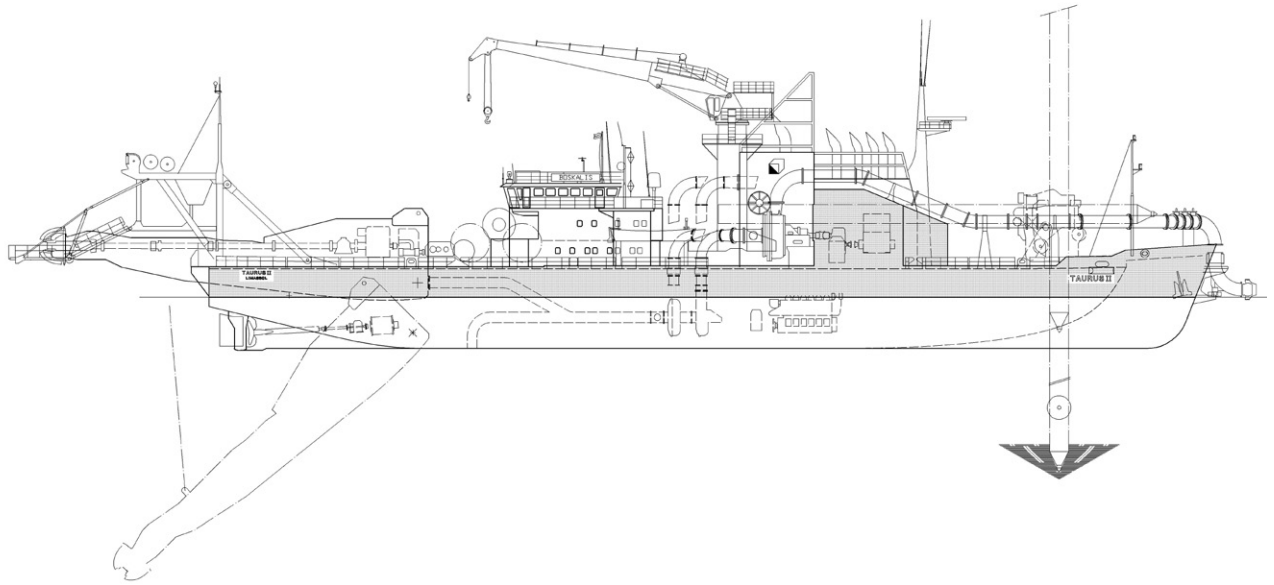
A heavy duty rock cutting sea-going self-propelled dredger designed for operations in sheltered and coastal waters up to 15 miles offshore.

Suitable for both shallow and deep water conditions.

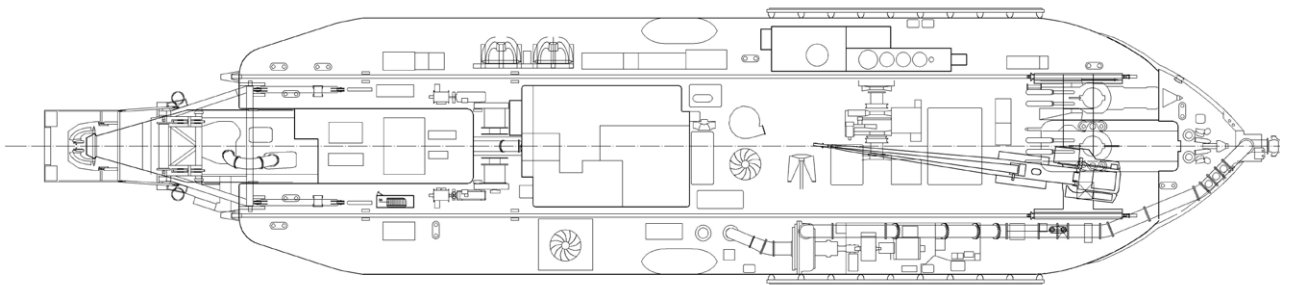
Equipped for working in hot, tropical climates and isolated locations.

MAIN DATA

Gross tonnage	4,345
Length overall	112.60 m
Length pontoon	90.26 m
Breadth	24.0 m
Moulded depth	7.52 m
International max. draught	4.85 m
Suction pipe diameter	1.0 m
Discharge pipe diameter	1.0 m
Max. dredging depth	30.00 m
Min. dredging depth	6.60 m
Anchoring system	Spud carriage
Sailing speed	11 kn
Total installed power	24,610 kW
Cutter output	4,000 kW
Suction pump output	3,300 kW
Inboard pump output	6,760 kW (2 x 3,380 kW)
Outboard / Booster pump	6,000 kW
Propulsion power sailing	3,680 kW



SIDE VIEW



TOP VIEW DECK LEVEL