

INTRODUCTION

Dockwise performed the float-over installation of the SylWin Alpha converter station topside.

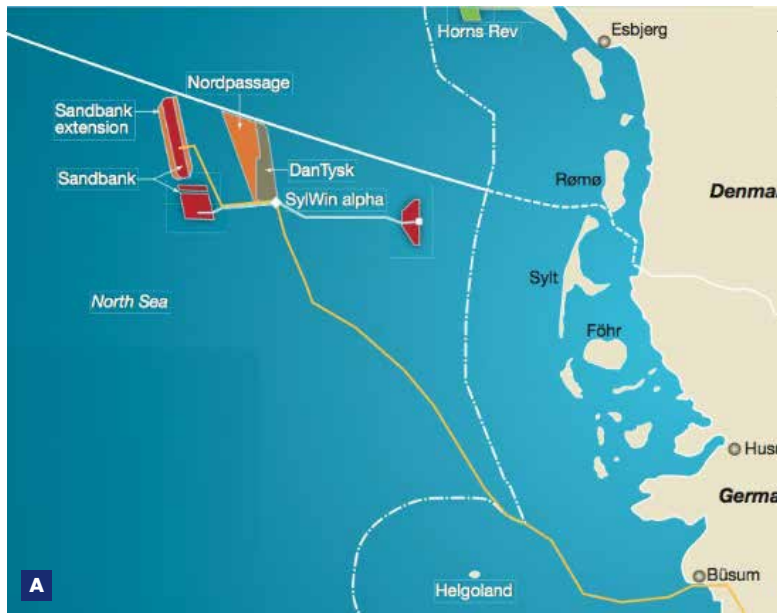
Dockwise installed the SylWin Alpha mega sized HVDCT platform topside, built by Siemens, weighing 15,200 mt, in the German Bight of the North Sea.

The Dockwise float-over solution included engineering and design for the float-over operation located 70 km from Sylt, Germany. Dockwise designed and supplied all float-over equipment and used Boskalis assets such as tugs and critical survey equipment. The barge was prepared for the operation and subsequently wet towed to site to perform the float-over. Afterwards, the barge was towed back and reinstated.

The North Sea has not seen a float-over installation in more than a quarter of century until the recent SylWin Alpha float-over. Furthermore, the HVDCT station is the first topside of its size to be installed in the North Sea by means of a float-over.

FEATURES

Client	Seaway Heavy Lifting
Location	North Sea 70 km from Sylt, Germany
Period	2014 Execution
Vessel	Barge Nordic Giant 101 & main tug Union Manta



A Location map
B SylWin Alpha converter station topside



CARGO PARTICULARS

Type	HVDC
Weight	15,200 t
Length	83.00 m
Width	56.00 m
Height	26.00 m

LOAD-OUT OPERATION

Loading	Topside was built on top of installation barge
Discharging	Float-over installation



C SylWin Alpha converter station topside

Royal Boskalis Westminster N.V.
PO Box 43
3350 AA Papendrecht
The Netherlands
T +31 78 69 69 000
F +31 78 69 69 555
royal@boskalis.com
www.boskalis.com