

EQUIPMENT SHEET

ASIAN HERCULES III
FLOATING SHEERLEG



CONSTRUCTION/CLASSIFICATION

Year of construction	2015
Registration	Singapore
Classification	ABS A1, + AMS - Heavy Lift Vessel
Call sign	9V2514

MOORING WINCHES

8 point mooring 60 t cap. 1200 m of 46 mm dia. wire rope

WINCHES

2 units cargo winches capable of pulling 20 MT at 10 m/min	
2 unit class anchor winch for handling the 6,975 kg HHP bow anchor via 76 mm grade 3 anchor chain	
Luffing	2 units luffing winches providing maximum luffing speed of 1.00 m/min at full load
Main hoist	4 units main hoisting winches for A-frame and 2 units for Jib, each capable of hoisting speeds 2 m/min at full load of 1250 MT and 5 m/min at light/no load
Jib adjustment	2 units jib adjustment winches, mounted on the A-frame, for adjustment of the Jib without load from 00 to 400 in respect to the A-frame
20 MT aux. hoist	2 units aux. hoisting winches for A-frame and 1 unit for Jib each capable of hoisting speeds of 10m/min at full load of 20 MT

MAIN DATA

Gross tonnage	16,805 t
Nett tonnage	5,041 t
Length overall	106.42 m
Beam overall (moulded)	52.00 m
Depth (moulded)	10.00 m
Displacement	26,456 t (even keel @ 5.50 m)
Speed	7 knots (4 x each about 2,000 kW)
Deck loading	20 mt/m ²
Fuel bunker capacity	2,021 m ³
Fresh water capacity	474 m ³
Ballast water capacity	14,438 m ³

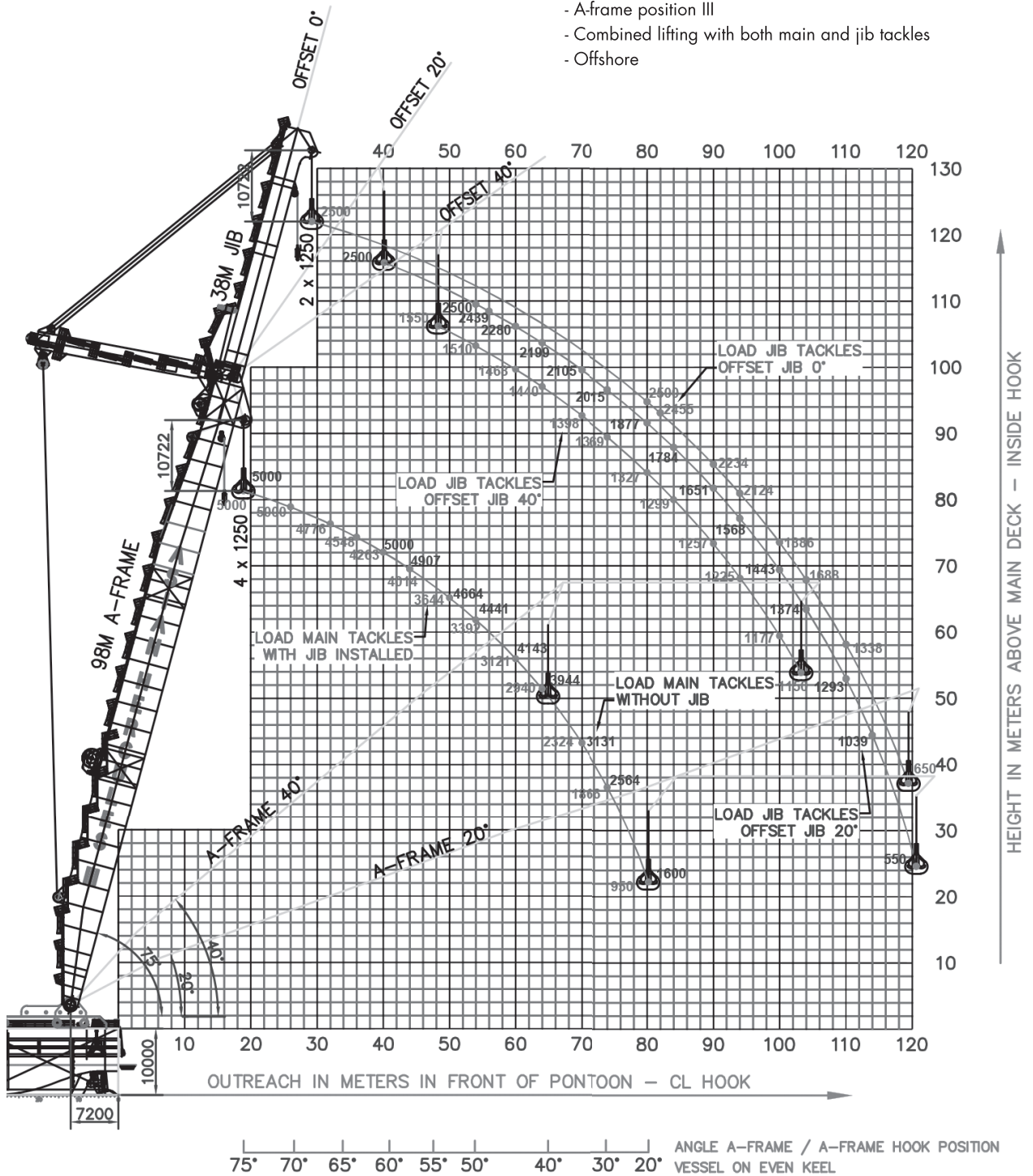
FEATURES

Accommodation for 45 persons

GENERATORS

Main generator	4 units diesel engine driven generators of output capacity 4,364 kW in total
Emergency / Auxiliary generator	1 unit diesel engine driven generator of output capacity 750 kW

- All loads are in metric tonnes and for inland water
- All load capacities are without traverses
- Following load capacities are on request:
 - A-frame position III
 - Combined lifting with both main and jib tackles
 - Offshore



**GUIDELINE CAPACITY DIAGRAM -
A-FRAME IN POSITION I**

Royal Boskalis Westminster N.V.
PO Box 43
3350 AA Papendrecht
The Netherlands
T +31 78 69 69 000
F +31 78 69 69 555
royal@boskalis.com
www.boskalis.com