

EQUIPMENT SHEET

BOKA PEGASUS

DEEP WATER ANCHOR-HANDLING TUG,
SUPPLY VESSEL



CONSTRUCTION / CLASSIFICATION

Year of built	2013
Classification	BV ✕ HULL ✕ Offshore support vessel (Anchor handling; Oil recovery; Supply; Tug; Fire-fighting 2) Unrestricted navigation
IMO	9495210
Call sign	9HA5057
Flag	Malta
Port of registry	Valletta

MAIN DATA

Length overall	91.0 m
Length BP	79.35 m
Breadth moulded	21.95 m
Depth moulded	9.56 m
Design draught	8.0 m
Deadweight	3681 t
Gross tonnage	7534 GT
Netto tonnage	2261 NT
Bollard pull	257 t
Deck area	810 m ²
Deck strength	Aft 15 t/m ² , Forward 10 t/m ²

FEATURES

Accommodation:	60 berths, 16 x single cabins, 20 x double cabins, 4 x state cabins, all with private facilities
Bunker capacity	1,242 m ³
Other tanks for cargo:	
Potable water	1,055.5 m ³
Drill water/SWB	2,930.0 m ³
Liquid mud	632.9 m ³
Brine	632.8 m ³
ORO	1,264.6 m ³
Chain locker	631.7 m ³
Dry bulk	523.9 m ³ ^{II}
Dynamic position class	DP2

PROPULSION AND MAIN SYSTEM

Main engines (Hybrid)	21,456 hp/16,000 kW
Total BHP (Boost + Azimuth)	25,200 hp/18,800 kW
Main engines	2 x MAK 16M32C
Propeller	2 x Scana CPP
Azimuth thruster	1 x 800 kW (Retractable)
Bow thruster	2 x 880 kW
Stern thruster	2 x 800 kW
Fire fighting	FIFI CLASS II

BOKA PEGASUS

DEEP WATER ANCHOR-HANDLING TUG,
SUPPLY VESSEL

ELECTRIC POWER GENERATION

Main generator	2 x 1,800 kW
Shaft alternator	2 x 4,500 kW
Emergency generator	1 x 465 kW
Supply system - Voltage	220 V, 440 V, 690 V

TOWING AND ANCHOR HANDLING EQUIPMENT

Anchor-handling winch (upper drum)

Dimension	ø 2,800 4,400 mm long
Wire capacity	6,100 m x 76 mm dia. 4,500 m x 90 mm dia.
Brake hold	600 t
Pull	500 t at 17.48 m/min
Socket storage area	Yes - 1,100 mm pocket

Towing winch (2 x lower drums)

Dimension	ø 1,500 2,200 mm long
Wire capacity	3,600 m x 76 mm dia. 2,500 m x 90 mm dia.
Brake hold	600 t
Pull	500 t at 17 m/min

Storage Reels (2 drums)

Dimension	ø 1,500 3,250 mm long
Wire capacity	4,000 m x 76 mm wire rope
Brake hold	210 t
Pull	180 t
Socket storage area	Yes - 1,100 mm pocket

DECK EQUIPMENT

Sharkjaws	2 pair Triplex SWL - 750 t
Towing pins	2 x Towing pins; SWL 350 t 2 x quarter pins; SWL 200 t
Stern roller	SWL - 750 t
Gypsies	2 x 76 mm 2 x 84 mm 1 x 127 mm
Tuggers and Capstans	2 x Hatlapa LP Tuggers - 25 t, 2 x Capstans - 15 t

Cranes:

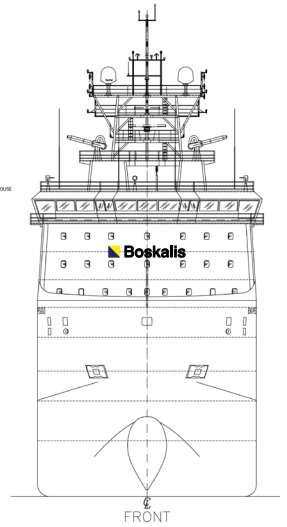
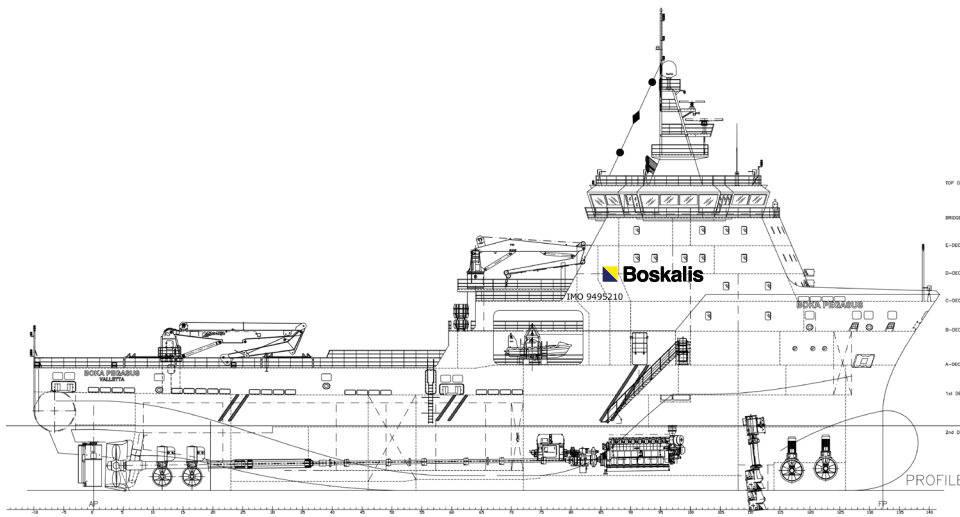
Stern crane	1 x LKB, 5 t @ 20 m (10 t @ 20 m harbour ops)
Fwd cranes	2 x TTS, 6 t @ 17 m

DISCHARGE CAPACITY

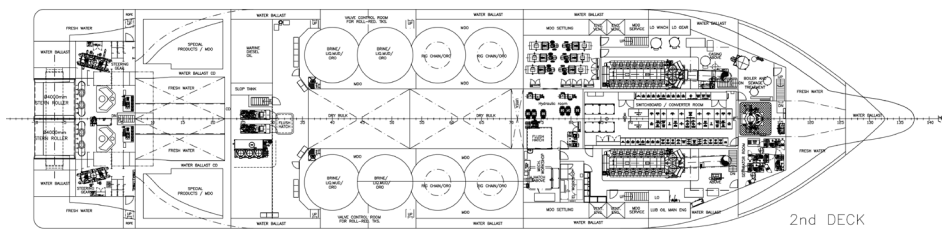
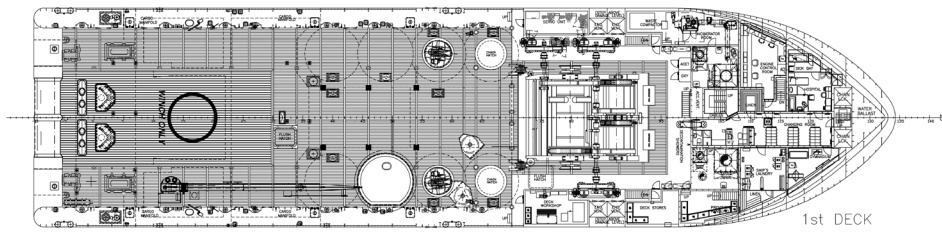
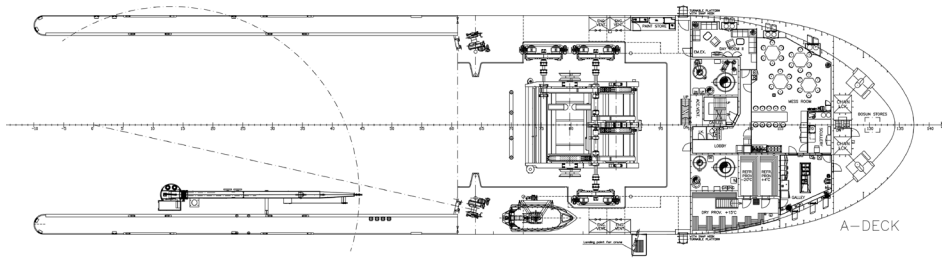
Fuel oil	2 x 150 m ³ /hr @ 9 bar
Potable water	2 x 150 m ³ /hr
Drill water	2 x 150 m ³ /hr @ 9 bar
Liquid mud	1 x 100 m ³ /hr @ 24 bar
Brine	1 x 100 m ³ /hr @ 24 bar
ORO	2 x 100 m ³ /hr @ 11 bar
Dry bulk	4 x 4 m ³ /hr @ 6 bar

SAFETY EQUIPMENT

Life raft	6 x 25 persons
Rescue boat	Normar FRC 650
Davit	1 * for the FRC



SIDE VIEW



TOP VIEW

Boskalis
 PO Box 43
 3350 AA Papendrecht
 The Netherlands
 T +31 78 69 69 000
 offshore.energy@boskalis.com
 www.boskalis.com/offshore