



CONSTRUCTION / CLASSIFICATION

Type of vessel	Cable Lay Pontoon
Place of build	Szczecin (PL)
Year of build	2011
Class	DNV-GL
Classification	GL 100 A5 Pontoon RSA (20)
GL Register No.	116519
Call sign	DHJB2
Flag	Federal Republic of Germany
Flag of authority	BG-Verkehr
Port of registry	Wilhelmshaven
Operation area	Nearshore

MAIN DATA

Gross tonnage	1,182 GT
Net tonnage	354 t
Length overall	67.10 m
Breadth overall	32.00 m
Depth moulded	3.00 m
Loaded draft max.	2.00 m
Load capacity	3,300 t
Deck load max.	3 t/m ²

WINCHES / ANCHORS

Main anchor winch	Pulling force: up to 42.0 t
Side anchor winch	Pulling force: up to 20.0 t
Mooring system	4 Point
Main anchor wire	1,600 m, 34 mm
Side anchor wires	1,600 m, 32 mm
Anchors	Delta Flipper, 4 x 2,5 t, 1 x 4,5 t

CRANE & LIFTING APPLIANCE

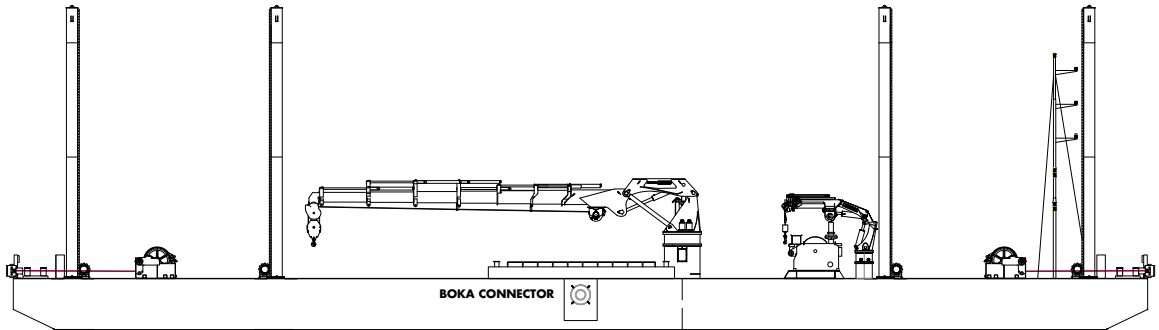
Deck crane	MKG HMC 541 HP
Deck crane	Palfinger PFM3500ME

DECK AREA AND SERVICES

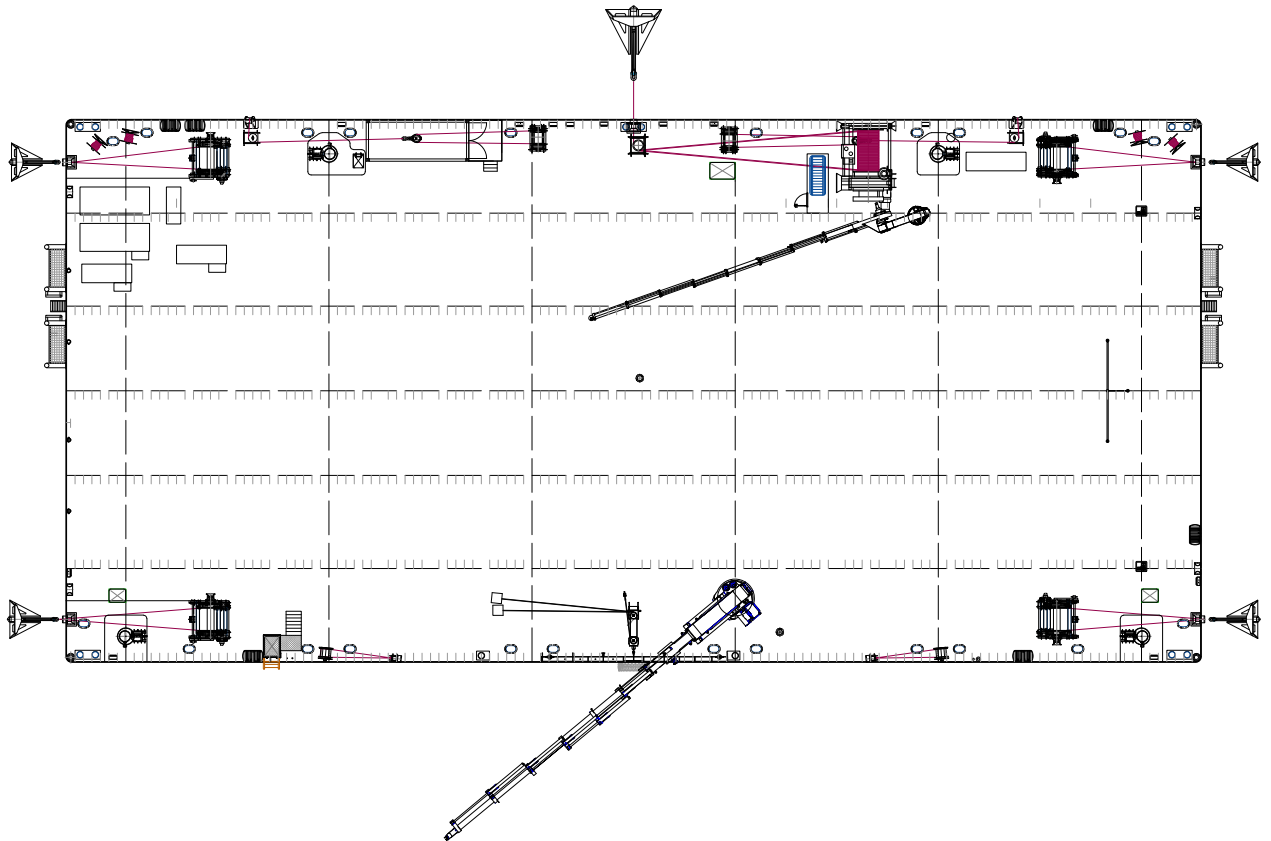
Clear deck space (unmobilised)	Approx. 2,000 m ²
Deck strength	9 mm

ACCOMMODATION

Life rafts	6 x 12 persons
------------	----------------



SIDE VIEW



TOP VIEW DECK LEVEL

