
**CONSTRUCTION / CLASSIFICATION**

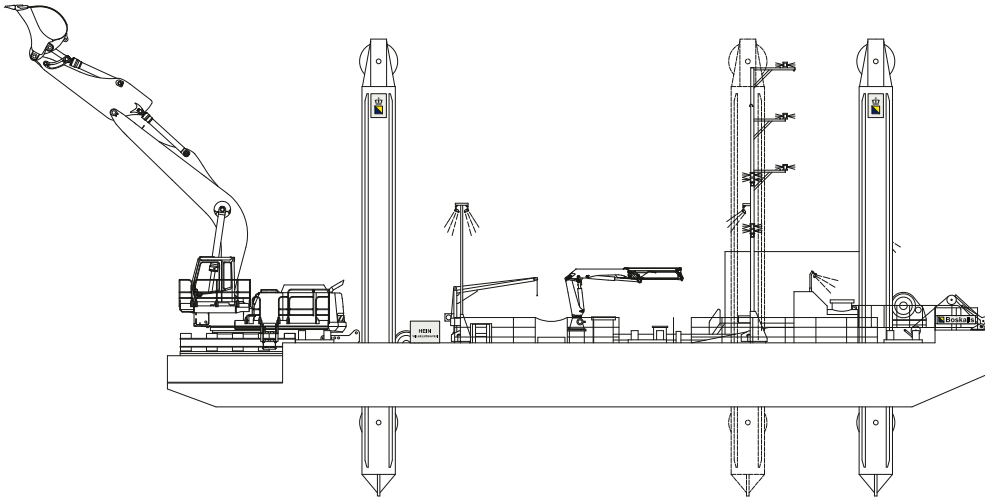
Type of vessel	Backhoe Dredger Pontoon
Place of build	de Donge, Raamsdonksveer (NL)
Year of build	1996
Call sign	DQYS
Classification	GL ✕ 100 A5 Pontoon NP
Flag	Federal Republic of Germany
Port of registry	Wilhelmshaven
Operation area	Nearshore
Operation range	Wadden Sea cruise and on waterways of zones 2 and 2 inland as well as 3, Rhine and 4

**MAIN DATA**

Gross tonnage	185 GT
Net tonnage	55 NT
Length overall	32.38 m
Breadth overall	9.54 m
Depth moulded	2.50 m (dredger deck 2.00 m)
Loaded draft max	1.68 m

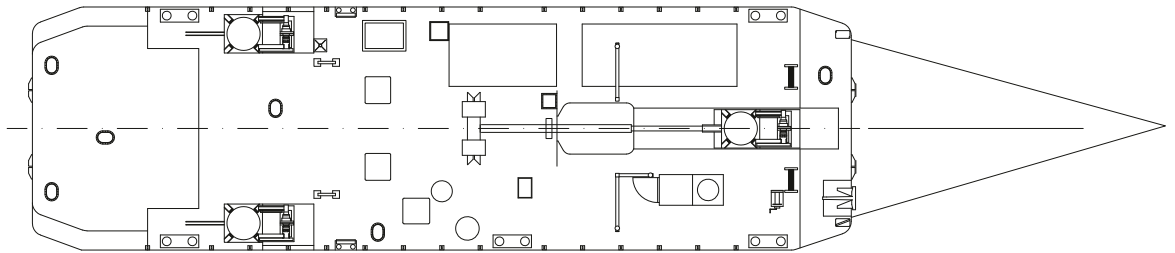
**EQUIPMENT**

Technical	3 Anchor piles D=1,016x26 mm L=16 m for 12 m water depth
	3 Anchor piles D=1,016x26 mm L=7.3 m for 4 m water depth
	1 Liebherr dredger R 974B Litronic
	1 Palfinger support crane PK 13000M
Hydraulic power unit	1 x Deutz BF 4 M 1013 E 74 kW bei 1,800 l/min
Power generator	1 x Deutz F 6 L 912 51 kW bei 1,500 l/min Generator 51 kW
Auxiliary power unit	1 Hatz 2 L 40 C 13 kW bei 1,500 l/min Generator 13.5 kW



---

**SIDE VIEW**



---

**TOP VIEW DECK LEVEL**