



CONSTRUCTION/CLASSIFICATION

Year of construction	2010
Classification	Classification Lloyds Register, ✱ 100A1, ✱ LMC, DP (AA) / Class II
Port of registry	Antwerp

FEATURES

Accommodation for 70 people, wheelhouse and accommodation fully air-conditioned / heated, 1x hospital room (not included in total POB).

Survey / ROV control, online and offline surveyrooms, client office facilities, training room, conference room and recreation area.

Where required, the vessel can be fitted with Boskalis work and inspection class ROVs. Deployment over the side with LARS.

Tank capacity: potable water 560 m³, fuel oil 560 m³, ballast water 1575 m³, lubricating oil 11.3 m³

Built in 12 man SAT system with 3 men dive bell through moonpool and 2 air dive systems with LARS over the side

Two separate water makers installed. Total capacity 25 m³/day

MAIN DATA

Gross tonnage	3578
Length overall	76 m
Breadth	18 m
Depth	6.1 m to maindeck
Deadweight	3000 t at 5.0 m draught
Main engines	2 x 1360 kW (Caterpillar) 2 x 910 kW (Caterpillar)
Emergency generators	1 x 250 kW (Caterpillar)
Main propulsion	2 x 1430 kW (Veth / Azimuth)
Forward thrusters	1 x 800 kW (Veth / Tunnel) 1 x 560 kW (Veth / Azimuth)
Economical speed	10 knots at 11 m ³ / day
Service speed	12 knots at 14 m ³ / day
Station keeping (DP)	~6 m ³ / day
DP Classification	DP (AA) / Class II
DP system	Navis
DP reference systems	3 x DGPS position 1x Sonardyne USBL 4 x Gyro compasses 2 x vertical reference units 2 x taut wire system 2 x wind sensors 1 x MRU

CONSTRUCTOR

DP II OFFSHORE VESSEL / DIVING SUPPORT VESSEL

DECK EQUIPMENT

Main crane	50T AHC for single fall, and 100T AHC for double fall 200/400 msw deployment depth
Auxiliary hoist	12.5 t at 23.3 m 200 msw deployment depth
Man riding	5 t at 23.3 m
Lashing points	12 x 10 t SWL
Helideck	Construction approved and certified according CAA regulations. Load value approved for Bell 212 and AW139 or smaller D Value 17.6 m or less T Value 6500 kg or less heli-reception and full emergency equipment

CARGO AREA

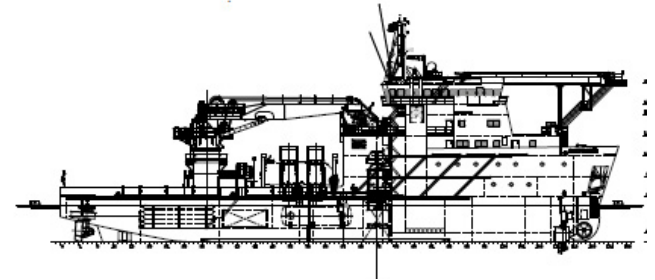
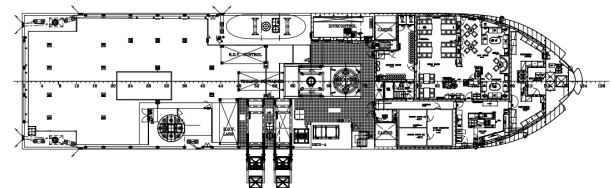
Work deck area	685 m ²
Deck load	Max. 1200 t
Deck strength	5 t / m ²

DIVE SYSTEMS

Capacity	12 man SAT system
Diving bell	3 man Sinker type
Depth rating	200 msw
Transfer speed	25 m / min. (wet)
Mixed gas storage	45 m ³ with 2 x gas reclaim systems
Hyperbaric lifeboat	1 x 12 divers + 4 crew, self-propelled, self-contained 72 hrs
Moonpool	1x diving, 4 m x 4 m
Air diving spread	standard full double air / gas mix dive system

NAVIGATION AND COMMUNICATION EQUIPMENT

Radar	1 x 12 ft. scanner, S-band 1 x ARPA, 6.5 ft. scanner X-band with additional display at DP console
Magnetic compass	1 x
Echosounder	1 x 200kHz
Navtex	1 x
Doppler log	1 x bottom and water track
Inmarsat Satcom C	2 x (with SSAS)
Inmarsat Satcom F77	1 x
V-Sat capabilities	1 x
MF/HF DSC transceiver / controller	1 x
SART radar responders	2 x
Epirb, hydroacoustic release	1 x
VHF radio transceiver DSC FD	2 x
Private Automatic Branch Exchange	1 x


SIDE VIEW

TOP VIEW DECK LEVEL

Boskalis
 PO Box 43
 3350 AA Papendrecht
 The Netherlands
 T +31 78 69 69 000
 offshore.energy@boskalis.com
 www.boskalis.com/offshore