

EQUIPMENT SHEET

ROCKPIPER
DYNAMICALLY POSITIONED FALLPIPE VESSEL



CONSTRUCTION/CLASSIFICATION

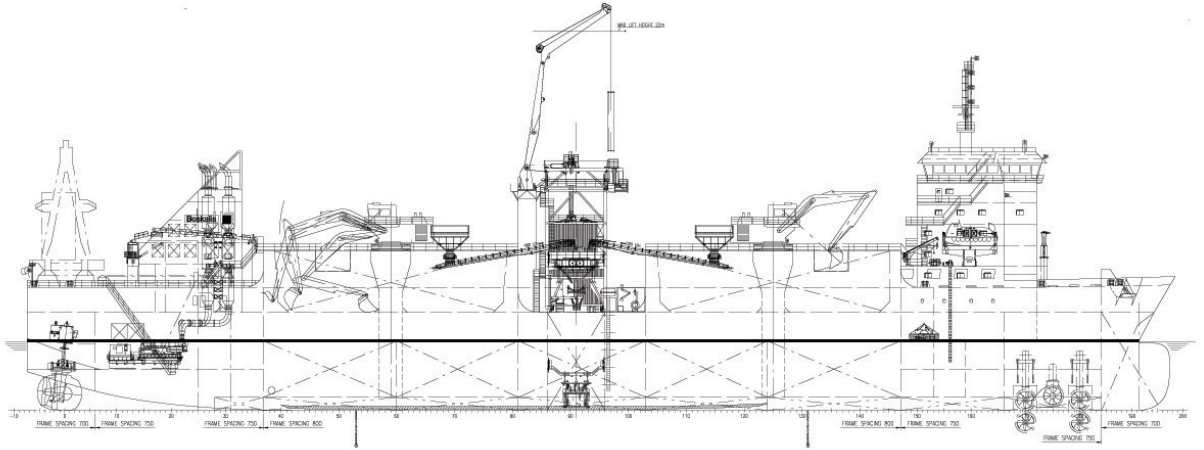
Built by	Keppel Singmarine Pte Ltd
Year of construction	2011
Classification	Bureau Veritas

MAIN DATA

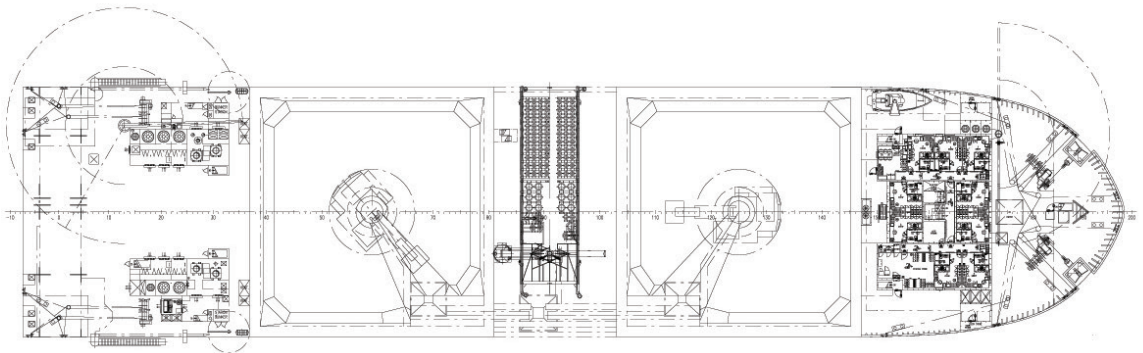
Dynamic positioning system	DP-2
Positioning system	DGPS, HIPAP, Fanbeam
Length overall	158.60 m
Breadth	36 m
Moulded depth	13.50 m
Design draught	9.40 m
Cargo carrying capacity	24,000 t
Cargo hold capacity	15,500 m ³
Sailing speed loaded	13.5 kn
Total installed power	15,192 kW (3x4,500kW + 1x1,200kW + 1x492kW)
Main engines	3 x 4,500 kW (3x main generator sets)
Main propellers	2 x 4,500 kW (2x azimuth thrusters)
Azimuth thrusters	2 x 1,500 kW (2x retractable thrusters)
Bow thruster	1 x 1,000 kW

FEATURES

- Completely new ship design, fallpipe system and rock installation system.
- Rock installation capacity abt. 2,000 t/h.
- Installation depth 1,500 m through fallpipe with inner diameter of abt. 700 mm.
- Diesel electric propulsion system comprising three main diesel generator sets and one auxiliary diesel generator set.
- Accommodation on fore ship, complement 60 persons.
- Engine room in aft ship.
- Rock installation system and moonpool in mid ship.
- Innovative fall pipe ROV with integrated survey ROV.
- Optional: Side Chute for rock installation close to structures and in shallow waters.
- Optional: Deflector, mountable on Fallpipe ROV for accurate rock installation. Typically used on soft soils and narrow rock berms for longer stretches.
- Optional: Jet Flow Tool, mountable on Fallpipe ROV for flattening and trenching purposes. For more details reference is made to the Jet Flow Tool leaflet.
- Optional: Solid Ballast Unit, mountable on aft deck for solid ballasting of gravity based structures.



SIDE VIEW



TOP VIEW DECK LEVEL