

EQUIPMENT SHEET

SMITBARGE 2
PONTOONS CC



CONSTRUCTION/CLASSIFICATION

Year of construction	1985
Classification	LR ✱ 100A1 pontoon
IMO number	8 50 58 86
Call-sign	P H L X

ANCHOR WINCH

De-clutchable and lickable drum, without grooves, suitable for 610 m of 40 mm anchor wire. Hydraulically operated from diesel engine/ballast pump unit with two manually operated clutches in system.

HAND WINCH

10 t winch suitable for 47 m of 20 mm recovery wire attached to delta plate.

ANCHOR EQUIPMENT

2 stockless type, complete with crown shackle and each weighing 5,340 kg made by Byers.

MAIN DATA

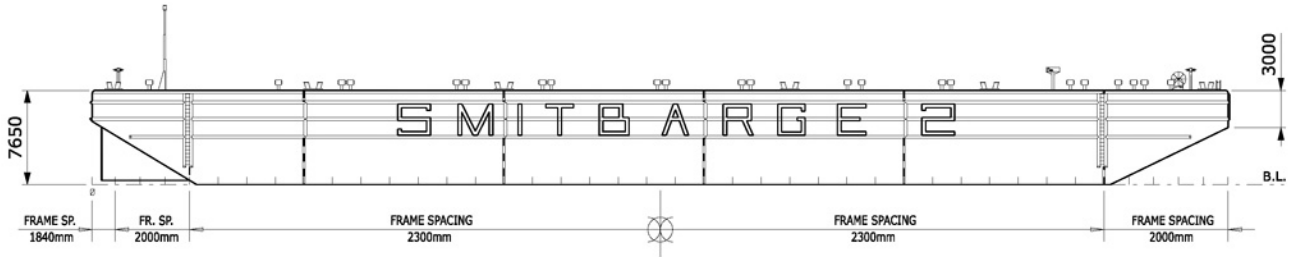
Gross tonnage	5,688
Nett tonnage	1,706
Principal dimensions	91.720 m x 30.755 m x 7.64 m
Draught empty	0.96 m
Draught loaded	6.163 m
Lightweight	2,262 t
Max. tonnage sea	13,980
Max. tonnage inland	N.A.
Max. deck load	15 t / m ²

MAIN TOWING BRIDLE

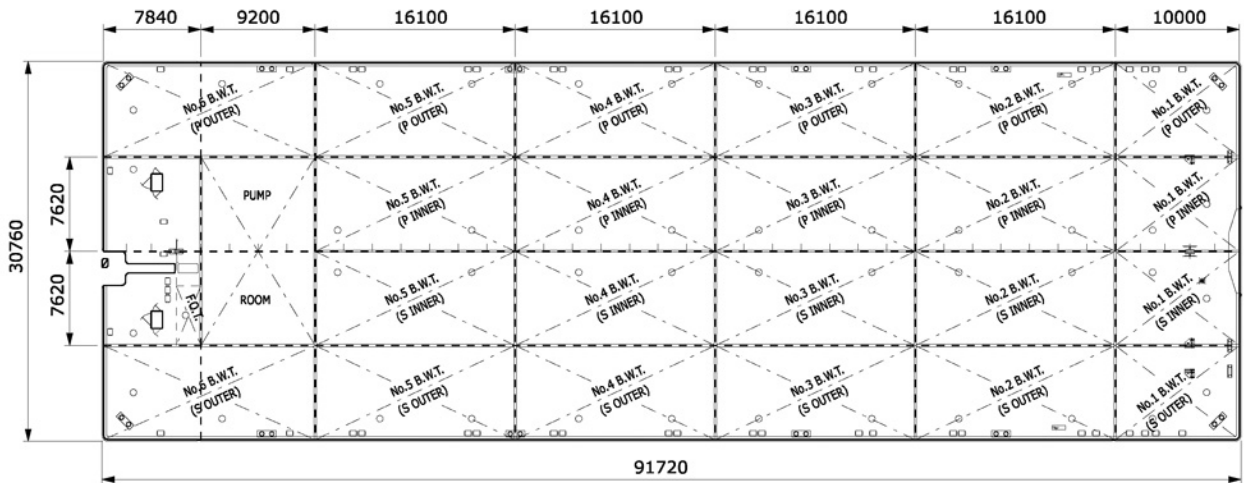
Two 23 m x 73 mm U3 stud link chain.
One delta plate.
One 6.0 m x 73 mm U3 link chain.
Three 75 ton Crosby shackles.

MACHINE INSTALLATION

Auxiliary pumping set (ballast/winch).
Engine: Desmi Ltd., type JW6WA, 6 cylinders, water cooled turbo-charged, rated at 70 bhp. when running at 1.500 r.p.m.
Pump: Type SA200-320/50, capacity 500 m³/hr.



SIDE VIEW



TOP VIEW DECK LEVEL