

EQUIPMENT SHEET

BLACK MARLIN

SEMI-SUBMERSIBLE HEAVY TRANSPORT VESSEL



CONSTRUCTION/CLASSIFICATION

Built by	China Shipbuilding Co Taiwan
Year of construction	1999
Classification	BV ⚓ HULL, ⚓ MACH, Special service Semi submersible heavy lift vessel, Unrestricted navigation. MON-SHAFT CLEANSHIP, INWATERSURVEY, LH-HG-S1
IMO number	9186326
Call sign	9HA4606
Port of registry	Valletta, Malta

MAIN DATA

Length overall	217.80 m
Breadth moulded/max	42.00 m
Depth	13.30 m
Draft submerged at FPP/APP	23.30/23.30 m
Summer draft	10.08 m
Deck space [l x w]	178.2 x 42.00 m
Deadweight	57,021 t
Trial speed	14.50 kn
Total installed power	12,640 kW
Main engines	1 x 12,640 kW
Main propulsion	1 x 12,640 kW C.P. propeller
Bow thruster	2,000 kW

NAVIGATION EQUIPMENT

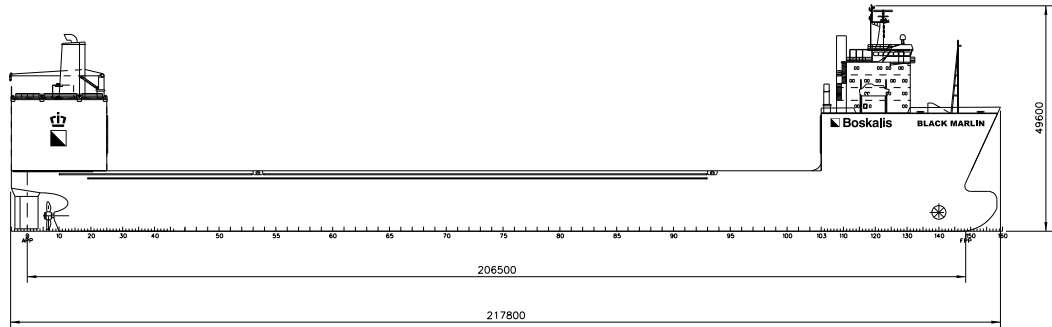
- Two radar, ARPA coupled
- GPS and SMIDS
- Echo sounders with fore and aft transducers
- Two gyro compasses
- ECDIS
- One doppler log
- SPOS - Ship Performance Optimisation System
- OCTOPUS - Octopus onboard system (ship motion monitoring and decision support system by Amarcn)

COMMUNICATIONS EQUIPMENT

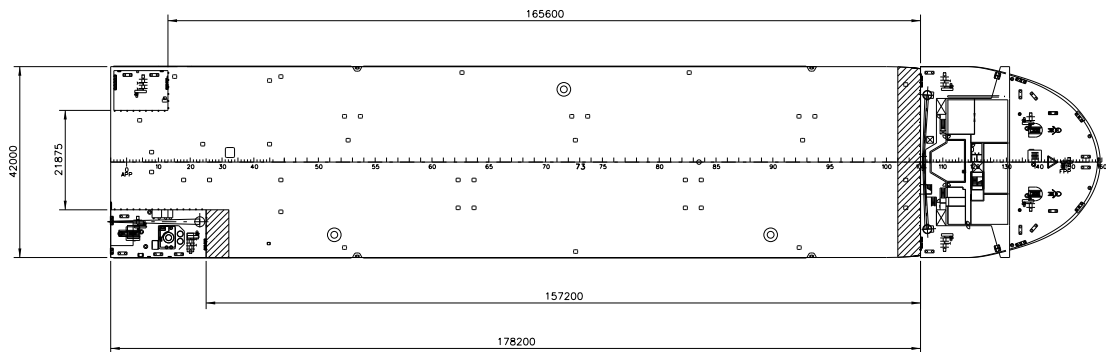
- Inmarsat B and C (telex/telephone/fax/data)
- VHF radio telephony
- Global wireless communication system
- Weather facsimile
- NAVTEX receiver
- GMDSS

BALLASTING

- Four main ballast pumps 3,300 m³/hr@ 35 m head
- One fire gen. service pump 90 m³/hr@ 80 m head or 240 m³/hr@ 20 m head
- One fire bilge pump 90 m³/hr@ 80 m head or 240 m³/hr@ 20 m head
- One emergency fire pump 72 m³/hr@ 80 m head
- One gen. service s.w. pump 50 m³/hr@ 40 m head
- Two ballast stripping pumps 125 m³/hr@ 28 m head



SIDE VIEW



TOP VIEW DECK LEVEL