

EQUIPMENT SHEET

SOUTHERN OCEAN
CONSTRUCTION SUPPORT VESSEL



CONSTRUCTION / CLASSIFICATION

Built by	Metalships & Docks, Vigo, Spain
Year of construction	2010
Classification	DNV + 1A1, DYNPOS-AUTR, EO, DK(+), CLEAN, CLEAN DESIGN, COMF-V(3), NAUT-OSV, HELDK.
Flag	Malta
Port of registry	Valletta

FEATURES

Accommodation	120 berths, 50 x single cabins and 35 x double cabins
Client & office facilities	1 x offline office on 01 ACC 1 x online office on 04 ACC 1 x conference room 1 x briefing room/cinema
Hospital	2 berths
Mess room	60 seats
Recreation room	50 seats
Conference room	12 seats
Reception room	Reception room for helideck
Recreation facilities	Gymnasium, sauna and cinema

CAPACITIES

Bunker capacity	Approx. 1,700 m ³
Other tanks for cargo	Potable water: approx. 600 m ³ Ballast water: approx. 7,400 m ³
Freshwater gen.	2 of each 25 m ³ per day

MAIN DATA

Length overall	136.6 m
Length BP	120.4 m
Beam	27.0 m
Draft max	6.85 m
Depth main deck	9.7 m
Deadweight	Approx. 10,000 t
Main deck area	Approx. 2,400 m ²
Deck strength over all	10 t/m ²
Deck hatches	Two 4 m x 3 m hatches

PROPULSION AND MAIN SYSTEM

Main engine (electric driven)	Wärtsilä, 4 x 3,360 kW
Propulsion	Kongsberg, two Azipull thrusters each 3,500 kW
Bow thruster	1 x RR swing up thruster 1,500 kW 2 x RR tunnel thrusters 1,500 kW each

ELECTRIC POWER GENERATION

Main generator	4 x 3,230 kW
Harbour generator	Caterpillar, 580 kW

DYNAMIC POSITIONING SYSTEM

DP System	DP2 - Kongsberg Maritime K-Pos 21
Class	DnV DYNPOS-AUTR, complies NMD class 2
Reference system	2 x Kongsberg HiPAP 500 2 x DGPS DPS-i series LTW Taut Wire Mk15 Fan Beam
ERN	(97, 96, 87, 22)

ROV SYSTEM

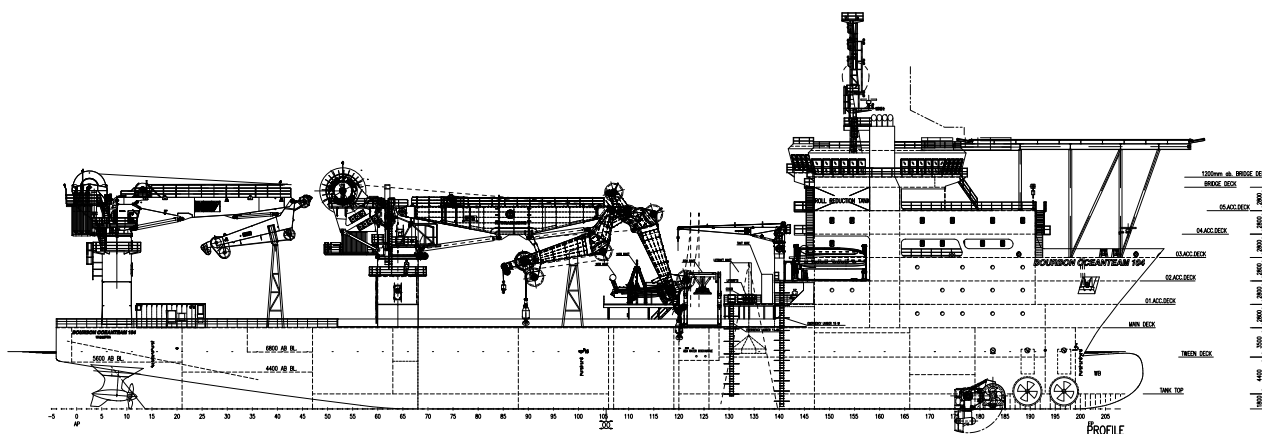
ROV (optional)	2 x WROV 150 BHP
----------------	------------------

DECK EQUIPMENT

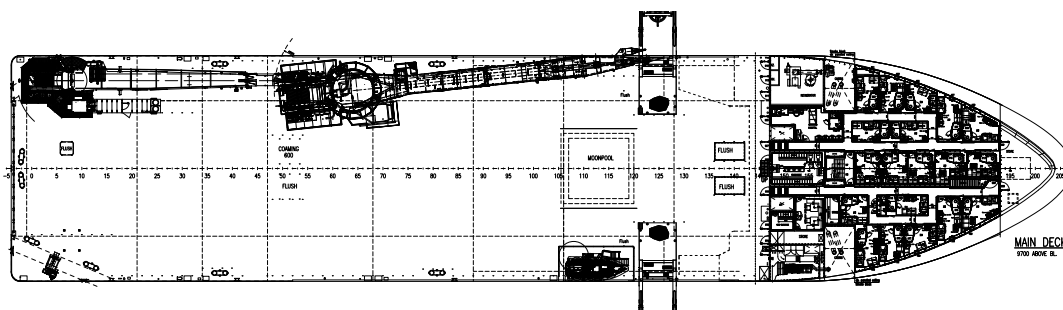
Main crane	MacGregor AHC Offshore Knuckle Jib Crane 250 t @ 10 m, 75 t @ 35 m 2,500 m wire
Auxiliary hoist	20 t @ 36 m
Aft. crane	NOV AHC Offshore Knuckle Jib Crane 1/2 Falls, 90/110 t @ 12 m 30/30 t @ 30 m, 2,000 m wire
Auxiliary hoist	10 t @ 30 m
Provision crane	SWL 5 t @ 12 m
Moonpool	7.2 m x 7.2 m with hatch
Mooring winch	2 x 10 t
Stabilising equipment	2 x passive roll reduction tanks 2 x anti heeling systems

HELIDECK

Size	D-Value 20.88 m (size 26.1 m) Suitable for Sikorsky S-92 (12.8 t)
------	--

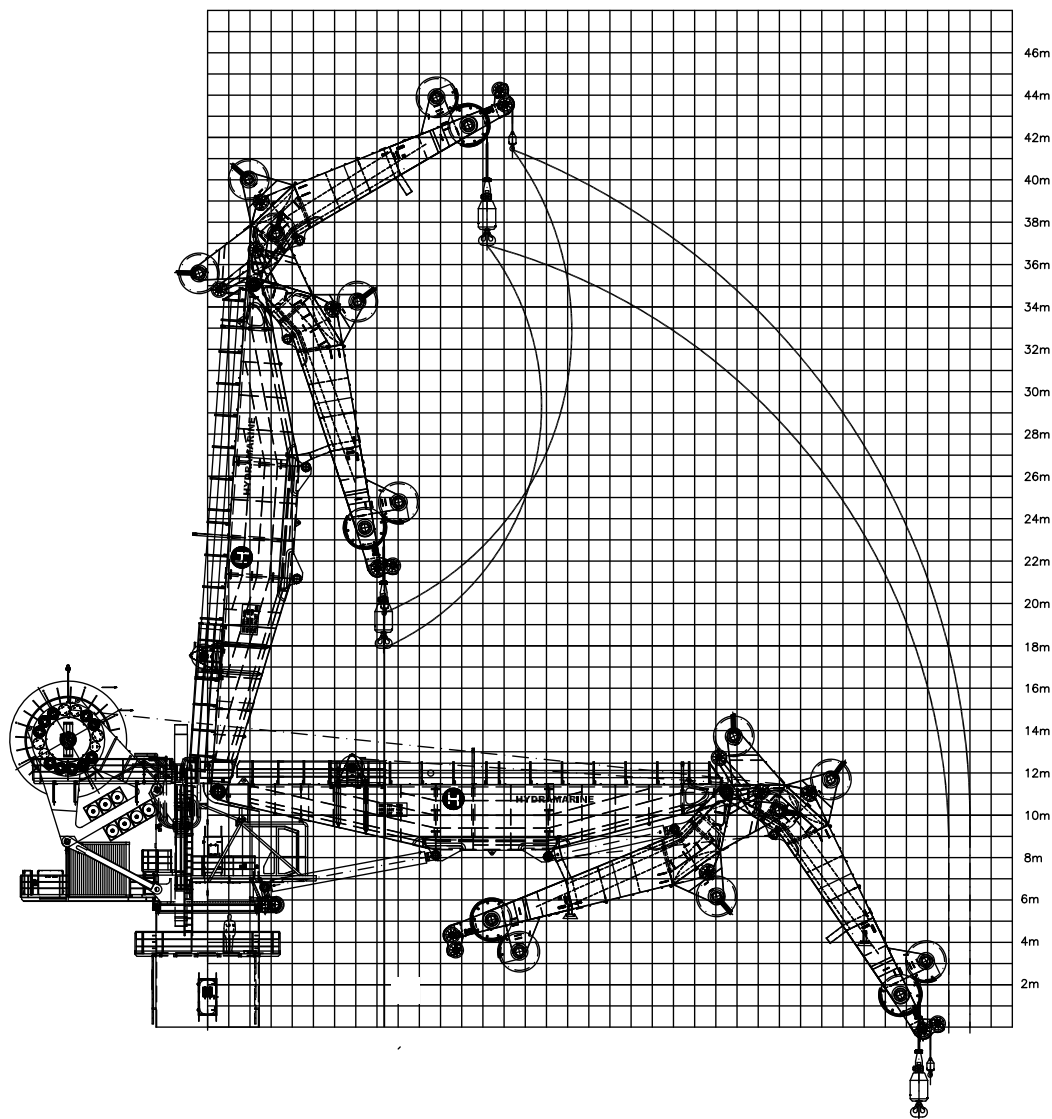


SIDE VIEW



TOP VIEW DECK LEVEL

250 T CRANE LOAD CHART



DP PLOTS

VARIABLE WIND AND WAVES
Limiting 1 minute mean wind speed in knots
at 10 m above sea level

