

EQUIPMENT SHEET

E 3004
PONTOONS CC/RORO

CONSTRUCTION/CLASSIFICATION

Year of construction	2001
Registration	Rotterdam
Classification	LR ✕ 100AN pontoon
IMO number	923 80 90

REMARKS

RoRo ramp connections

MAIN DATA

Gross / nett tonnage	1,420 / 426
Principal dimensions	67.00 m x 18.00 m x 4.53 m
Draught empty / loaded	0.72 m / 4.20 m
Lightweight	665 t
Max. tonnage sea / inland	3,300 / 4,200
Max. deck load	10 t / m ²

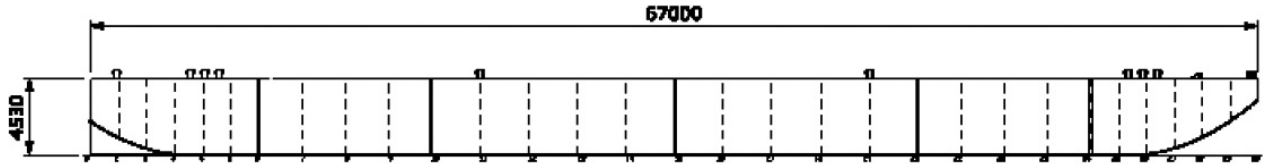
TONNAGE	DRAUGHT IN MM
---------	---------------

Empty	0,72
109,0	0,82
257,8	0,90
370,8	1,00
485,5	1,10
600,3	1,20
715,5	1,30
832,0	1,40
948,6	1,50
1065,3	1,60
1183,6	1,70
1301,9	1,80
1420,4	1,90
1539,2	2,00
1658,9	2.10

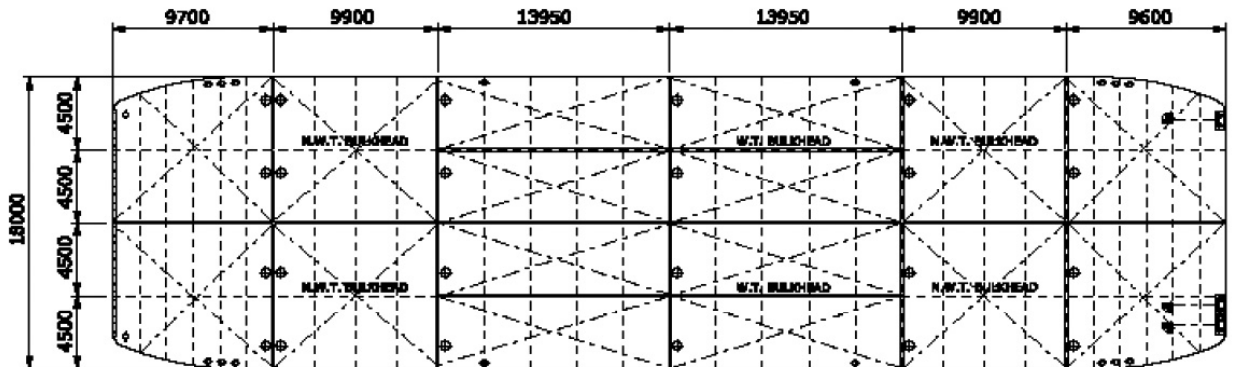


TONNAGE	DRAUGHT IN MM
---------	---------------

1778,7	2,20
1898,5	2,30
2018,7	2,40
2139,3	2,50
2259,9	2,60
2380,7	2,70
2501,5	2,80
2623	2,90
2744,4	3,00
2865,9	3,10
2987,5	3,20
3109,3	3,30
3231,2	3,40
3353,1	3,50
3475,0	3,60
3596,9	3,70
3718,9	3,80
3840,8	3,90
3962,7	4,00
4084,6	4,10
4200,0	4,20



SIDE VIEW



TOP VIEW DECK LEVEL