



CONSTRUCTION/CLASSIFICATION

Year of construction	2010
Classification	LR ✕ 100AN pontoon
IMO number	9595072

MAX PERMISSIBLE UNIFORM LOADING

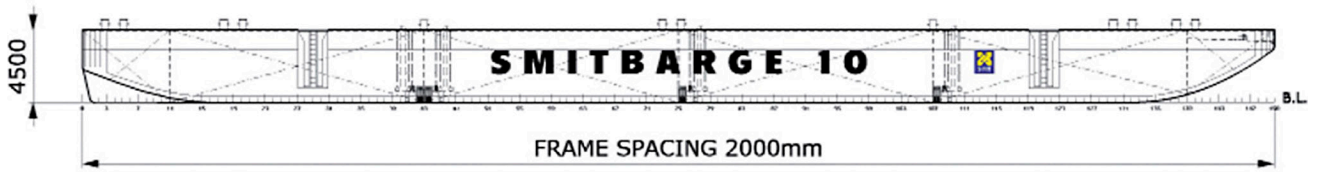
Main deck	15 t/m ²
C.L. bulkhead	80 t/m ²
6110 OCL bulkheads	100 t/m ²
Transverse bulkheads	200 t/m ²
Side shell	180 t/m ²
Web frames	23 t/m ²
Deck longitudinals	9 t/m ²

MAX PERMISSIBLE CONCENTRATED LOADING: (STATIC)

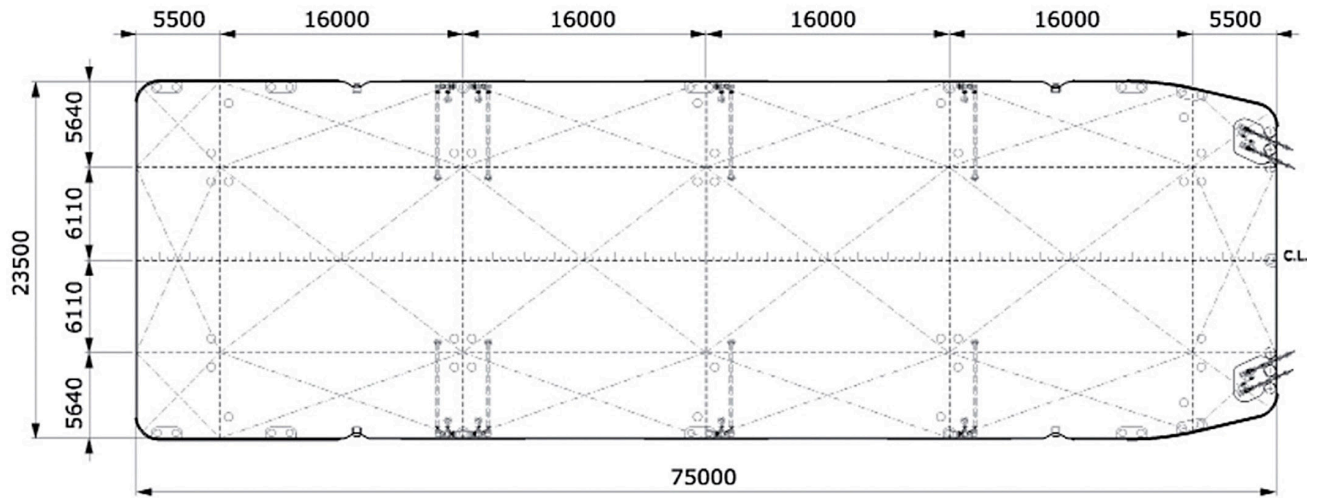
On request available

MAIN DATA

Gross tonnage	2,076 GT
Nett tonnage	622 t
Principal dimensions	75.00 m x 23.50 m x 4.50 m
Draught empty	0.73 m
Draught loaded	3.52 m
Lightweight	Approx 1,100 t
Max. tonnage sea	Approx 4,800 t
Max. deck load	15 t/m ²



SIDE VIEW



TOP VIEW DECK LEVEL