


**CONSTRUCTION / CLASSIFICATION**

Type of vessel	Work Pontoon
Call sign	DCPY
Classification	GL ✕ 100 A5 Pontoon K (20)
Flag	Federal Republic of Germany
Year of build	1976
Port of registry	Wilhelmshaven
Operation range	National Trade
Crew	2 Crew member

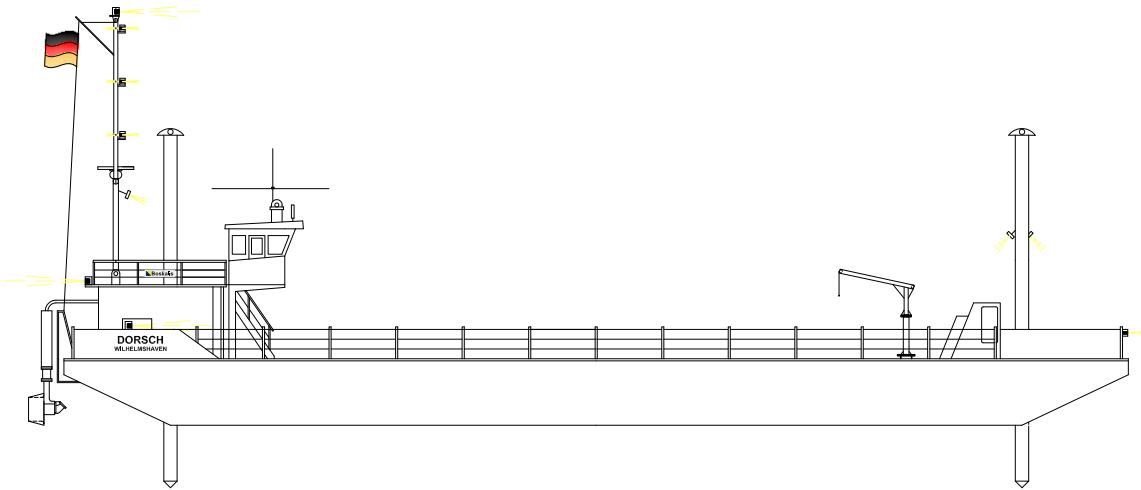
**MAIN DATA**

Gross tonnage	259 GT
Net tonnage	77 t
Length overall	42.17 m
Breadth	overall 10.00 m
Depth moulded	2.50 m
Unloaded draft min.	1.20 m
Loaded draft max.	1.72 m
Load capacity	(GL/SGB) 285 t deck cargo on summer freeboard unload 394 t (SUK) deck cargo on freeboard unload (incl. deck covering)

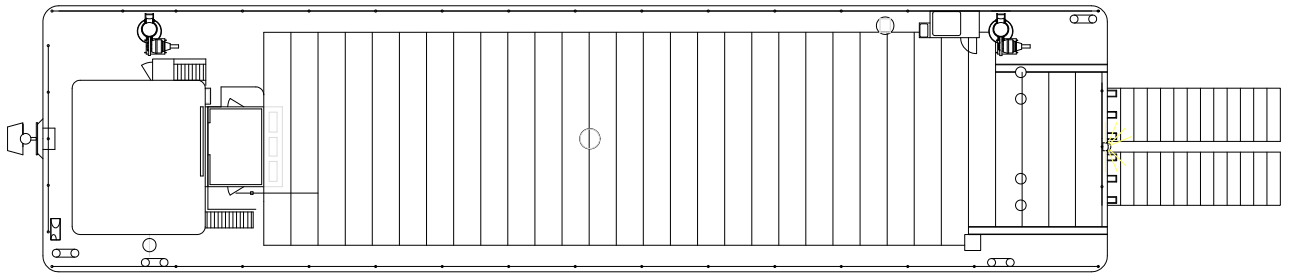
Engine power	397 kW
Main generator	
Generator power	35 kVA
Harbour genset	16 kVA

**EQUIPMENT**

Technical	1 x Bugjet Typ 800 W.P. Bos en Zn Steenwijk 2 x Anchor piles for 10 m water depth 2 loading ramps for approx. 50 t
Nautical	VHF marine radio, on-site mobile radio, radar, radio navigation, mobile telephone, autopilot



**SIDE VIEW**



**TOP VIEW DECK LEVEL**