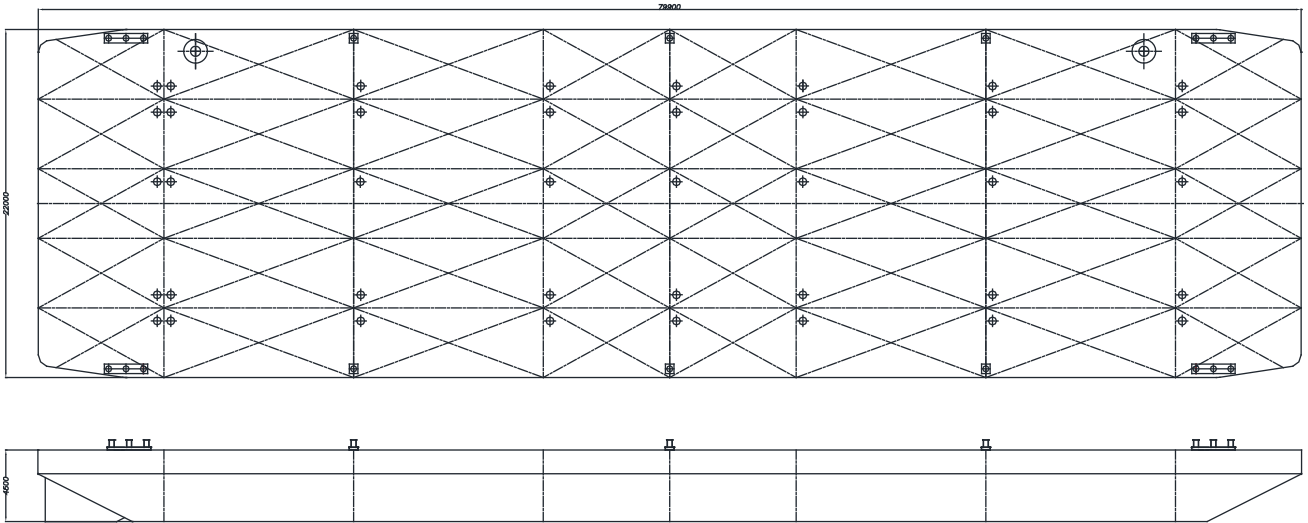


EQUIPMENT SHEET

BOKABARGE 91
FLAT TOP PONTOON



CONSTRUCTION / CLASSIFICATION

Classification BV | Unrestricted navigation

MAIN DATA

Gross tonnage	2,082 GT
Net tonnage	624 NT
Length overall	80.0 m
Beam	22.0 m
Depth	4.5 m
Cargo capacity	4,900 t
Freeboard min.	1.05 m
Draught max.(summer)	3.45 m
Draught empty	0.59 m
Deck load max.	12 t/m ²
Construction weight	901 t
Spud wells	Suitable for 2 spuds ø 914 mm