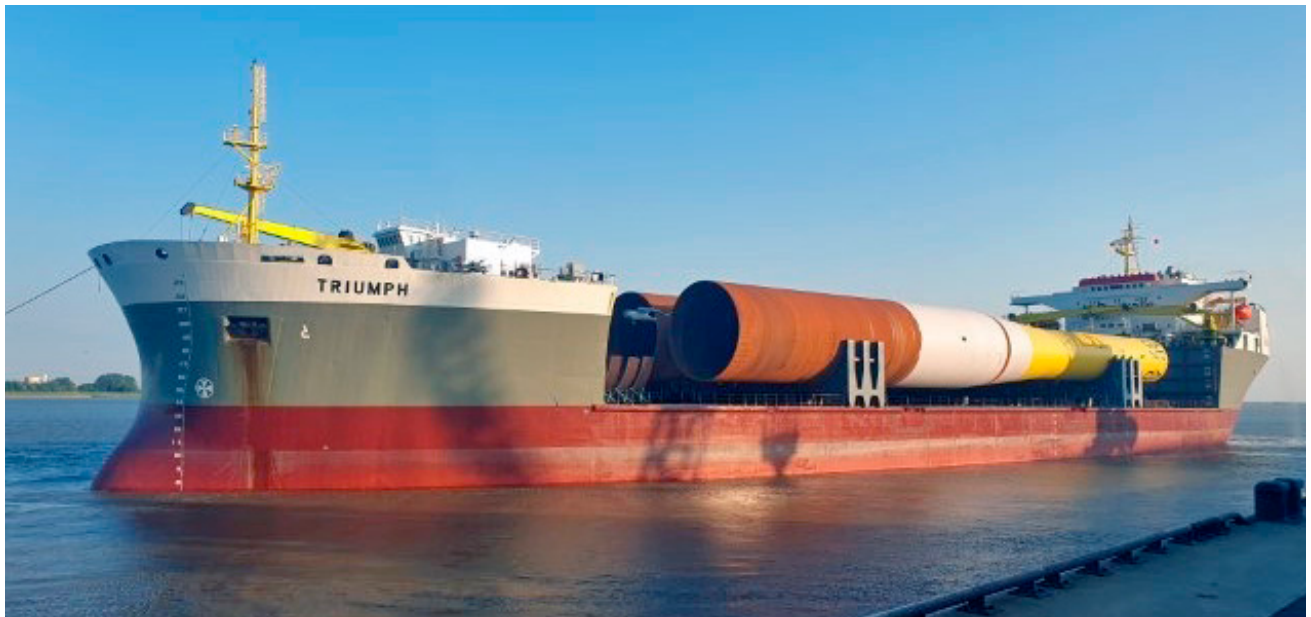


# EQUIPMENT SHEET

## TRIUMPH

SEMI-SUBMERSIBLE HEAVY TRANSPORT VESSEL



### CONSTRUCTION/CLASSIFICATION

Converted by	Cosco Nantong Shipyard, China
Year of conversion	2008
Classification	Bureau Veritas   ✕ HULL ✕ MACH, Special service, Semi submersible heavy lift vessel, Unrestricted navigation, ✕ AUT-UMS(SS), MON-SHAFT
IMO number	8902967
Flag	Malta
Port of registry	Valletta

### MAIN DATA

Length overall	216.79 m
Breadth moulded/max	44.50 m
Depth	14.00 m
Draft submerged at FPP/APP	23.00/23.00 m
Summer draft	10.44 m
Deck space [l x w]	130.00 x 44.50 m
Deadweight	54,000 t
Trial speed	15.00 kn
Total installed power	15,552 kW
Main engines	1 x 11,952 kW
Main propulsion	1 x 11,952 kW fixed propeller
Bow thruster	1 x 1,500 kW

### NAVIGATION EQUIPMENT

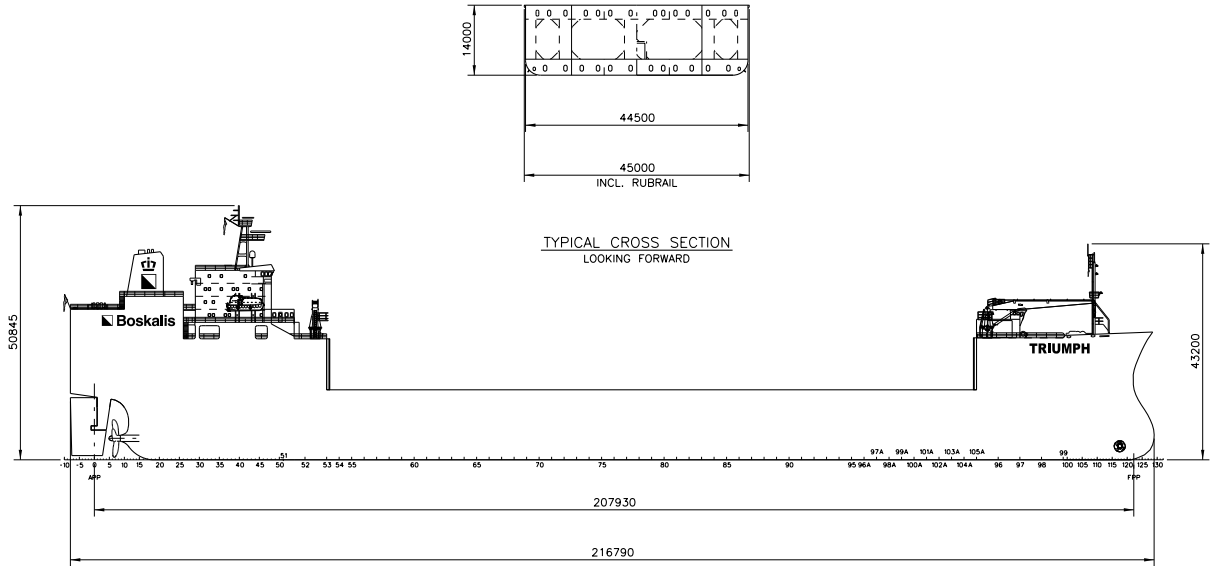
- Three radar, ARPA coupled
- GPS
- One gyro compass
- One echo sounder
- Bridges fore and aft
- SPOS - Ship Performance Optimisation System
- OCTOPUS - Octopus onboard system (ship motion monitoring and decision support system by Amarcn)

### COMMUNICATIONS EQUIPMENT

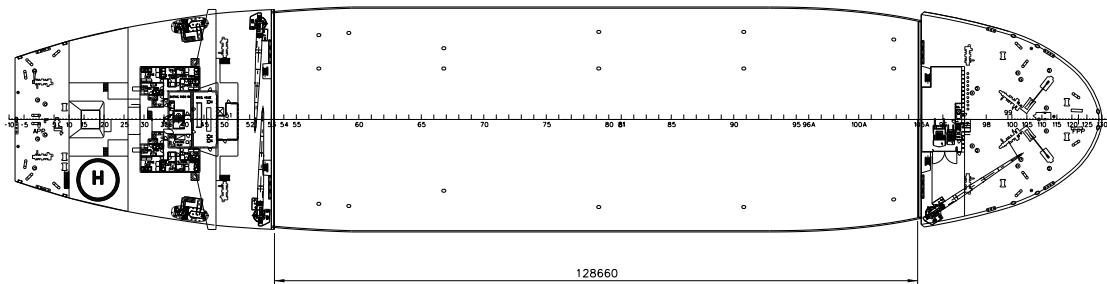
- Inmarsat B+C
- Fleet broadband
- VHF radiotelephony
- Weather facsimile
- Watch receiver plus printer
- NAVTEX receiver
- GMDSS
- Iridium satellite telephone

### BALLASTING

- Four main ballast pumps (steam driven) 2,500 m<sup>3</sup>/hr@ 30 m head
- One ballast pump (electric driven) 4,000 m<sup>3</sup>/hr@ 30 m head
- One stripping pump 500 m<sup>3</sup>/hr@ 140 m head
- One stripping ejector 300 m<sup>3</sup>/hr@ 20 m head
- Two drain tank pumps 300 m<sup>3</sup>/hr@ 50 m head
- One fire pump 110 m<sup>3</sup>/hr@ 80 m head
- One fire gen. service pump 110 m<sup>3</sup>/hr@ 80 m head
- One emergency fire pump 72 m<sup>3</sup>/hr@ 80 m head



## SIDE VIEW



## TOP VIEW DECK LEVEL