

EQUIPMENT SHEET

E 3505
PONTOONS CC/TA

CONSTRUCTION/CLASSIFICATION

Year of construction	2000
Registration	Rotterdam
Classification	LR [®] 100A4N pontoon
IMO number	9217943

REMARKS

Test arrangements



MAIN DATA

Gross / nett tonnage	1,599 / 479
Principal dimensions	66.00 m x 23.00 m x 4.00 m
Draught empty / loaded	0.75 m / 3.21 m
Lightweight	1,036 t
Max. tonnage sea / inland	3,400 / 3,606
Max. deck load	10 t / m ²

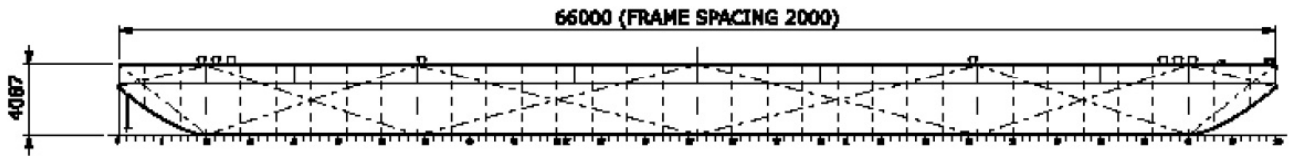
TONNAGE DRAUGHT IN MM

Empty	0,75
139,3	0,85
279,4	0,95
420,1	1,05
561,7	1,15
693,1	1,48
703,9	1,25
846,7	1,35
990,3	1,45

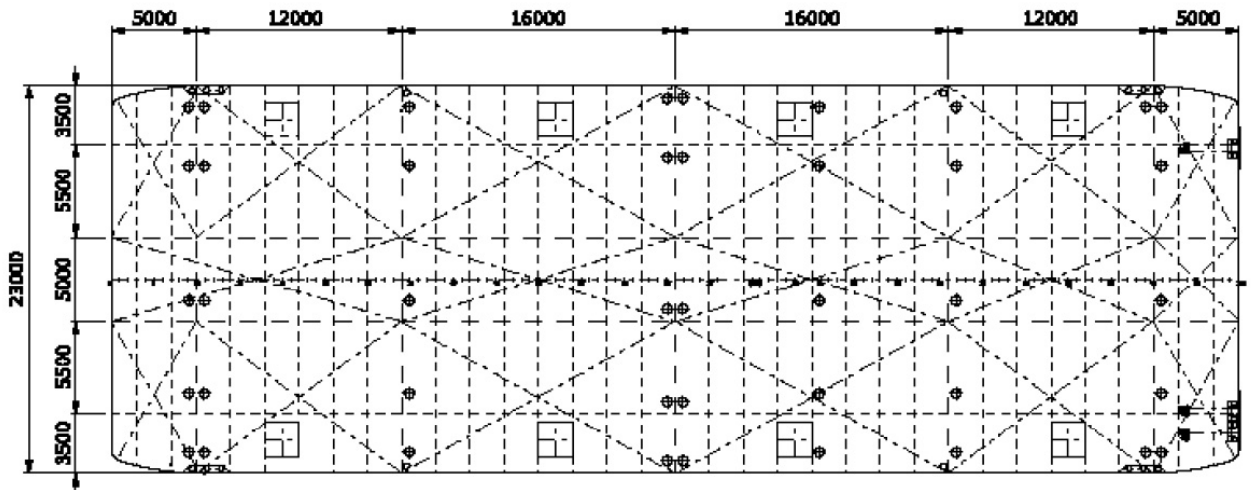
TONNAGE

DRAUGHT IN MM

1134,5	1,55
1279,3	1,65
1424,6	1,75
1570,7	1,85
1717,2	1,95
1864,3	2,05
2011,9	2,15
2160,1	2,25
2309,0	2,35
2458,3	2,45
2608,1	2,55
2758,4	2,65
2909,3	2,75
3060,6	2,85
3212,1	2,95
3361,6	3,05
3515,1	3,15
3606,0	3,21



SIDE VIEW



TOP VIEW DECK LEVEL