



## CONSTRUCTION / CLASSIFICATION

Year of construction	2008
Classification	LR ✕ 100AN pontoon
IMO number	9492531

## REMARKS

Barge can be submerged and is therefore equipped with an internal air piping system.  
 Deballasting by aircompressor which is compulsory.

## MAX PERMISSIBLE UNIFORM LOADING

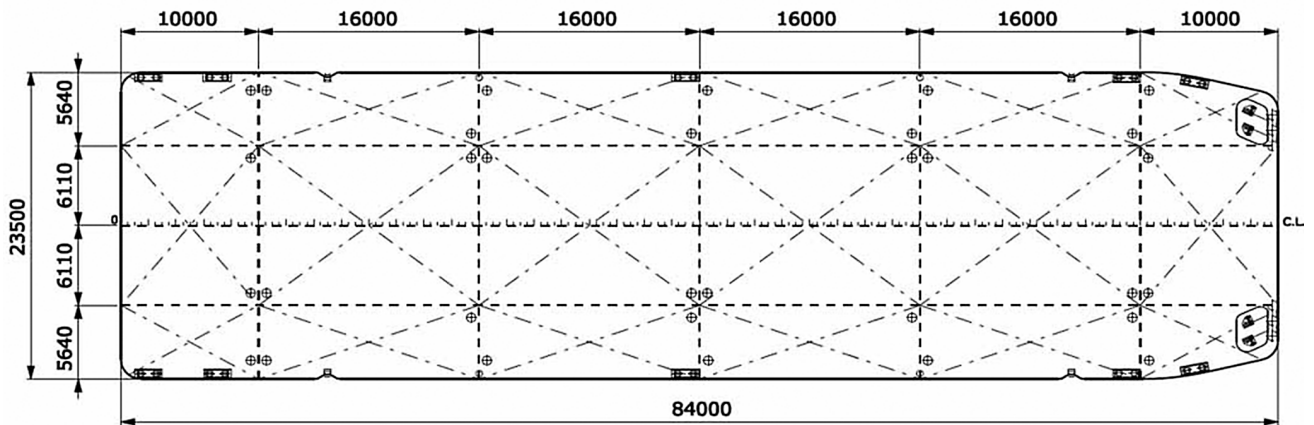
Main deck	15 t/m <sup>2</sup>
C.L. bulkhead	83 t/m <sup>2</sup>
6110 OCL bulkheads	108 t/m <sup>2</sup>
Transverse bulkheads	220 t/m <sup>2</sup>
Side frames	184 t/m <sup>2</sup>
Web frames	26.2 t/m <sup>2</sup>
Deck longitudinals	9.1 t/m <sup>2</sup>

## MAIN DATA

Gross tonnage	2,922 GT
Nett tonnage	876 t
Principal dimensions	84.00 m x 23.50 m x 5.50 m
Draught empty	0.90 m
Draught loaded	4.67 m
Lightweight	1,580 t
Max. tonnage sea	6,500 t
Max. tonnage inland	N.A.
Max. deck load	15 t/m <sup>2</sup>



**SIDE VIEW**



**TOP VIEW DECK LEVEL**