

# EQUIPMENT SHEET

**UNION WARRIOR**  
OFFSHORE VESSELS / ANCHOR HANDLING TUG (AHT)



## CONSTRUCTION/CLASSIFICATION

Year of construction	2009
Classification	Lloyd's Register of Shipping   ✕ 100 A1 Tug, ✕ LMC, UMS, FiFi-I
IMO number	9537513
Call sign	ORPI
Flag	Belgium
Port of Registry	Antwerp
Trading area	Worldwide / Unrestricted

## DECK EQUIPMENT

Fore winch	Hydraulic Double drum - 200 T. brake load Line pull 50 T. @ 10 m/min. on 1 <sup>st</sup> layer
Aft winch	Hydraulic, Waterfall (2 drums) - 200 T. brake load. Upper drum - Line pull 80 T. @ 6,25 m/min. on 1st layer. Lower drum - Line pull 105 T. @ 9,4 m/min on 1st lay
Stern roller	5.15m x 1.25m, 200 SWL
Tugger winch(es)	2 x 15 T.@ 15 m/min.
Towing pins	2 x Karmoy 300 T. SWL
Stopper pins	2 x Karmoy 160 T. SWL
Crane	2t s WI @ 12 m outreach

## MAIN DATA

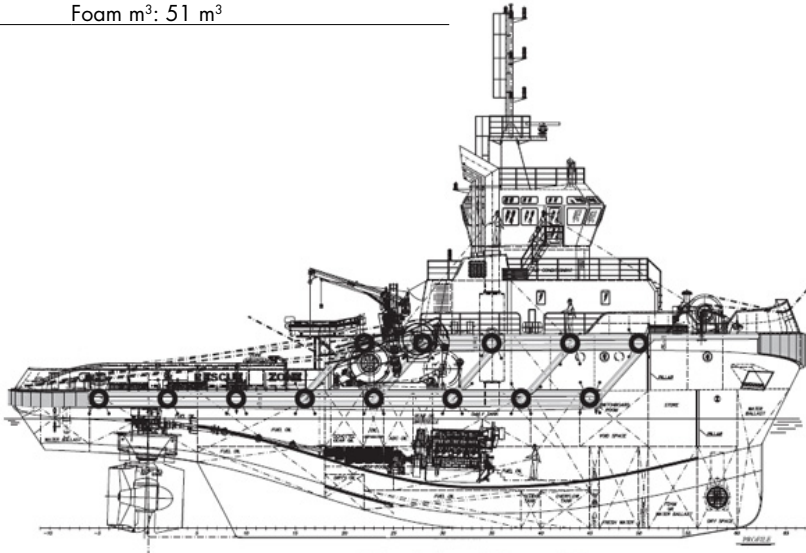
Gross tonnage	810 t
Length overall	40.65 m
Breadth moulded	12.70 m
Depth moulded	6.90 m
Max. draught	6.65 m
Design draught	5.50 m
Bollard pull ahead	90 t
Speed max	13 kn
Speed economic	10 kn
Max deck cargo	51 t m <sup>2</sup>
Deck area (aft)	125 m <sup>2</sup>

## PROPULSION AND MAIN SYSTEMS

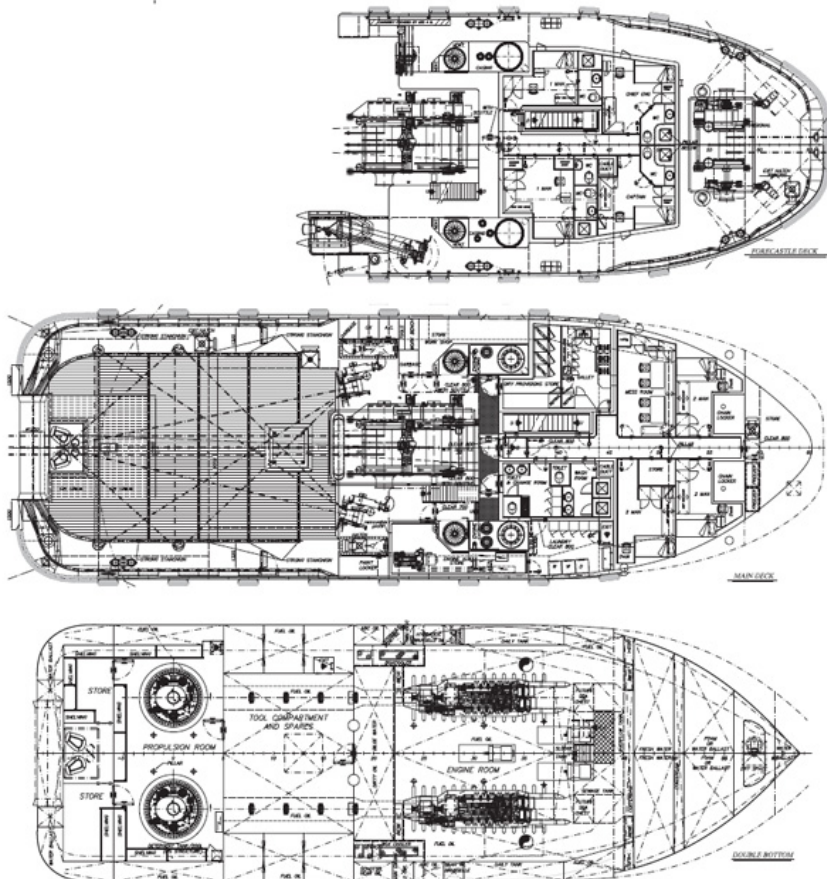
Main engines	2 x ABC 12VDC
Total power	5,200 kW
Propulsion	2 x fixed pitch ASD propeller
Bow thruster	1 x 300 kW
Fire fighting	2 x 1,200 m <sup>3</sup> / hr

**FEATURES**

Accommodation	10 berths, 4 x single and 3 x double cabins
Bunker capacity:	Fuel m <sup>3</sup> : 365 m <sup>3</sup> MGO Fresh water m <sup>3</sup> : 64 m <sup>3</sup> Foam m <sup>3</sup> : 51 m <sup>3</sup>



**SIDE VIEW**



**TOP VIEW DECK LEVEL**