



## CONSTRUCTION / CLASSIFICATION

Type of vessel	Cable Lay Pontoon
Call sign	DRFO
Classification	GL ✕ 100 A5 Pontoon
Flag	Federal Republic of Germany
Flag state authority	BG Verkehr (BmVI)
Place of build	Kristiansand
Year of build	1982
Port of registry	Wilhelmshaven
Operation area	Offshore

## MAIN DATA

Gross tonnage	1,992 GT
Net tonnage	597 NT
Length overall	81.60 m
Length b.p.p.	76.80 m
Beam moulded	22.00 m
Depth moulded	3.80 m
Draught max. approx.	2.47 m
Deadweight	2258.94 t
Fresh water tank capacity	193.00 m <sup>3</sup>
Fuel oil capacity	226.60 m <sup>3</sup> , except piping
Sewage treatment plant	Hamworthy ST 3A 4.66 m <sup>3</sup> /d

Refrigerator/freezer	2 x 20 TEU reefer
Forecastle height	3.00 m from deck
Additional space	463.80 m <sup>3</sup>

## MACHINERY

Member engine	Volvo D16-AMD WC Volvo D5AT AC
Harbour generator	Perkins 1006TAG2 AC

## WINCHES / ANCHORS

Main anchor winch	1 x Brissoneau & Lotz L,S=75 t (MBL=101 to)
Side anchor winch	25 t (MBL = 54 t)
Mooring system	4 Point
Main anchor wire	2,000 m, 38 mm
Side anchor wires	900 m, 28 mm
Anchors	Delta Flipper, 5 x 4 t, Mooreast/ STeveshark 4 x 5 t

## CRANE & LIFTING APPLIANCES

Board crane	Karm/knuckle boom 3/15.00 t; 4/30.00 t
Aux. crane	Fassi marine crane 1100RAFM.2.25 13.5 m - SWL 6.29 t

#### DECK AREA AND SERVICES

Clear deck space (unmobilised)	All 1,290 m <sup>2</sup> , main deck 931 m <sup>2</sup>
Max. deck load	Up to 10 t/m <sup>2</sup>
Deck strength	10 mm
Engine-/pumproom	Novec 1230

#### NAVIGATION, COMMUNICATION & SURVEY

R4 AIS system	AIS Furuno FA-150
GPS/DGPS pos. sensor	Sat.Nav. Furuno GP-90
Echo sounder	Furuno FE-700
EPIRB	Sailor SE-406 II
Radar transponder	2 x Sailor SART II
Navtex receiver	1 x Furuno NX – 700 B
Radio station	VHF DSC Radio Furuno FM-8800 S
Satellite communication	Sailor 900 VSAT Dual Antenna
GMDSS	3 GMDSS SIMRAD AXIS 50 m. t.
Network	Clavister UTM E7
Television	Tracvision KVH N5
Speed log	Furuno DS-80
Gyro compass	Anschütz Std 22

#### TECHNICAL STANDARDS AND REGULATIONS

Hulls/barges	DNVGL & German Flag
Operation & registration	Hamburg

#### THRUSTER (MANEUVERING ONLY)

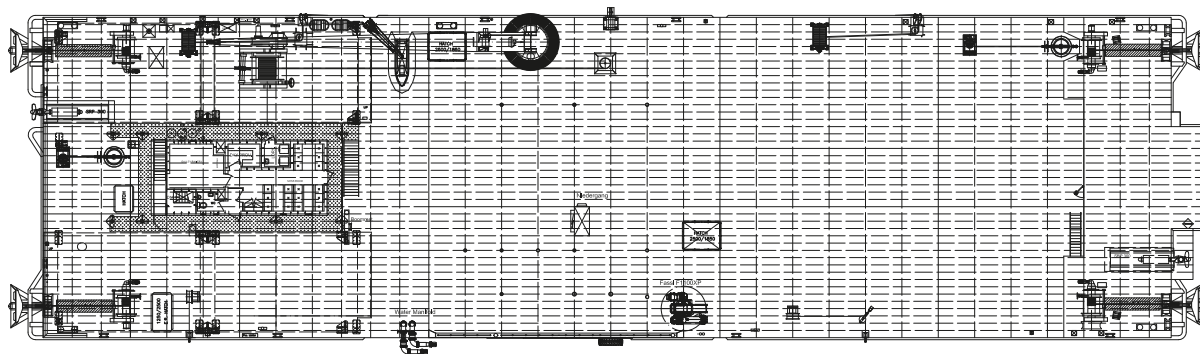
Type	2 x Volvo TAMD 165 A 2 x Schottel SRP300/500 DST
Technical data	410 kW each
Amount	2
Propeller diameter D	1,270 mm
Turning speed	1,800 rpm

#### ACCOMMODATION

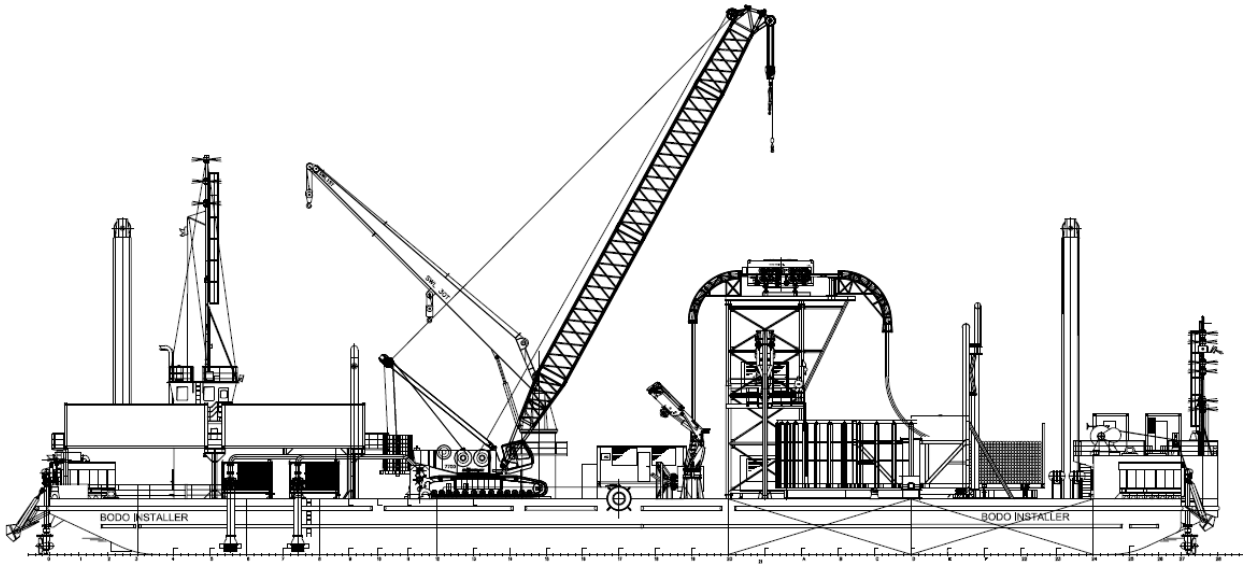
Total accommodation	4 (permanent)/20 (container)
Single cabins	4
Double cabins	Optional in container: 16 (32 beds/8 containers)
Control station	1 x Teu on deck
Gym	Yes
Enclosed rescue boat	1 x Zodiac RIBO 420 with Davit
Life rafts	4/72 Persons
Lifejackets/immersion suits	36

#### POWER CONNECTIONS

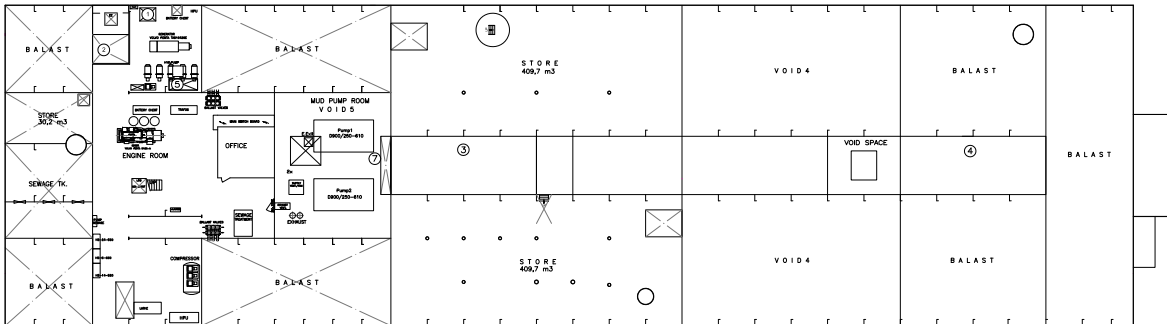
Deck power	1,253 kW
Total connections 60 Hz	6 x 230 V 4 x 440 V/16 A 4 x 440 V/32 A



#### TOP VIEW DECK LEVEL



**SIDE VIEW**



**TOP VIEW ENGINE LEVEL**