

CAPABILITY SHEET

DV VESSEL TRAFFIC MANAGEMENT VESSEL TRAFFIC AND ANCHOR MANAGEMENT MODULE

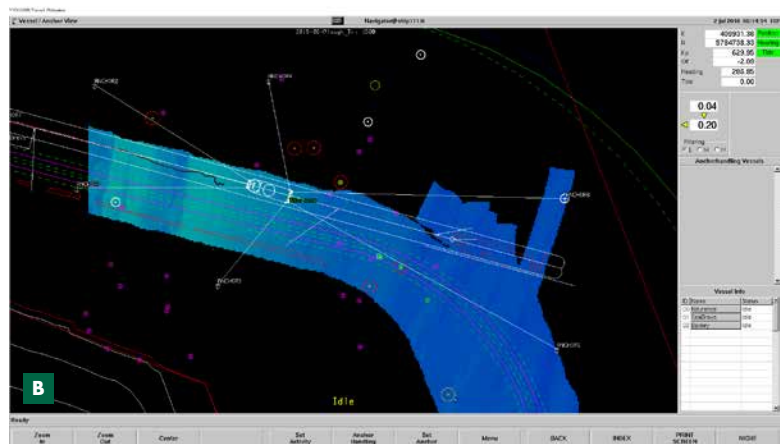
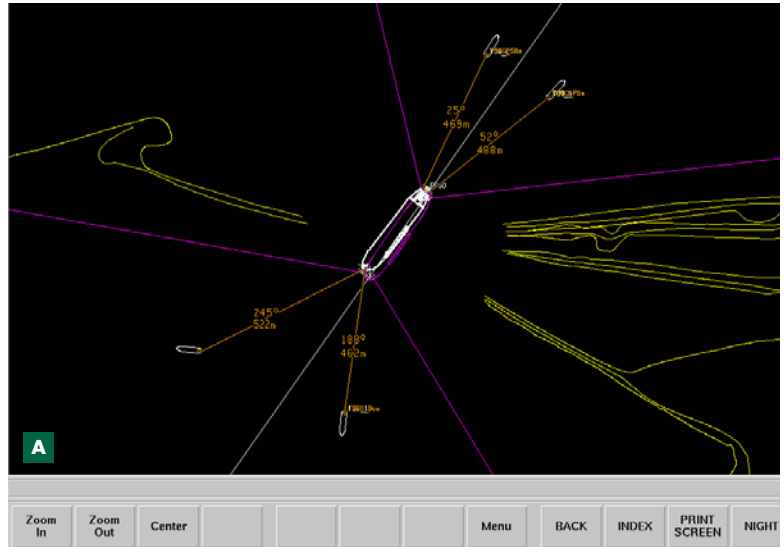
BUILD-IN VERIFICATION AND ACKNOWLEDGEMENT

DV Vessel Traffic Management module is used to manage vessel traffic, rig and FPSO station keeping, and anchor management. The module presents all vessels assigned to a project on a single real-time display. All vessels are displayed in relation to project-specific geographical information and optional depth information, including anchor or towing wires and anchors of multiple barges on each vessel on the project.

DV Vessel Traffic Management provides the tow master and barge masters and the captain of each vessel with a complete overview of the position and heading of all vessels in relation to their vessel. The overview includes the anchors and anchor wires active on the project and contributes to decision making on safe and smooth project execution.

DV Vessel Traffic Management acquires all data from the DV module in use on the vessel, and combines these data with data from the other vessels received by Single Telemetry link or WLAN cloud. The WLAN cloud can be used for file transfer and remote access to vessels. Vessels can be equipped with multiple sensors for redundancy. The tow master or barge master can assign tow wires or anchor movements to any of the anchor handling tugs at just a click of the mouse. The build-in verification and acknowledgement functions ensure clear communication without use of radio or mobile telephone, thus preventing misinterpretation of designated positions and anchor status.

DV Vessel Traffic Management incorporates logging functions for anchor and vessel position and records all movements and implemented so that recording is secured even in the unlikely event of radio link malfunction. The software features multiple (passive) shore-based repeater systems give project management and/or third parties a real time view of all project activities.



- A** DV Vessel Traffic Management Navigatin Display during station keeping of FPSO
- B** DV Vessel Traffic Management Anchor display
- C** Position keeping on the OSX3 FPSO tie-up project

Royal Boskalis Westminster N.V.
PO Box 43
3350 AA Papendrecht
The Netherlands
T +31 78 69 69 000
F +31 78 69 69 555
royal@boskalis.com
www.boskalis.com