

EQUIPMENT SHEET

KAMARA

DP II OFFSHORE VESSEL/ ANCHOR HANDLING TUG SUPPLY VESSEL (AHTS)/ ROV SUPPORT VESSEL



CONSTRUCTION / CLASSIFICATION

Year of construction	2005
Classification	ABS +A1(E), Offshore support vessel, anchor handling, towing vessel, +AMS, +ACCU, FiFi Class 1, +DPS-2, UWILD
IMO number	9322607
Call sign	9HA4953
Flag/Port of registry	Malta/Valletta
Trading area	Worldwide/unrestricted

TOWING / ANCHOR HANDLING

Anchor handling towing winch - Waterfall Brattvaag, loadcell, spooling device, controlled dynamic braking.

AH winch 2 drums	1 tow & 1 AH
Tow drum/brake holding/ Pull	1,000 x 58 mm / 225 t / 150 t 1 st layer - 0-6.8 m/min
Anchor handling drum/ brake holding/pull	1,000 x 58 mm / 225 t / 150 t 1 st layer - 0-6.8 m/min
Wildcats for rig chain	1 x 3 ¼" - 120 t pull
Storage reel	1,000 x 58 mm
Stern roller	5 m x 2.5 m, 300 t SWL
Towing pin	Karmoy
Chain/wire stoppers	Karmoy
Rig chain lockers	2 x 120 m ³ - 240 m ³
Smit bracket	1 x 125 t SWL, bow arrangement

MAIN DATA

Gross tonnage	2,666 GT
Length overall	70.90 m
Breadth moulded	16.00 m
Depth moulded	7.00 m
Max draught	5.70 m
Design draught	4.80
Speed	13.5 kn
Speed economic	11 kn
Bollard pull ahead	83 t
Deck area	450 m ² , 10 t/m ² @ AH area
Deck cargo	650 t
Project mezzanine deck	137 m ²

PROPULSION AND MAIN SYSTEM

Main engines	2 x 2,460 kW Wärtsilä 6R32
Propulsion	Twin screw Lips CPP in nozzles
Bow thruster	2 x 550 kW
Stern thruster	1 x 550 kW
Generator	2 x 540 kW and 1 x 150 kW
Shaft generator	2 x 1,200 kW

FEATURES

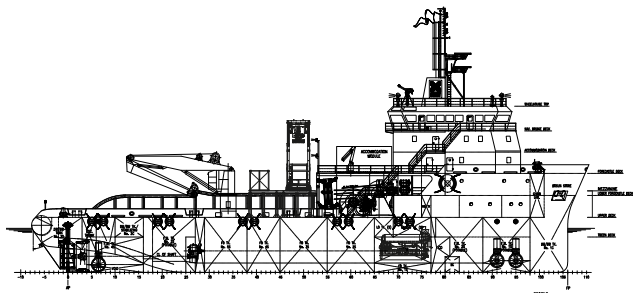
Cabins 63 berths: 9 x single berth, 21 x double cabins, 3 x cabins with 4 beds. Messroom, hospital, recreation room, office space, conference room, laundry room, dry provision store, freezer 9 m³, cooler 11 m³

DECK EQUIPMENT

Capstan (aft cargo deck)	2 x 10 t @ 60 m/min
Tugger winch (fwd cargo deck)	2 x 10 t @ 60 m/min
Marine crane	Knuckle boom 25 t @ 8 m/12.5 t @ 20 m
Crane	1.8 t SWL @ 9.0 m
Anchor/anchor chain	2 x HHP anchors/U2 type
A-frame (optional)	50 t SWL (not installed)
Windlass/mooring winch	Brattvaag BMG41044

NAVIGATIONAL EQUIPMENT

Radar	2 x ARPA 12 kW 96 nm
Gyro	3 x gyro compass 5 x gyro repeaters
VHF	2 x aft console, 1 x OCM desk, 1 x DP desk and 2 x front console
Autopilot, GPS, echo sounder, speedlog, Navtex 2 x Bridge Wing Repeaters	
MF/HF 250 W radiotelephone, MF/HF DSC watchreceiver, 2 x Inmarsat C EGC & TLX, 4 x VHF incl DSC, Navtex receiver, AIS	
Dynamic positioning +DPS 2 - Alstom (DGPS, 2 x HPR, Cysan, Tautwire)	



SIDE VIEW

KAMARA

DP II OFFSHORE VESSEL / ANCHOR HANDLING TUG SUPPLY VESSEL (AHTS) / ROV SUPPORT VESSEL

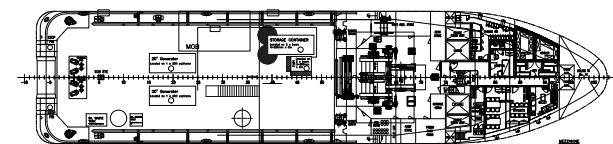
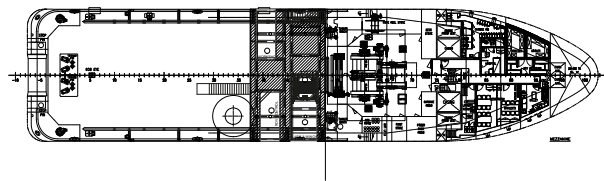
DISCHARGE CAPABILITIES TANK CAP. / DISCHARGE CAP.

Fuel oil	800 m ³ / 2 x 100 m ³ /hr @ 75 m head
Base/fuel oil	150 m ³ / 2 x 100 m ³ /hr @ 75 m head
Liquid mud (incl. tank cleaning system)	450 m ³ / 2 x 50 m ³ /hr @ 75 m head
Potable water	600 m ³ / 2 x 100 m ³ /hr @ 75 m head
Ballast	400 m ³ / 2 x 100 m ³ /hr @ 75 m head
Dry bluk (incl. dust collector)	- / 6 x 45 m ³
Bulk compressor	2 / 50 m ³ /min @ 5.6 bar
Foam	25 m ³

FIRE FIGHTING

Class 1 with waterspray. Monitor 2 x water/foam - remote control

Water	1,200 m ³ /hr
Foam	2 x 300 m ³ /hr
Range throw	120 m height 45 m
Pump capacity	2 x 1,500 m ³ /hr



TOP VIEW DECK LEVEL

Boskalis

PO Box 43
3350 AA Papendrecht
The Netherlands
T +31 78 69 69 000
offshore.energy@boskalis.com
www.boskalis.com/offshore