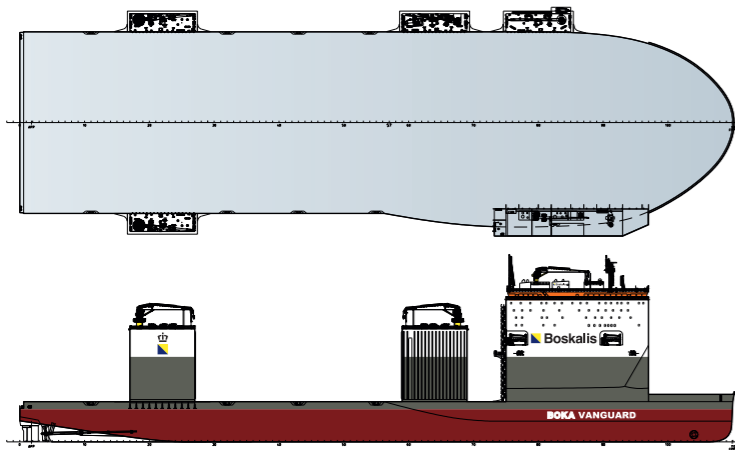


SEMI- SUBMERSIBLE HEAVY TRANSPORT VESSELS





VANGUARD

Length o.a.	275.00 m
Length b.p.	270.00 m
Breadth moulded	70.00 m
Deck space [L x B]*	275.00 x 70.00 m
Depth	15.50 m
Draft submerged at fpp / app	31.50 / 31.50 m
Summer draft (B-100)	10.94 m
Water-depth above main deck forward/aft	16.00 m
Deadweight	116,175 mt
Trial speed	14.5 knots

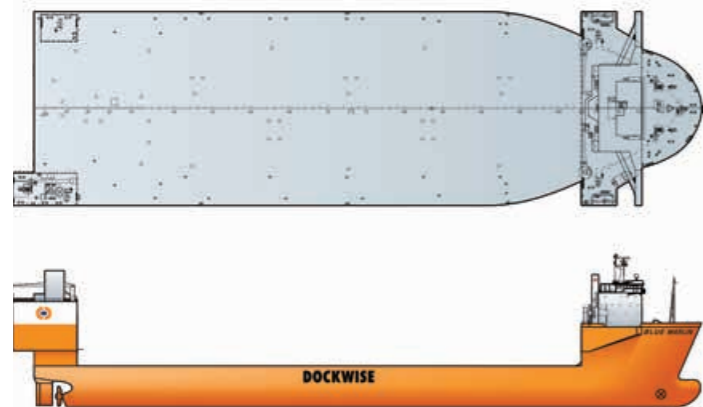
* Equipped with four movable casings



BLACK MARLIN

Length o.a.	217.80 m
Length b.p.	206.57 m
Breadth moulded	42.00 m
Deck space [L x B]*	165.60 x 42.00 m
Depth	13.30 m
Draft submerged at fpp / app	23.30 / 23.30 m
Summer draft	10.08 m
Water-depth above main deck forward/aft	10.00 / 10.00 m
Deadweight	57,021 mt
Trial speed	14.5 knots

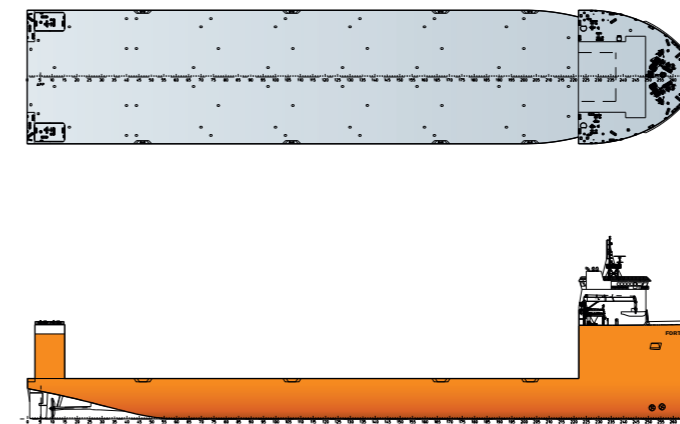
* Equipped with one movable casing at portside



BLUE MARLIN

Length o.a.	224.80 m
Length b.p.	206.64 m
Breadth moulded	63.00 m
Deck space [L x B]*	178.20 x 63.00 m
Depth	13.30 m
Draft submerged at fpp / app	24.72 / 28.40 m
Summer draft	10.24 m
Water-depth above main deck forward/aft	12.00 / 14.91 m
Deadweight	76,292 mt
Trial speed	13.0 knots

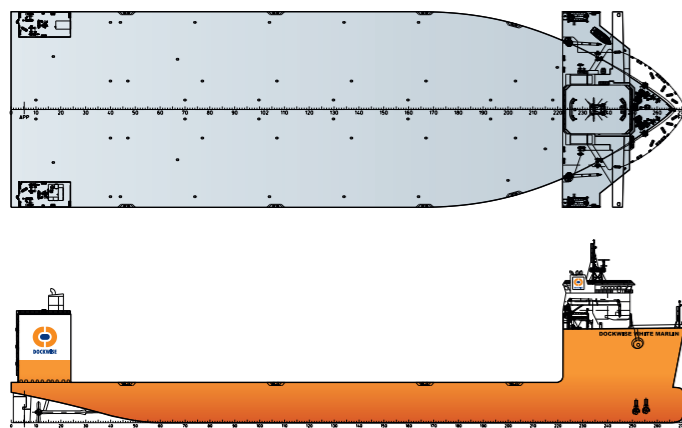
* Equipped with one movable casing at portside



FORTE

Length o.a.	216.75 m
Length b.p.	212.00 m
Breadth moulded	43.00 m
Deck space [L x B]*	177.60 x 43.00 m
Depth	13.00 m
Draft submerged at fpp / app	26.00 / 26.00 m
Summer draft	9.68 m
Water-depth above main deck forward/aft	13.00 / 13.00 m
Deadweight	50,000 mt
Trial speed	14.0 knots

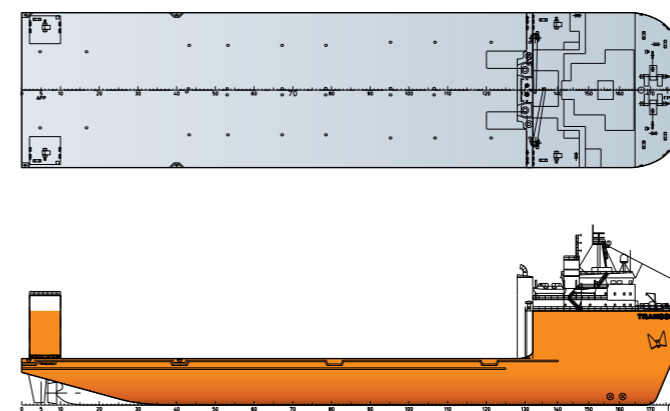
* Equipped with movable casings



WHITE MARLIN

Length o.a.	216.70 m
Length b.p.	212.13 m
Breadth moulded	63.00 m
Deck space [L x B]*	177.60 x 63.00 m
Depth	13.00 m
Draft submerged at fpp / app	26.00 / 26.00 m
Summer draft (B-100)	10.00 m
Water-depth above main deck forward/aft	13.00 / 13.00 m
Deadweight	72,146 mt
Trial speed	14.5 knots

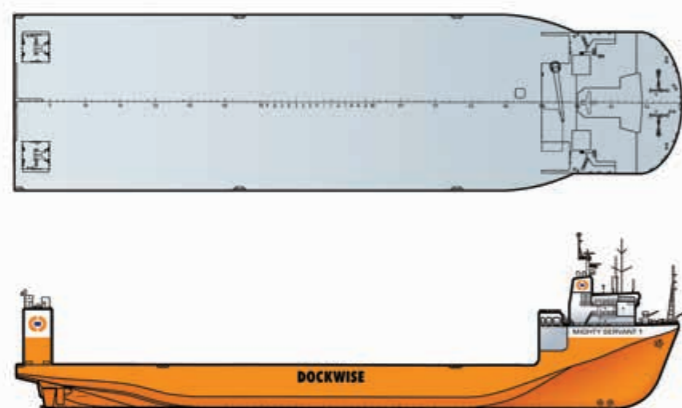
* Equipped with one movable casing at portside



TRANSSELF

Length o.a.	173.00 m
Length b.p.	162.00 m
Breadth moulded	40.00 m
Deck space [L x B]*	132.00 x 40.00 m
Depth	12.00 m
Draft submerged at fpp / app	22.00 m
Summer draft	8.80 m
Water-depth above main deck forward/aft	10.00 m
Deadweight	34,030 mt
Trial speed	15.5 knots

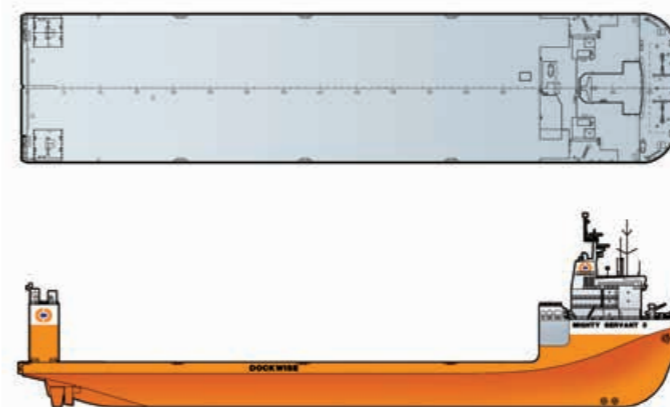
* Equipped with movable casings



MIGHTY SERVANT 1

Length o.a.	190.03 m
Length b.p.	174.70 m
Breadth moulded	50.00 m
Deck space [L x B]*	150.00 x 50.00 m
Depth	12.00 m
Draft submerged at fpp / app	21.38 / 26.00 m
Summer draft	8.77 m
Water-depth above main deck forward/aft	10.30 / 14.00 m
Deadweight	40,910 mt
Trial speed	13.0 knots

* Equipped with movable casings

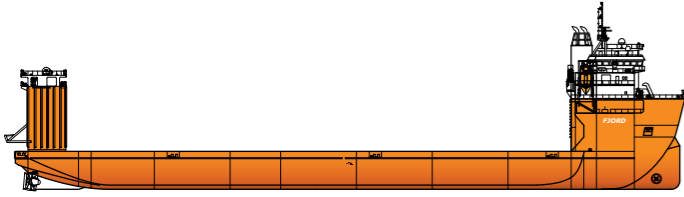
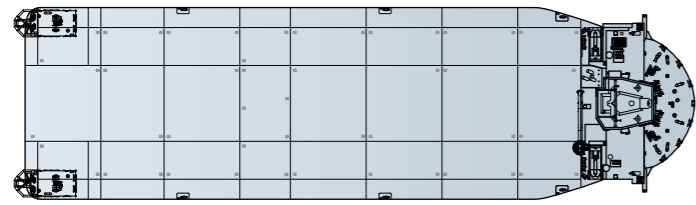


MIGHTY SERVANT 3

Length o.a.	181.23 m
Length b.p.	165.70 m
Breadth moulded	40.00 m
Deck space [L x B]*	140.00 x 40.00 m
Depth	12.00 m
Draft submerged at fpp / app	22.00 m
Summer draft (B-100)	9.48 m
Water-depth above main deck forward/aft	10.00 m
Deadweight	27,720 mt
Trial speed	15.0 knots

* Equipped with movable casings

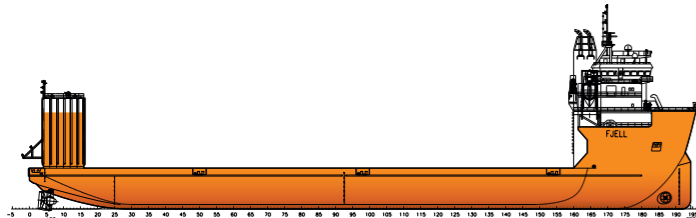
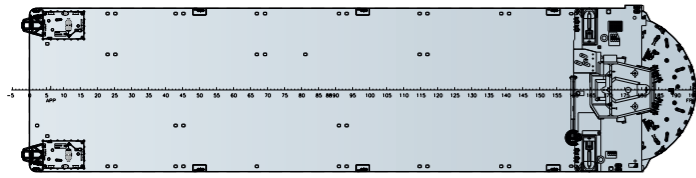




FJORD

Length o.a.	159.24 m
Length b.p.	153.07 m
Breadth moulded	45.50 m
Deck space [L x B]*	131.80 x 45.50 m
Depth	9.00 m
Draft submerged at fpp / app	19.00 m
Summer draft	6.09 m
Water-depth above main deck forward/aft	10.00 m
Deadweight	24,500 mt
Trial speed	10.5 knots

* Equipped with movable casings



FJELL

Length o.a.	147.24 m
Length b.p.	141.09 m
Breadth moulded	36.00 m
Deck space [L x B]*	119.80 x 36.00 m
Depth	9.00 m
Draft submerged at fpp / app	19.00 m
Summer draft	6.42 m
Water-depth above main deck forward/aft	10.00 m
Deadweight	19,300 mt
Trial speed	10.5 knots

* Equipped with movable casings



TRANSPORTER / TARGET / TREASURE / TALISMAN / TRUSTEE / TRIUMPH

Length o.a.	216.79 m
Length b.p.	208.00 m
Breadth moulded	44.50 m
Deck space [L x B]*	130.00 x 44.50 m
Depth	14.00 m
Draft submerged at fpp / app	23.00 / 23.00 m
Summer draft	10.44 m
Water-depth above main deck forward/aft	9.00 / 9.00 m
Deadweight	54,000 mt
Trial speed	15.0 knots



SWAN / SWIFT / TEAL

Length o.a.	180.96 m
Length b.p.	170.95 m
Breadth moulded	32.26 m
Deck space [L x B]*	126.60 x 31.66 m
Depth	13.30 m
Draft submerged at fpp / app	19.64 / 21.65 m
Summer draft	9.74 m
Water-depth above main deck forward/aft	6.50 / 8.00 m
Deadweight	30,000 mt
Trial speed	15.5 knots

DEFINITIONS

o.a.	Overall
b.p.	Between perpendiculars
fpp	Forward perpendiculars
app	Aft perpendiculars

All speeds are subject to cargo dimensions and weather conditions.

All our vessels are classed with IACS classification societies.

These vessel particulars are not to be used for engineering purposes for cargo transport.

The information contained in this brochure is for guidance purposes only and may be subject to changes.

Boskalis

Rosmolenweg 20

PO Box 43

3350 AA Papendrecht

The Netherlands

T +31 78 6969000

E offshore.energy@boskalis.com

www.boskalis.com/offshore

