

EQUIPMENT SHEET

BOKA SOUTHERN OCEAN
CONSTRUCTION SUPPORT VESSEL



CONSTRUCTION / CLASSIFICATION

Built by	Metalships & Docks, Vigo, Spain
Year of construction	2010
Classification	BV ✕ HULL ✕ MACH, Special service - Construction Support vessel SP120, Unrestricted navigation COMF-VIB 3, ✕ AUT-UMS, ✕ SYS-NEQ-OSV, CLEANSHIP, ✕ HEL, ✕ DYNAPOS AM/AT R
Flag	Malta
Port of registry	Valetta

FEATURES

Accommodation	120 berths, 50 x single cabins and 35 x double cabins
Client & office facilities	1 x offline office on 01 ACC 1 x online office on 04 ACC 1 x conference room 1 x briefing room/cinema
Hospital	2 berths
Mess room	60 seats
Recreation room	50 seats
Conference room	10 seats
Reception room	Reception room for helideck
Recreation facilities	Gymnasium, sauna and cinema

CAPACITIES

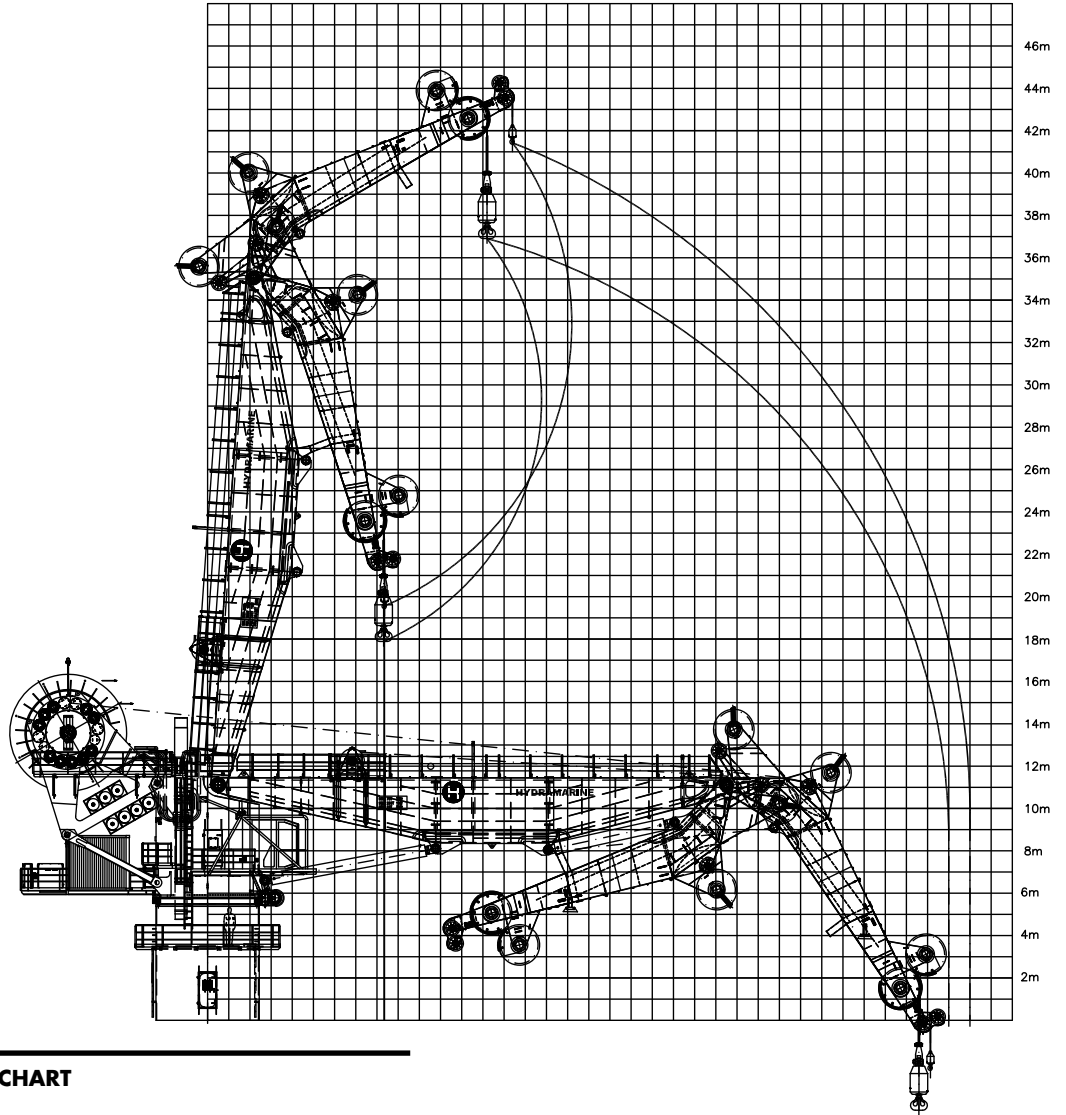
Bunker capacity	Approx. 1,500 m ³
Other tanks for cargo	Potable water: approx. 390 m ³ Ballast water: approx. 7,600 m ³
Freshwater gen.	1 x Aquamar AQ-25/2, capacity 10-12 m ³ /day, 1 x Hatenoer RO, capacity 24 m ³ /day

MAIN DATA

Length overall	133.6 / 136.6 m with helideck
Length BP	120.4 m
Beam	27.0 m
Draft max	6.85 m
Depth main deck	9.7 m (2,360 m ²)
Deadweight	Approx. 10,000 t
Main deck area	Approx. 2,360 m ²
Deck strength over all	10 t/m ²
Deck hatches	Two 4 m x 3 m hatches

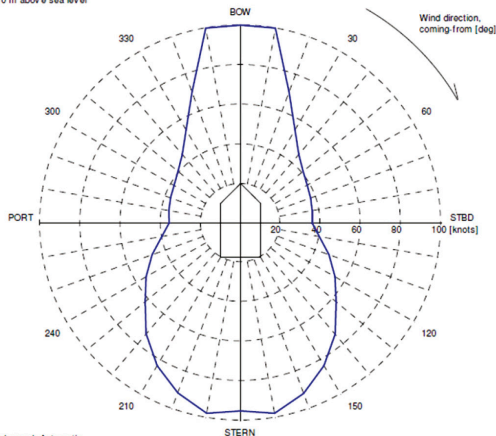
PROPULSION AND MAIN SYSTEM

Main engine	Wärtsilä, 4x 3,360 kW (electric driven)
Propulsion	2x Azipull thrusters, RR Ulstein Aquamaster, each 3,500 kW
Bow thruster	1 x RR swing up thruster 1,500 kW 2x RR tunnel thrusters 1,500 kW each



250 T CRANE LOAD CHART

VARIABLE WIND AND WAVES
Limiting 1 minute mean wind speed in knots
at 10 m above sea level



Wind speed: Automatic
Significant wave height: IMCA (North Sea)
Mean zero up-crossing period: IMCA (North Sea)
Rotating tidal current: 1.00 knots
Rotating wind induced current: 0.000/Uw knots

Boskalis
PO Box 43
3350 AA Papendrecht
The Netherlands
T +31 78 69 69 000
offshore.energy@boskalis.com
www.boskalis.com/offshore