

EQUIPMENT SHEET

BOKA OCEAN
CABLE LAY VESSEL



CONSTRUCTION / CLASSIFICATION

Built by	Metalships & Docks, Vigo, Spain
Year of construction	2009
Classification	I✕HULL✕MACH Special service - Construction Support vessel SP 120, Unrestricted navigation, ✕ AUTUMS, ✕ SYS-NEQ-OSV, CLEANSHIP, HEL, ✕ DYNAPOS AM/AT R
Flag	Bahamas
Port of registry	Nassau

FEATURES

Accommodation	118 berths, 24x single cabins and 47x double cabins
Client & office facilities	3 x office on 01 ACC 1 x online survey office on 04 ACC 1 x conference room on 02 ACC 1 x client office on 02 ACC
1 x briefing room/cinema on 01 ACC	1 berth
Mess room	60 seats
Recreation room	50 seats
Conference room	12 seats
Reception room	Reception room for helideck
Recreation facilities	Gymnasium, sauna and cinema

CAPACITIES

Bunker capacity	2109.6 m ³
Other tanks for cargo	Potable water: 1,387.7 m ³ Ballast water: 6,348.5 m ³
Freshwater gen.	2 of each 24 m ³ per day

MAIN DATA

Length overall	123.75 m.
and with cable chute	145.95 m
Length BP	120.4 m
Beam	27.0 m at waterline
Max breath	31.59 m at bridge wings
Draft max	6.85 m
Depth main deck	9.7 m
Deadweight	9,867 t
Main deck area	Approx. 2,400 m ²
Deck strength over all	10 t/m ²
Deck hatches	One 1.6 m x 1.8 m

PROPULSION AND MAIN SYSTEM

Propulsion	2x Azimuth thrusters each 3,500 kW
Bow thruster	1 x RR swing up thruster 1,500 kW 2x RR tunnel thrusters 1,500 kW each

ELECTRIC POWER GENERATION

Main generator	4 x 3,230 kW
Harbour generator	Stamford 595 kW

DYNAMIC POSITIONING SYSTEM

DP System	DP2 - Kongsberg K-Pos 21
Class	DYNAPOS AM/AT R DPS class 2
Reference system	2 x Kongsberg HiPAP 501 System (HiPAP) 4 x DGPS 1 x Fanbeam
ERN	(99, 99, 98)

MCLS - MODULAR CABLE LAY SYSTEM

Turntable capacity	> 3,500 tons
Main deck tensioner	15 ton tracked IHC
Loadarm tensioner	3 ton tracked TMS
Quadrant handling	25 tons
CPS handling	3 manipulator arms
CPS storage	Equal to 20x 20' ISO container

DECK EQUIPMENT

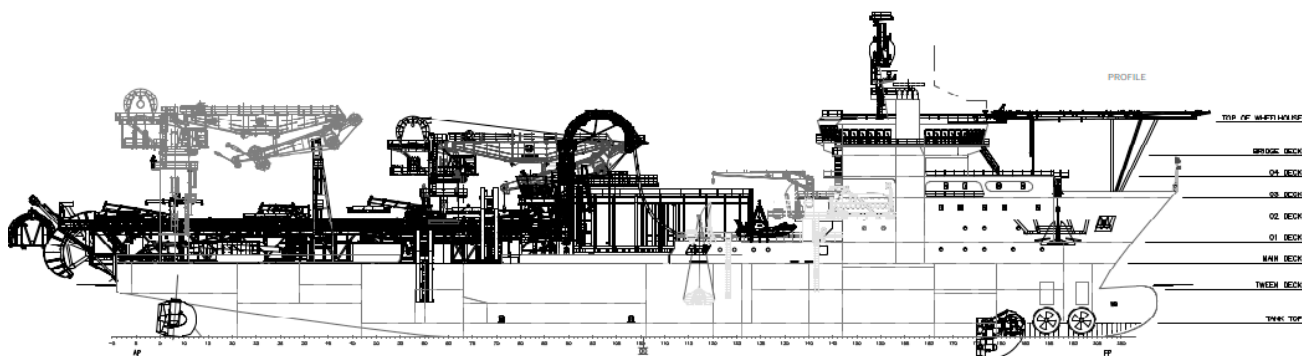
Midship crane	MacGregor 3568 Offshore Knuckle Jib AHC Crane 100 t @ 15 m, 10 t @ 34 m 500 m wire
Aft. crane	MacGregor 3568 Offshore Knuckle Jib AHC Crane 100 t @ 15 m, 10 t @ 34 m 500 m wire
Provision crane	2 x cranes with SWL 2 t @ 12 m
Moonpool	Not present
Mooring winch	2 x 10 t

HELIDECK

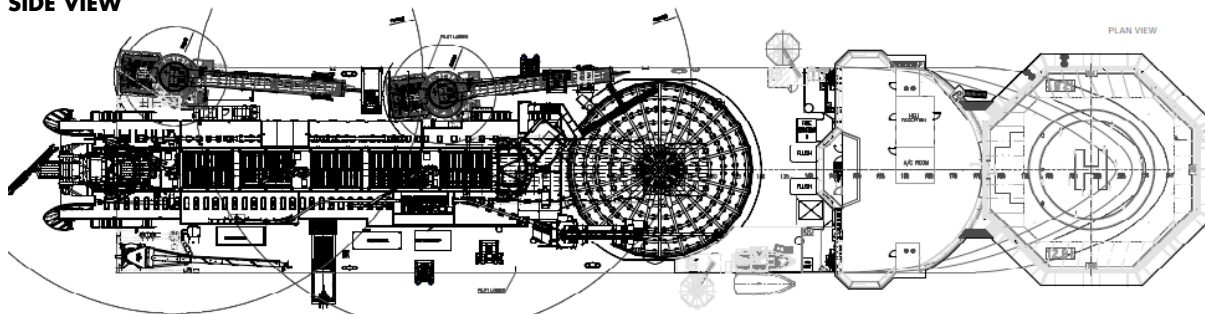
Size	D = 20.88 M; t = 12.8 t; Norway 1.25 d; "Dh" = 26.1 m
------	--

ROV SYSTEM

ROV	1 x WROV Fugro FCV600 125 hp 1 x WROV Panther XT Plus
-----	--

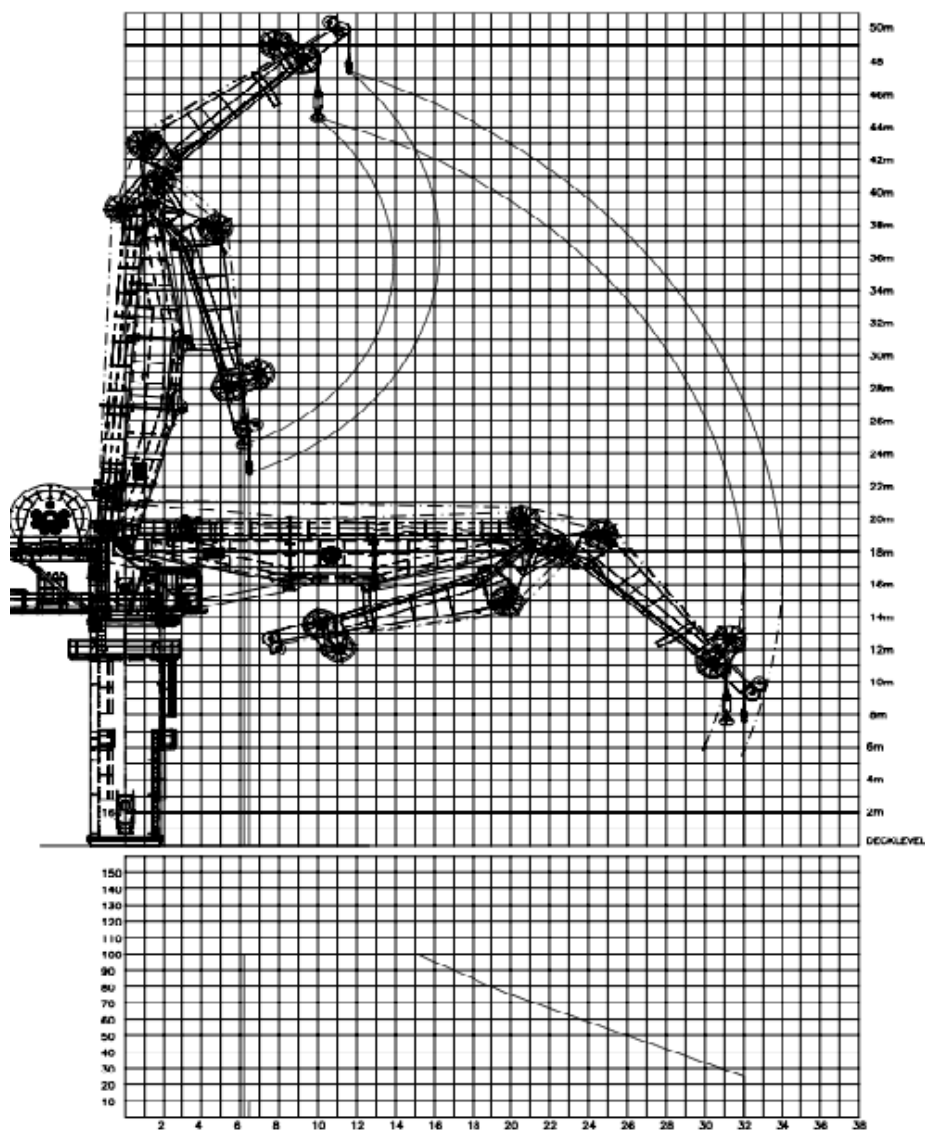


SIDE VIEW



TOP VIEW DECK LEVEL

100 T CRANE LOAD CHART



DP PLOTS

VARIABLE WIND AND WAVES
Limiting 1 minute mean wind speed in knots
at 10 m above sea level

