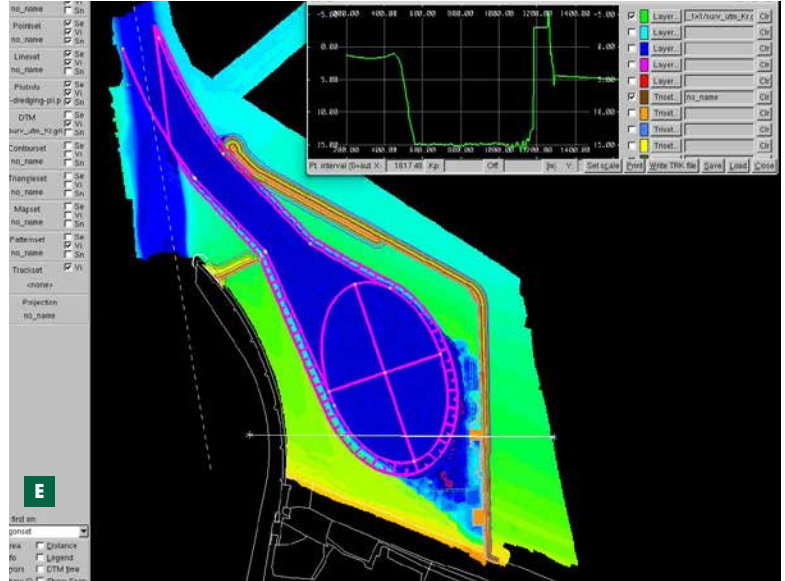
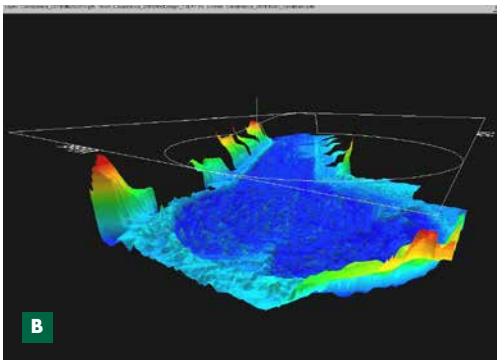
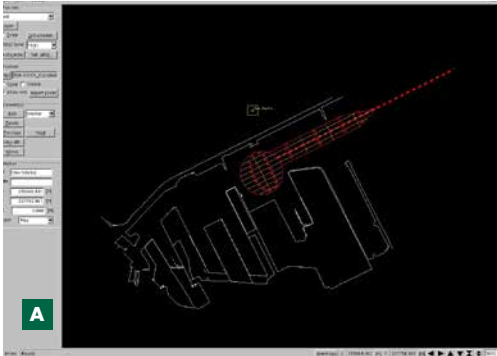


# CAPABILITY SHEET

**DV OFFICE**  
SURVEY PROCESSING, CALCULATIONS & PRESENTATION MODULE



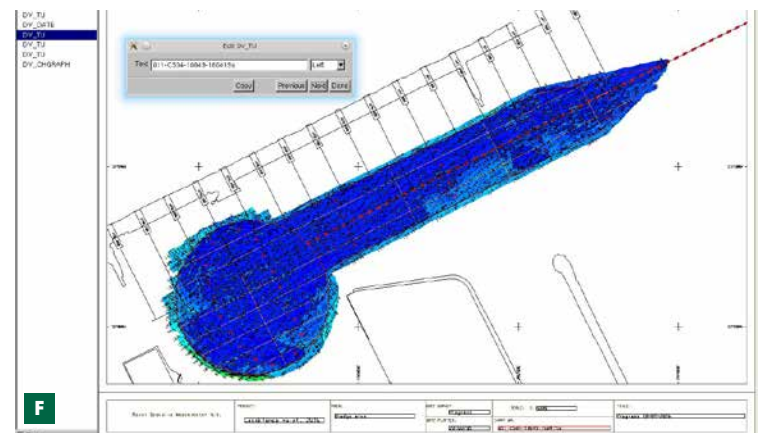
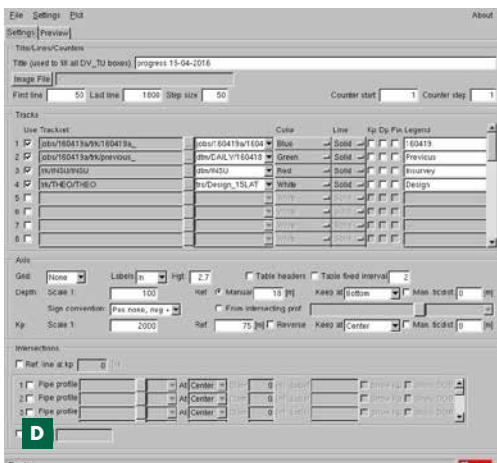
- A** DV Pli editor, Electronic charts
- B** DV 3D View Flythrough
- C** Swinoujscie port expansion project
- D** DV MX Plot Crossection print generator
- E** DV Office Swinoujscie port expansion project
- F** DV Plot Charting program

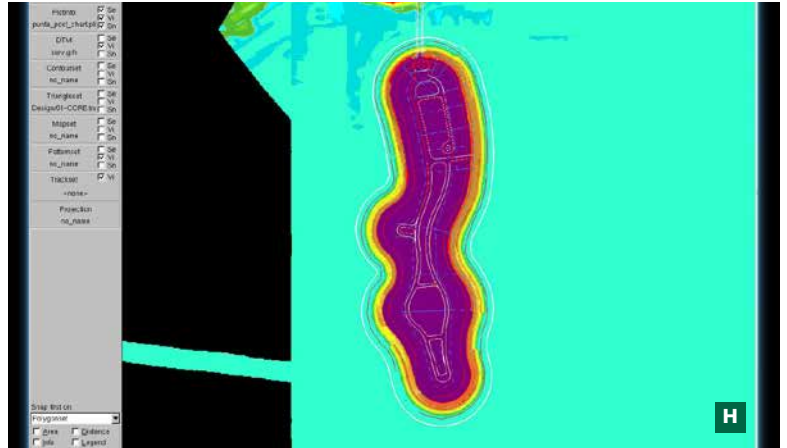
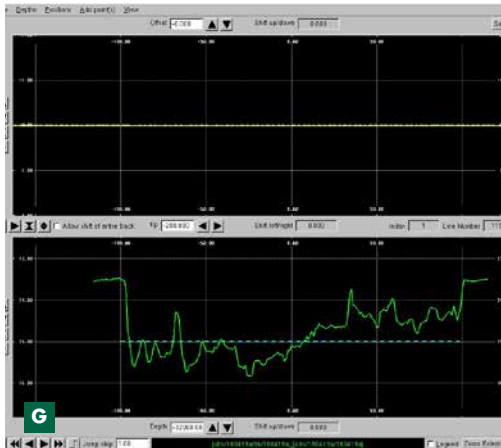
## A STRONG FOCUS ON EFFICIENCY

DV Office is the graphical main processing module, which manages all vessels and equipment to support the survey process and operations in Boskalis on one user controlled display. This includes digital terrain models, point files, charting and triangle networks, depth contours. Data are displayed in top profile and 3D view.

All project phases are supported, from preparation and design, progress monitoring to as-built documentation. The module has been designed with a strong focus on efficiency to fully support optimal project workflow.

Various types of project reports can be generated, such as charts, reports on volume and statistical calculations, and data export such as kml, ascii, dxf and various GIS formats. Reporting can be adapted to client specified format.





**FUNCTIONAL SUMMARY:**

<b>View and Edit</b>	<b>Calculate/Conversions</b>	<b>Import/Export</b>
Projection files	Volumes from grid	ASCII XYZ points
Polygons	Volumes from profiles	DXF
Maps	Volumes from sb tracks	AC script
DTM grid layers	Profiles	LandXML
Triangulations	Depth contours	KML
Line sets	Depth statistics	ESRI ASCII
Electronic Charts	Coordinate conversion	Shape files
Fix files	Tide graphs	
Tide table/Coefficients	Top of pipe finding	
Sound velocity profiles	Triangulation design options	
Single beam surveys		
Topographic surveys		
MBES surveys*		
3Dimensional files		
Vessel model files		
*Pre-processed in third party software		

DTM size and data file size is only limited by the capacity of the harddisk, and with no limitation on the number of data points in any file.

DTM resolution horizontal 0.001m and vertical resolution is 0.01m.

Multi PC station working from same central dataset.

**G** DV Office single beam Track editor  
**H** DV Office Punta Pacifica project

Royal Boskalis Westminster N.V.  
PO Box 43  
3350 AA Papendrecht  
The Netherlands  
T +31 78 69 69 000  
F +31 78 69 69 555  
royal@boskalis.com  
www.boskalis.com