

EQUIPMENT SHEET

WADDEN 1-4
SELF PROPELLED SPLIT BARGES

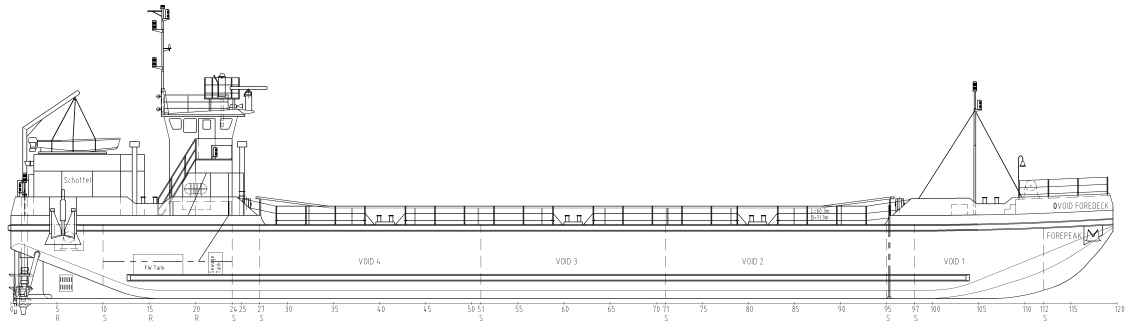


CONSTRUCTION/CLASSIFICATION

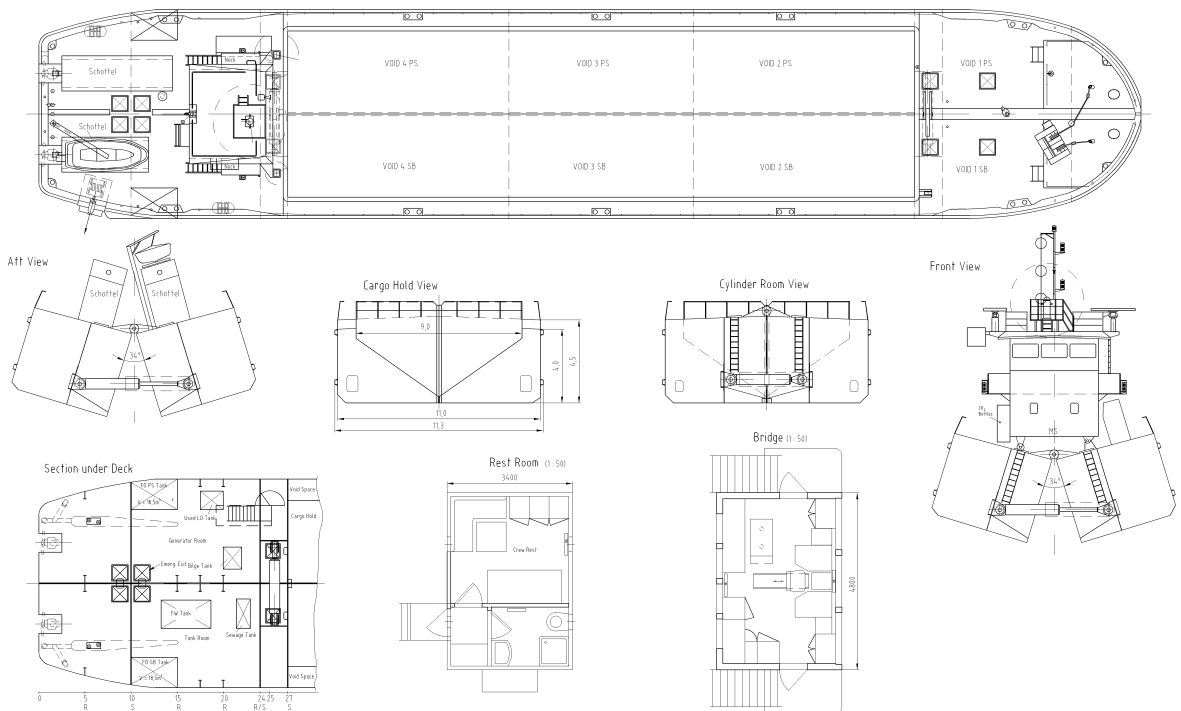
Built by	Severnav, Drobeta Turnu Severin, Romania
Flag	Cyprus
Year of construction	1980
Classification	DNV GL

MAIN DATA

Hopper capacity	935 m ³
LOA	59.95 m
Breadth	11.3 m
Draught loaded	3.08 (3.55 m)
Gross Tonnage	812 GT
Deadweight	1,261/1,553
Total installed power	1,074 kW
Propulsion	2 x 537 kW Caterpillar 3412 DI-TA
Maximum speed	9 kn



SIDE VIEW



TOP VIEW DECK LEVEL