



FEATURES

The CPT units that are available are truck or crawler based. All units have a pushing force of 200 kN, with a pushing speed of 0-250 mm/s. Also, a stand-alone CPT unit is available for practical use on a project site (on a skid or jack-up).

MAIN DATA

Dimensions CPT truck (with standard tires):

Length 8.125 meter

Width 2.495 meter

Height 3.690 meter

Dimensions CPT crawler:

Length 6.020 meter

Width 2.475 meter

Height 3.070 meter

PERFORMANCE

CPT testing with (CPTu) or without pore pressure.

Installation of geotechnical monitoring instruments.

REMARKS

The laboratory of Boskalis Environmental is specialized in geotechnical analyses (soil and rock), soil investigations and installation of geotechnical monitoring instruments on projects in The Netherlands and abroad. For the installation of the monitoring instruments, we most commonly use a Cone Penetration Test (CPT) rig/unit, being the additional advantage that a CPT test can directly be followed by the installation of instruments at the correct depth (x, y, z coordinates).

The number of monitoring equipment, locations and depth, is determined by a geotechnical engineer of a project, in cooperation with our specialists.

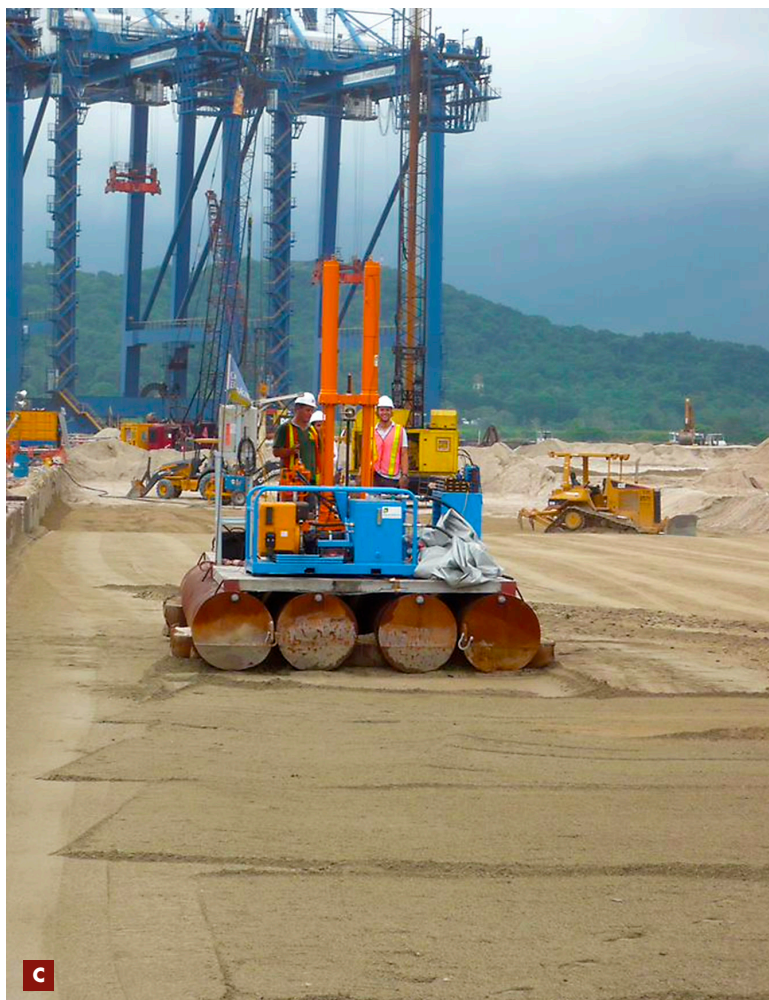
From our office and laboratory in Papendrecht, all projects are supported and coordinated. The technical department of Boskalis Environmental is responsible for the maintenance of our CPT equipment. Risk assessments, technical files and manuals are available and up to date.

We have performed CPT testing on numerous projects and have installed, maintained, and monitored geotechnical equipment amongst others on projects in The Netherlands, Western-Europe, Africa, South-East Asia and the Middle East.

NOTE: Boskalis Environmental can mobilize a lab container as well, to accompany the CPT unit. In such a mobile lab, installation works can be coordinated, and analysis can per performed to support the geotechnical department of a project.



- B** Installation of monitoring equipment
- C** Stand-alone unit (skid)
- D** Mobile lab



Boskalis Environmental
Head Office & Laboratory
 Rosmolenweg 2
 3356 LK Papendrecht
 The Netherlands
 T +31 78 69 69 000
 environmental@boskalis.com
 www.boskalis.com