


**CONSTRUCTION / CLASSIFICATION**

Year of construction	2006
Classification	Bureau Veritas I $\boxtimes$ HULL $\boxtimes$ MACH $\boxtimes$ AUT-UMS $\boxtimes$ DYNAPOS AM/AT R, Anchor Handling Vessel, Supply Vessel, Fire Fighting Ship 1, Unrestricted navigation
IMO number	9322592
Call sign	ORRT
Flag	Belgian
Port of registry	Antwerp
Trading area	Worldwide / Unrestricted

**FEATURES**

Air-conditioned accommodation for 46 persons  
Project office, survey room, ship-wide networked file and mail servers integrated with V-sat internet connection.

Deck area (aft)	450 m <sup>2</sup> ,
mezzanine deck area	128 m <sup>2</sup>
Bunker capacity	950 m <sup>3</sup>
Supply capacity	Ballast/drillwater 379 m <sup>3</sup> , Foam 26.4 m <sup>3</sup> , Fresh water 577 m <sup>3</sup>
Capacity fire-fighting monitors	2 x 1,200 m <sup>3</sup> /hr
Waterspray	available
Crane	AK48 E4, 1.9 t SWL @ 13 m 3.8 t SWL @ 7 m

**TOWING / ANCHOR HANDLING**

Towing / anchor-handling winch: hydraulic	
Waterfall (3 drums)	400 t brake load
Upper drum	line pull 150 t @ 6,8 m/min. on 1 <sup>st</sup> layer
Middle drum	line pull 150 t @ 6,8 m/min. on 1 <sup>st</sup> layer
Lower drum	line pull 150 t @ 6,8 m/min. on 1 <sup>st</sup> layer
Wildcats	2 x 3.25 inch - 120 t pull
Rig chain lockers	2 x 120 m <sup>3</sup> - 240 m <sup>3</sup>
Stern roller	5 m x 2.5 m, 300 SWL

**MAIN DATA**

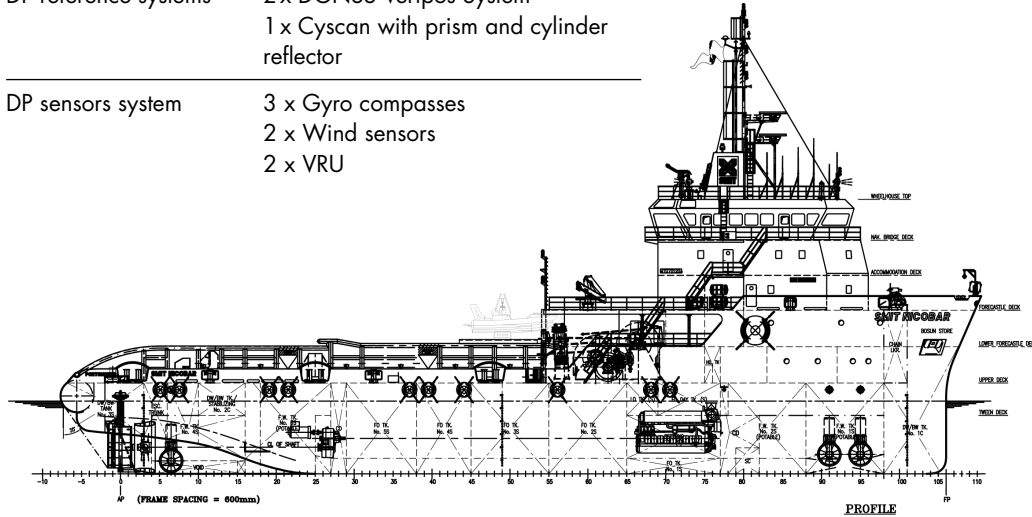
Gross tonnage	2,606 GT
Length overall	70.90 m
Breadth	16.00 m
Max. draught	5.70 m
Main engines	2 x Wärtsilä 9R32
Total power	7,380 kW
Propulsion	2 x controllable pitch conventional
Bow thruster	2 x 550 kW
Stern thruster	1 x 550 kW
Positioning	DP 2
Speed ahead (max./eco.)	13.5 kn / 9 kn
Bollard pull	120 t

**STATION KEEPING (DP)**

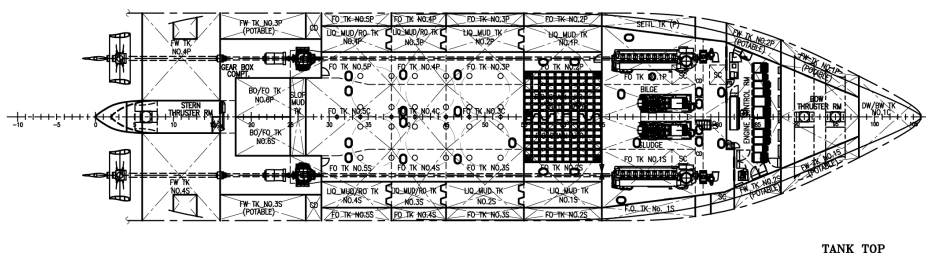
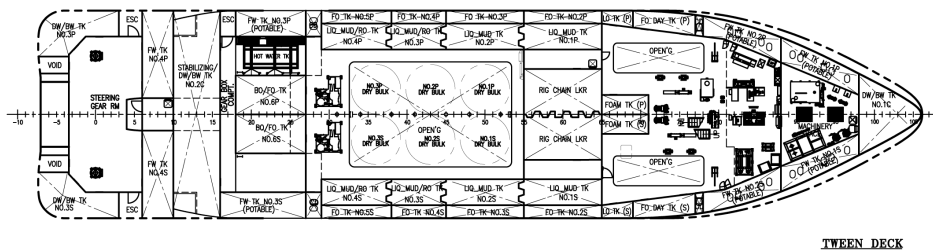
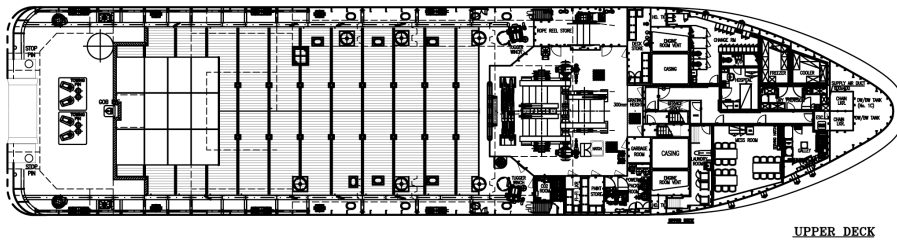
DP classification	DP2
DP system	General Electric GE Seastream Version 8
DP reference systems	2 x DGNSS Veripos System 1 x Cyscan with prism and cylinder reflector
DP sensors system	3 x Gyro compasses 2 x Wind sensors 2 x VRU

**NAVIGATION / COMMUNICATION EQUIPMENT**

Radio equipment for operating in area A1 + A2 + A3
V-Sat capabilities
Inmarsat FBB 500



**SIDE VIEW**



**TOP VIEW DECK LEVEL**