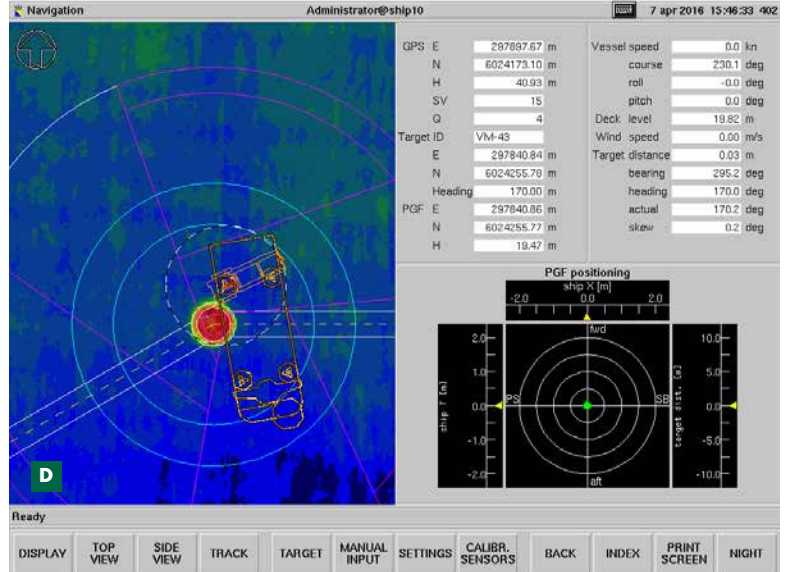


# CAPABILITY SHEET

## DV WIND FARM INSTALLATION MONOPILE TRANSITION PIECE AND JACKET INSTALLATION MODULE FOR OFFSHORE WIND FARM CONSTRUCTION



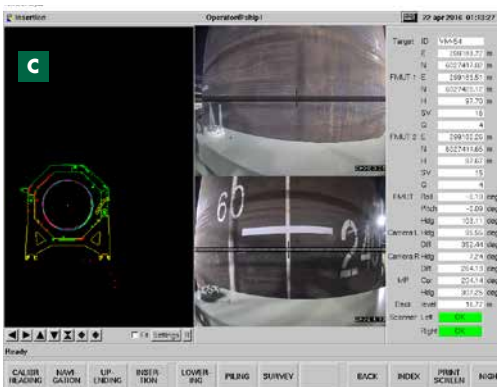
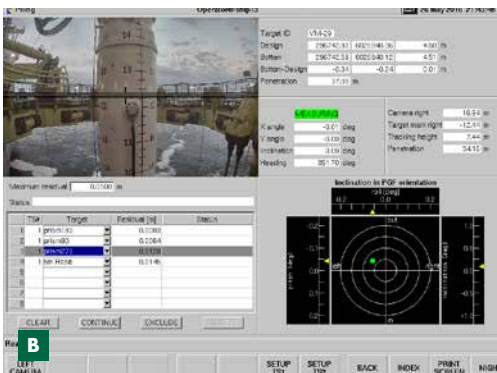
### INDEPENDENT GRAPHICAL DISPLAYS

DV Windfarm installation is the integrated monopile transition piece and jacket installation module for offshore wind farm construction. It is custom-tuned to each Boskalis Windfarm installation project and offshore wind farm installation vessel.

DV Windfarm integrates precise positioning in three dimensions with monopile attitude, position and target information, bathymetric and meteorological information. The software provides various displays with camera feeds and calculations to optimize the piling operation and process.

All information can be presented on independent graphical displays on any display station on board. These real-time displays enable piling operators to accurately position the monopiles to the required attitude and position parameters.

All process and position parameters can be logged in any selectable interval in ASCII format, such as monopile verticality and orientation, position information and vessel position (XYZ).



- A** Windfarm installation vessel Osprey
  - B** DV Windfarm installation Piling Display
  - C** DV Windfarm Monopile insertion display
  - D** DV Windfarm installation Navigation Display
- Royal Boskalis Westminster N.V.  
PO Box 43  
3350 AA Papendrecht  
The Netherlands  
T +31 78 69 69 000  
F +31 78 69 69 555  
royal@boskalis.com  
www.boskalis.com