



## CONSTRUCTION/CLASSIFICATION

Year of construction	2011
Classification	LR ✱ 100AN pontoon
IMO number	9595101

## MAX PERMISSIBLE UNIFORM LOADING

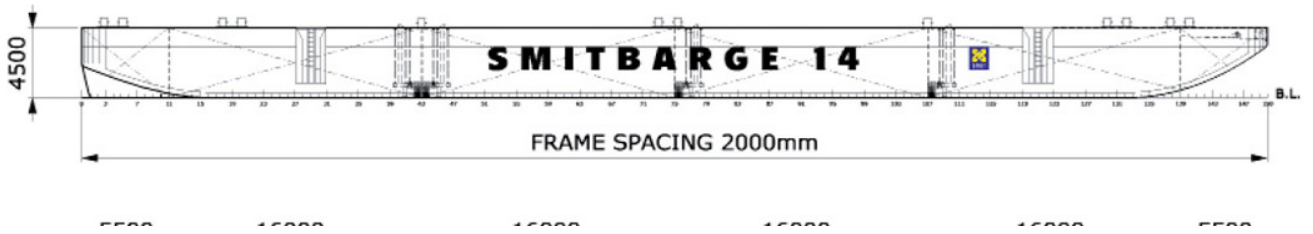
Main deck	15 t/m <sup>2</sup>
C.L. bulkhead	80 t/m <sup>2</sup>
6110 OCL bulkheads	100 t/m <sup>2</sup>
Transverse bulkheads	200 t/m <sup>2</sup>
side shell	180 t/m <sup>2</sup>
web frames	23 t/m <sup>2</sup>
deck longitudinals	9 t/m <sup>2</sup>

## MAX PERMISSIBLE CONCENTRATED LOADING: (STATIC)

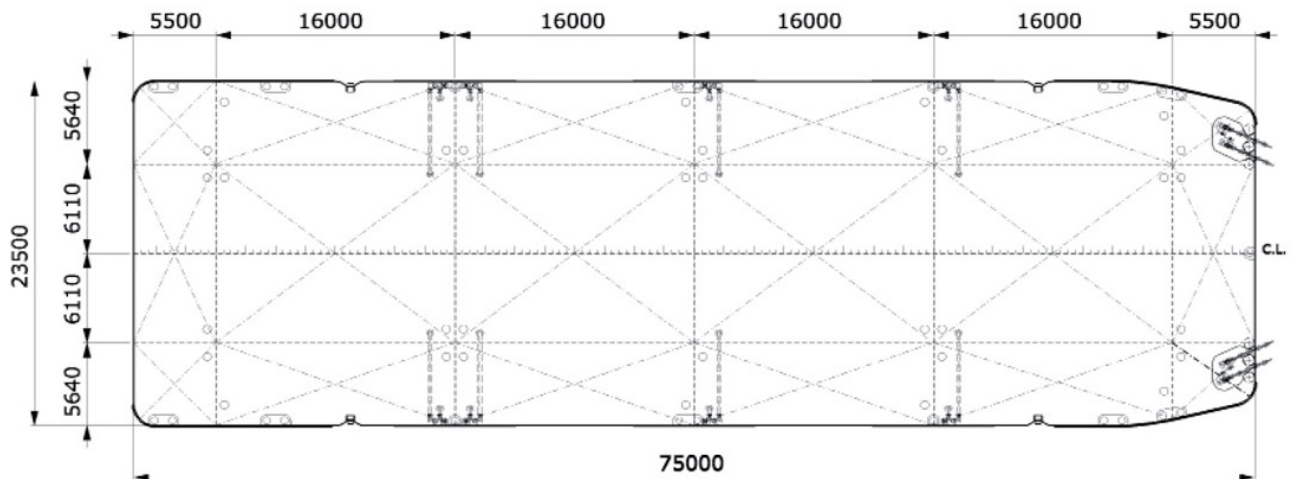
On request available

## MAIN DATA

Gross tonnage	To be determined
Nett tonnage	To be determined
Principal dimensions	75.00 m x 23.50 m x 4.50 m
Draught empty	0.73 m
Draught loaded	3.52 m
Lightweight	Approx 1,100 metric t
Max. tonnage sea	Approx 4,800 metric t
Max. deck load	15 t/m <sup>2</sup>



**SIDE VIEW**



**TOP VIEW DECK LEVEL**