



## CONSTRUCTION/CLASSIFICATION

Year of construction	1999
Classification	A1, AMS, ACCU, DPS-2
IMO number	9185932
Call sign	ORRV
Flag	Belgian
Port of registry	Antwerp
Trading area	Worldwide/unrestricted

## FEATURES

Accommodation	24 berths 8 x single cabins 4 x double cabins 2 x four person cabins
Bunker capacity	fuel 1545 m <sup>3</sup> fresh water 522 m <sup>3</sup>
Other tanks for cargo	Drill water 925 m <sup>3</sup> Base oil 167 m <sup>3</sup> Brine 582 m <sup>3</sup> Dry bulk 240 m <sup>3</sup>
Positioning	Kongsberg DP II (K-pos)

## MAIN DATA

Length overall	73.50 m
Breadth moulded	16.40 m
Depth moulded	8.00 m
Max draught	6.90 m
Deadweight at max draught	2,900 t
Gross tonnage	2,590 GT
Bollard pull ahead	187 t
Speed max	15 kn
Speed economic	10 kn
Deck area	550 m <sup>2</sup>
Max deck cargo	1,000 t
Deck strength	5-10 t/m <sup>2</sup>

## PROPULSION AND MAIN SYSTEMS

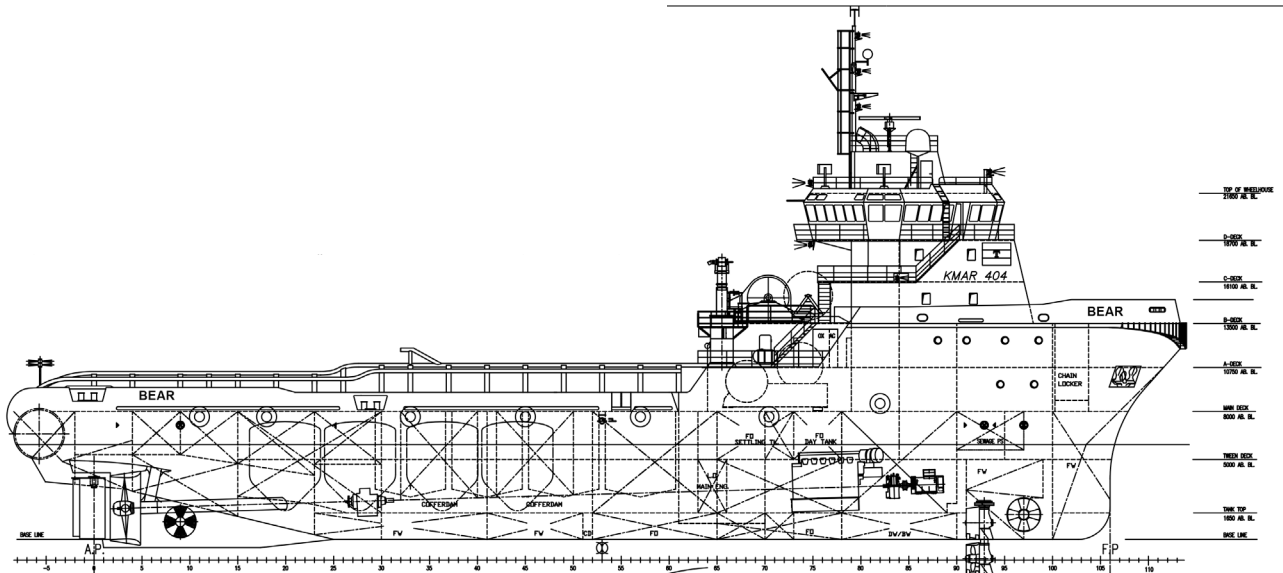
Main engine set 1	1 x 5,530 kW 750 rpm
Main engine set 2	1 x 5,530 kW 750 rpm
Main propulsion	11,060 kW
Steering gear	2 x flaprudder
Forward azimuth	1 x 800 kW, retractable
Bow thruster	1 x 800 kW, tunnel
Stern thruster	1 x 800 kW, tunnel
Fire fighting	FiFi 1, 2 x 1,200 m <sup>3</sup>

### DECK EQUIPMENT

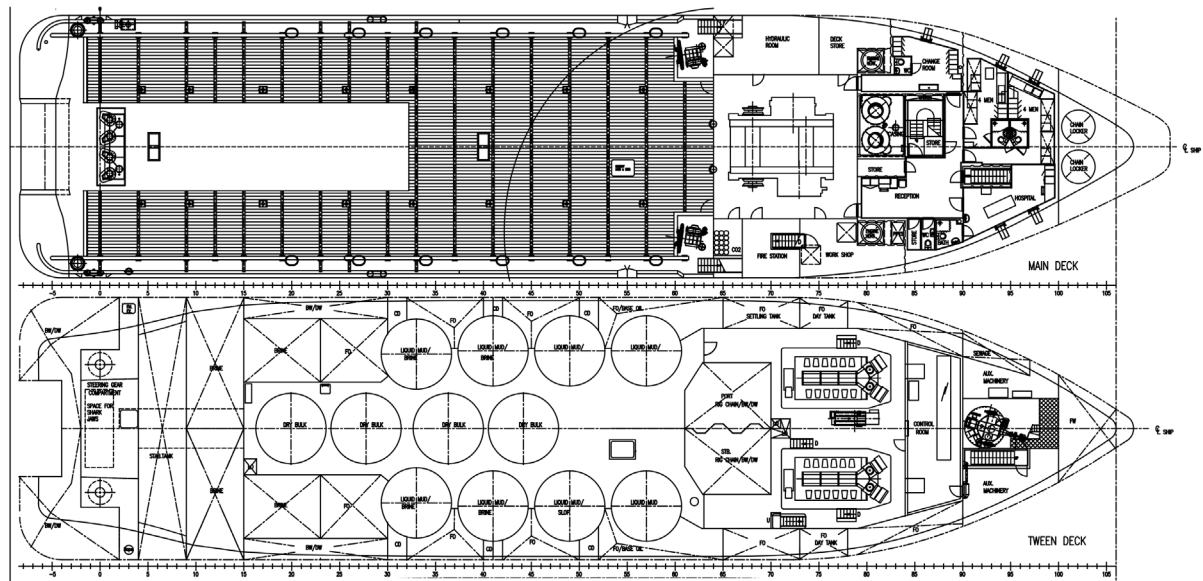
Towing and anchor handling winches	Brattvaag SL 300 t pull / 400 t break 2 x 2,000 m of 76 mm wire
Rope reels	Brattvaag 20 t 2 x 2,000 m of 76 mm
Forward winch	Brattvaag 16.4 t winlass
Capstan winches	Brattvaag 5 t
Tugger winches	Brattvaag 2 x 10 t

### DECK EQUIPMENT

Stern roller	L: 6.0 m x 3.0 m diam. SWL 500 t
Crane	5 t @ 14 m
Towing pins	Karmoy KWT 350-800 / SWL 240 t
Karmoy pins	2 x 500 t SWL
Gypsy wheels	2 x 76 mm / 2 x 84 mm
Chain lockers	capacity 2 x 130 m <sup>3</sup>



### SIDE VIEW



### TOP VIEW DECK LEVEL/TWEEN DECK