



CONSTRUCTION / CLASSIFICATION

Type of vessel	Multipurpose vessel
Class	Bureau Veritas
Trading area	Unrestricted navigation
Flag	Cyprus
IMO number	9503794

PRINCIPAL DIMENSIONS

Length overall	23.6 m
Width	9.9 m
Height	3.5 m
Min. operational draught	±2.4 m
Gross tonnage	157 GT
Net tonnage	47 t

ACCOMMODATION

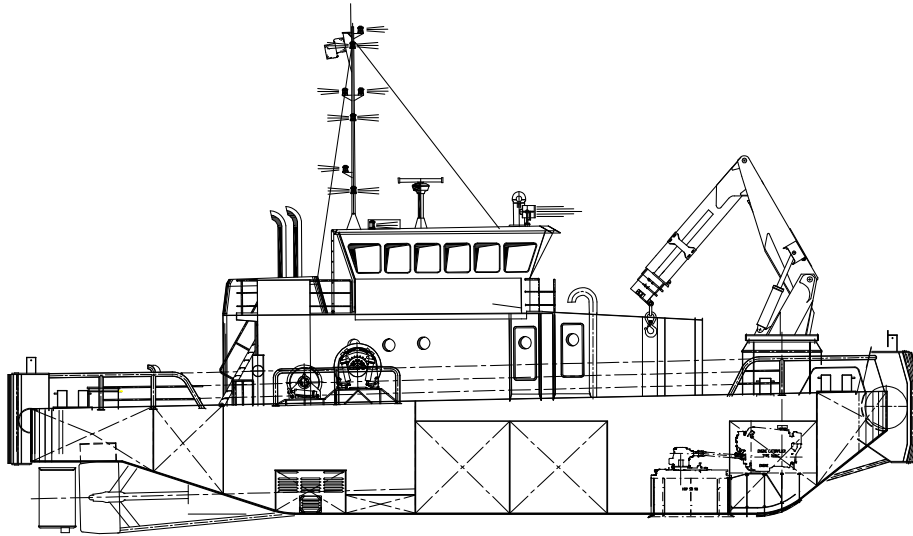
2 cabins for 1 person, 2 cabins for 2 persons, mess room, galley, sanitary, central heated, air conditioning

MAIN DATA

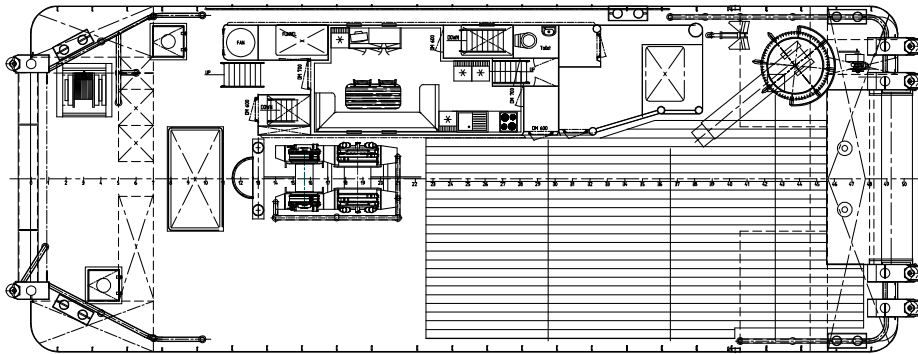
Propulsion	Twin screw, 5-blade fixed pitch props ø1,715 mm
Output main engines	2 x Caterpillar 3508 B, 1,566 kW
Bow thruster	Caterpillar 3406, 358 kW - 360°
Bollard pull approx.	28 t
Free running speed	10 kn
Auxiliary engines	2 x CTA Cummins 83 DCM 164 kW (one air cooled), 2 x 180 kVA (parallel configuration)
Towing winch	1 x 45 t pull, 60 t hold
Anchor handling winch	1 x 45 t pull, 60 t hold
Towing pins	WKH 1500
Tugger winch	1 x 10 t pull, 15 t hold
Hydraulic crane	Heila HLRM 200-3SL SW 11.20 t @ 14.09 m 23.5 t @ 7.60 m

BUNKER CAPACITIES

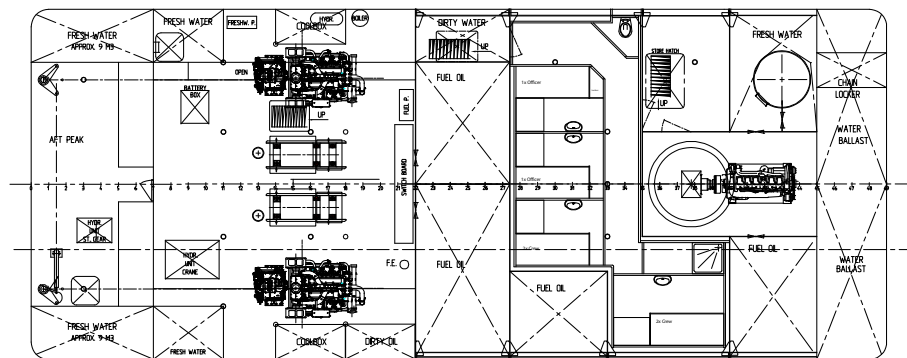
Fuel	93 m ³ (transfer capacity approx. 75%)
Water	37 m ³ (transfer capacity approx. 75%)
Sewage	2 m ³
Transfer pump	
Fuel	80 m ³ /hr @ 2 bar
Water	40 m ³ /hr @ 2 bar



SIDE VIEW



TOP VIEW DECK LEVEL



TOP VIEW BELLOW DECK