

# EQUIPMENT SHEET

**BOKA SPEARFISH**  
CONSTRUCTION SUPPORT VESSEL



## CONSTRUCTION / CLASSIFICATION

Built	Norway
Year of construction	2014
Classification	BV ✕ HULL ✕ MACH Offshore support vessel Supply,Tug, SP Unrestricted navigation COMF-NOISE 3, COMF-VIB 3, GREEN PASSPORT EU, ✕ AUT-UMS, ✕ SYS-NEQ-OSV, CLEANSHIP, ICE CLASS IC, ✕ HEL, INWATERSURVEY, ✕ DYNAPOS AM/AT R, SDS
IMO	9676280
Port of registry	Valletta
Call sign	9HA6521
Flag	Malta

## FEATURES

The vessel is an Construction Support Vessel (CSV) designed and equipped for subsea operation duties such as construction and installation work, inspection and maintenance. The vessel is environmentally friendly with focus on low fuel consumption through its hull shape and diesel-electric machinery.

Boka Spearfish is a vessel equipped with a 250 t active heave compensated subsea crane, capable of delivering loads to depths up to 2,800 m and is a versatile and cost effective working platform for a broad range of demanding offshore projects.

250 t AHC subsea crane with 3,000 m wire and 20 t whipline with AHC

Integrated overside LARS and moonpool LARS, both with AHC and in enclosed hangars

## MAIN DATA

Length overall	120.9 m
Length between p.p.	110.8 m
Breadth moulded	23.0 m
Draft, max	6.6 m
Dead weight	5,250 t

## DECK CAPACITIES

Free deck area	1,350 m <sup>2</sup>
Length	80 m
Width	22 m
Moonpool	7.2 m x 7.2 m

---

**PROPULSION**

Main propellers	2 x frequency controlled Rolls Royce Comtaz azimuth thrusters Power: approx. 3,000 kW each
Side thrusters	2 x Rolls Royce side thrusters 1,900 kW 1 x El driven Rolls Royce swing-up thruster 1,500 kW
Main generators	4 x Wärtsilä 2,760 eKW - 720 rpm
Harbour generator	1 x Cummins 750 eKW - 1,800 rpm
Emergency generator	1 x Scania Stamford - DI 12 62M - 1,800 rpm

---

**DYNAMIC POSITIONING**

DP classification	DP-2
DP System	Kongsberg K-Pos Dp-21
Reference Systems	2 x DGPS Kongsberg DPS i2 2 x Kongsberg HiPAP 501 1 x Radius 1000 1 x CyScan MK4
Motion reference units	3 x MRU 5

---

**ACCOMMODATION**

Capacity	110 bunks
Single cabins	4 state cabins 9 officer cabins 21 crew cabins
Double cabins	38 crew cabins

---

**TANK CAPACITIES**

Drill / ballast water	5,400 m <sup>3</sup>
Fresh water	1,009 m <sup>3</sup>
MEG	300 m <sup>3</sup>
FUEL	1,400 m <sup>3</sup>

---

**DECK EQUIPMENT**

Offshore crane	250 Te AHC Main crane - 3,000 m 20 Te AHC Whip line - 3,000 m Man-riding 10 t @ 40 m on Whip Line
Provision crane	2 x 3 t @ 15.7 m
Hangar crane	Foldable crane in ROV hangar Capacity: 1 t @ 16 m; 4.3 t @ 4.7 m

---

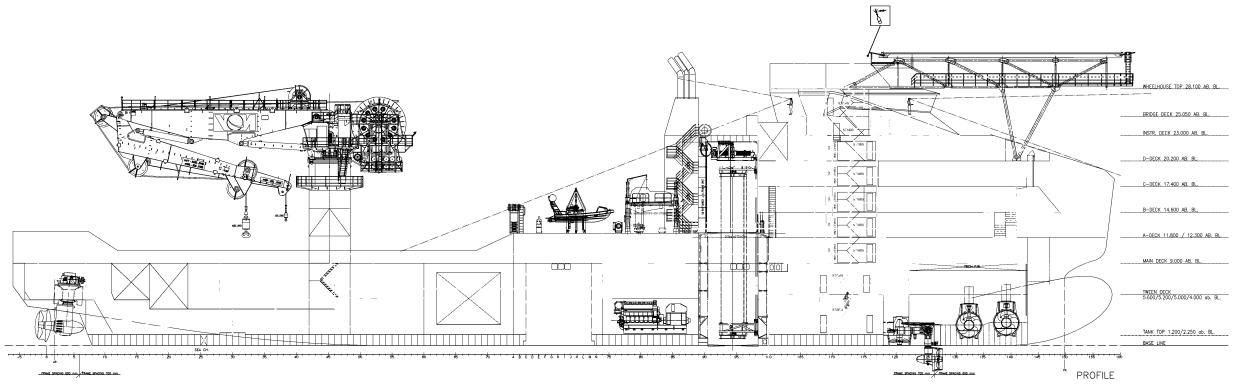
**FRC AND LIFEBOATS**

Lifeboats	4 x lifeboats (100% coverage each side) One lifeboat is classed as MOB boat
Liferafts	Liferafts for 25 persons on each side
Rescue/mob boat	Fast rescue craft - SOLAS approved

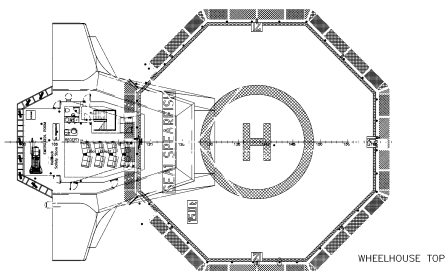
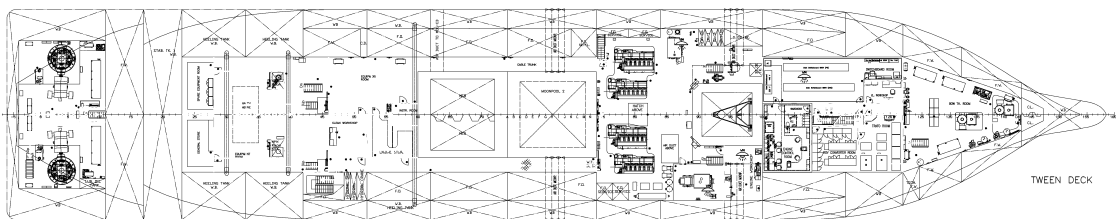
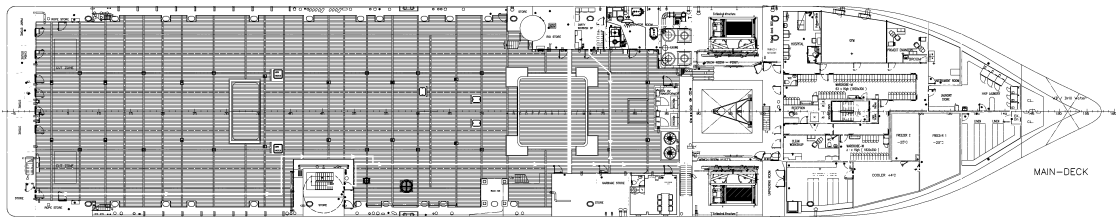
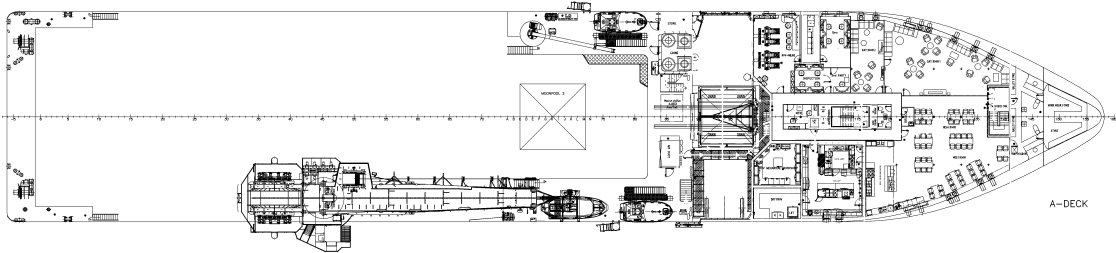
---

**HELIDECK**

21-D value octagonal aluminium  
Suitable for Sikorsky S-92, max. 15 t



**SIDE VIEW**



**TOP VIEWS**

The information contained in this data sheet is for guidance purposes only and may be subject to changes. © Boskalis. All rights reserved.