

EQUIPMENT SHEET

SEA1 SPEARFISH
CONSTRUCTION SUPPORT VESSEL



CONSTRUCTION / CLASSIFICATION

| | |
|----------------------|---|
| Built | Norway |
| Year of construction | 2014 |
| Classification | DNV ✕ A1, E0, DYNPOS- AUTR, DK(+), HELDK-SH, ICE-1B (hull only), ICE-C, SF, BIS, CLEAN DESIGN, RECYCLABLE, NAUT-AW, ComfV(3)-C(3), SPS Resolution MSC.266(84), Code of safety for special purpose ships, 2008 |
| IMO | 9676280 |
| Port of registry | Nassau |
| Call sign | C6DA7 |
| Flag | Bahamas |

FEATURES

The vessel is an Offshore Subsea Construction Vessel (OSCV) designed and equipped for subsea operation duties such as construction and installation work, inspection and maintenance. The design is of type OSCV 03. The vessel is environmentally friendly with focus on low fuel consumption through its hull shape and diesel electric machinery.

Siem Spearfish is a vessel equipped with a 250 t active heave compensated subsea crane, capable of delivering loads to depths up to 2,800 meters and is a versatile and cost effective working platform for a broad range of demanding offshore projects.

250 t AHC subsea crane with 2,800 m wire and 20 t whipline with AHC

Integrated overside LARS and moonpool LARS, both with AHC and in enclosed hangars

MAIN DATA

| | |
|---------------------|---------|
| Length (LOA) | 120.9 m |
| Length between p.p. | 110.8 m |
| Breadth moulded | 23.0 m |
| Draft, max | 6.6 m |
| Dead weight | 5,000 t |

DECK CAPACITIES

| | |
|----------------|----------------------|
| Free deck area | 1,350 m ² |
| Length | 80 m |
| Width | 22 m |
| Moonpool | 7.2 m x 7.2 m |

PROPULSION

| | |
|---------------------|---|
| Main propellers | 2 x Well proven frequency controlled Rolls Royce Comtaz azimuth thrusters Power: approx. 3,000 kW each |
| Side thrusters | 2 x Rolls Royce side thrusters 1,900 kW 1 x El driven Rolls Royce swing-up thruster 1,500 kW |
| Main generators | 4 x Wärtsilä 2,760 eKW - 720 rpm |
| Harbour generator | 1 x Cummins 750 eKW - 1,800 rpm |
| Emergency generator | 1 x Scania Stamford-DI 12 62M - 1,800 rpm |

NAVIGATION EQUIPMENT

| | |
|------------------------|--|
| Dynamic positioning | Kongsberg K-Pos DP-21 |
| Reference systems | DPS 700 radius 1,000 D Cyscan 1,000 m range, 2 x H IPAP 501 W/ LONG POLE |
| Motion reference units | 2 x MRU 5, 1 x MRU D |
| DGPS | 2 x DGPS Kongsberg DPS 132 and DPS 232 |

ACCOMMODATION

| | |
|---------------|--|
| Capacity | 110 bunks |
| Single cabins | 4 state cabins 9 officer cabins 21 crew cabins |
| Double cabins | 38 crew cabins |

TANK CAPACITIES

| | |
|-----------------------|----------------------|
| Drill / ballast water | 5,400 m ³ |
| Fresh water | 1,009 m ³ |
| MEG | 300 m ³ |
| FUEL | 1,400 m ³ |

DECK EQUIPMENT

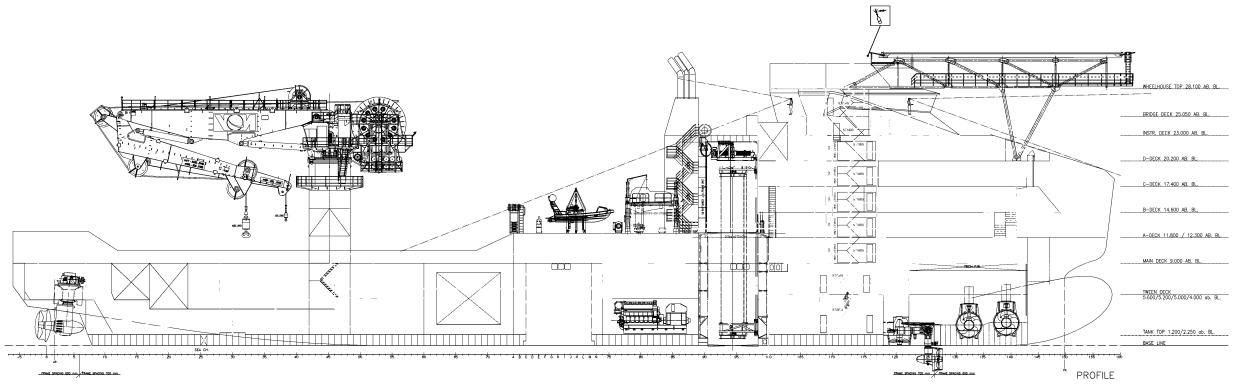
| | |
|-----------------|---|
| Offshore Crane | 250 Te AHC Main crane - 3,000 m 20 Te AHC Whip line - 3,000 m Man-riding 10 t/40 m on Whip line |
| Provision crane | 2 x 3 t - 15 m |
| Hangar crane | Foldable crane in ROV hangar Capacity: 1 t - 16 m, SWL 4.3 t - 4.7 m |

FRC AND LIFEBOATS

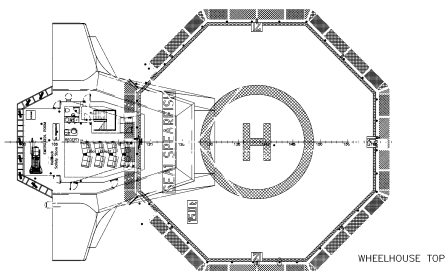
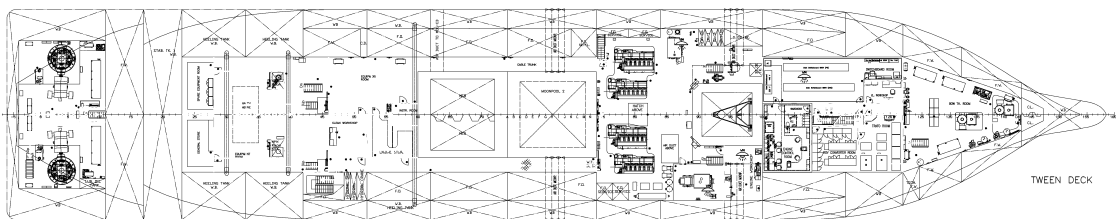
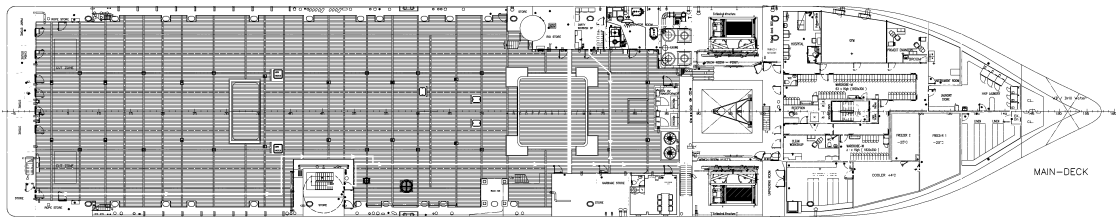
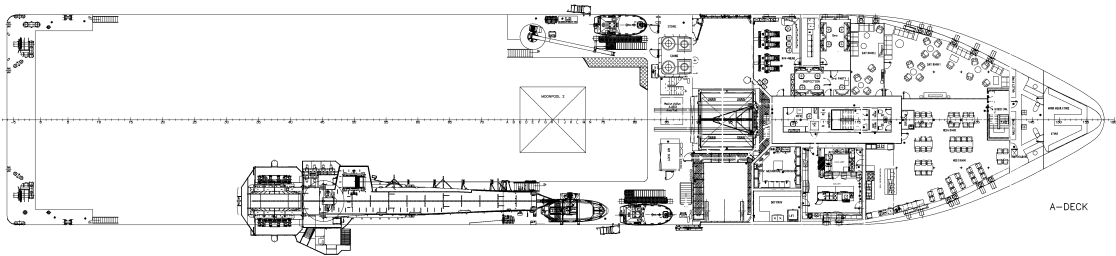
| | |
|-----------------|--|
| Lifeboats | 4 x lifeboats with davit - SOLAS (100% Coverage each side, 95 kg/pax) One lifeboat is classed as MOB boat |
| Liferafts | Liferafts for 25 persons on each side |
| Rescue/mob boat | Fast rescue craft - SOLAS approved |

HELIDECK

21-D value octagonal aluminium
Helideck DNV certified with HELDK-SH



SIDE VIEW



TOP VIEWS