



GENERAL INFORMATION

Type of Vessel	Multi Role Survey
Year of Build	1986
Reconfigured	2018
Flag	UK
Port of Registry	Lowestoft
Call Sign	MCJO2
IMO Number	8517205
MMSI Number	232013164
Owner & Operator Information	GARDLINE LTD
Classification Society	Bureau Veritas
DP Class	DP2

CAPACITY

Fuel Oil Capacity	385.2 m ³
Freshwater Capacity	149.8 m ³
Ballast Water Capacity	509.2 m ³

DIMENSIONS

Length Overall (m)	68.5
Breadth (beam) (m)	11.5
Depth (m)	6.6
Draft (m)	3.6 - 4.1
Air Draft (m)	23.1
GT (t)	1573
NT (t)	471

MACHINERY AND PERFORMANCE

Main Engine(s) Type and Power output	Cummins KTA-38 (2 x 840 kW)
Auxillary Engines	Cummins KTA-19 (2 x 450 kW)
Propulsion System	2x Controllable Pitch Propellers 2x Bowthruster 1x Sternthruster
Speed	Eco 8 kts Max 10 kts Transit 9 kts

ACCOMMODATION

Accommodation: Nos. of Cabins	
Single	8
Double	18
Additional	1x Hospital
Total Berths	44
Laboratories	Survey Lab
Workspaces for Onboard Data	
Interpretation / Office	Processing Rooms
Passenger Capacity	Nil
Facilities Available	Gym, TV Lounge

SAFETY

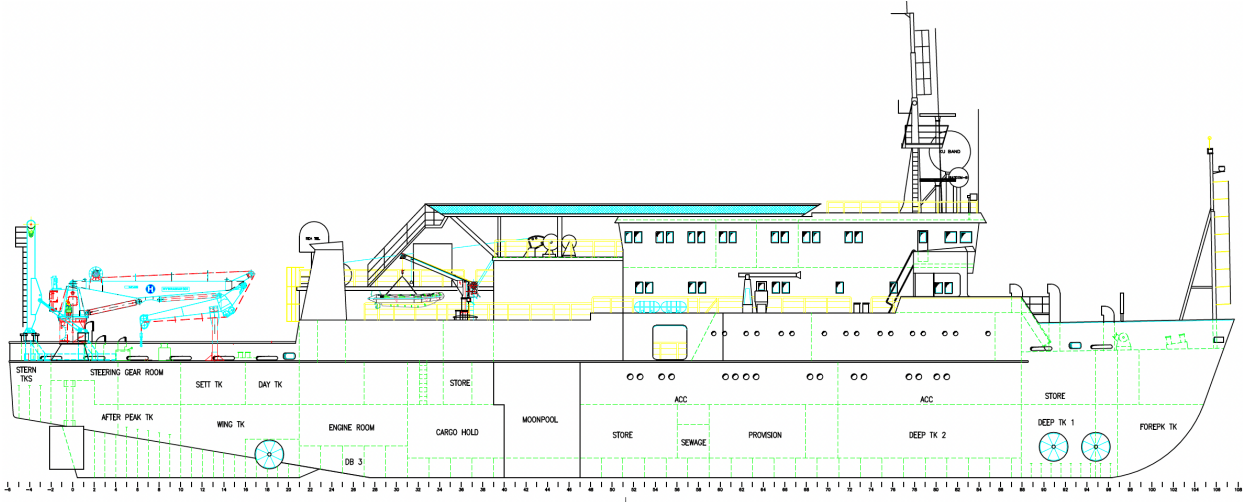
Lifeboats and Life Rafts	6x inflatable liferafts ^(25 pax)
Firefighting Equipment	SOLAS-compliant FFE
Pollution Prevention	MARPOL-compliant SOPEP

NAVIGATION AND COMMS

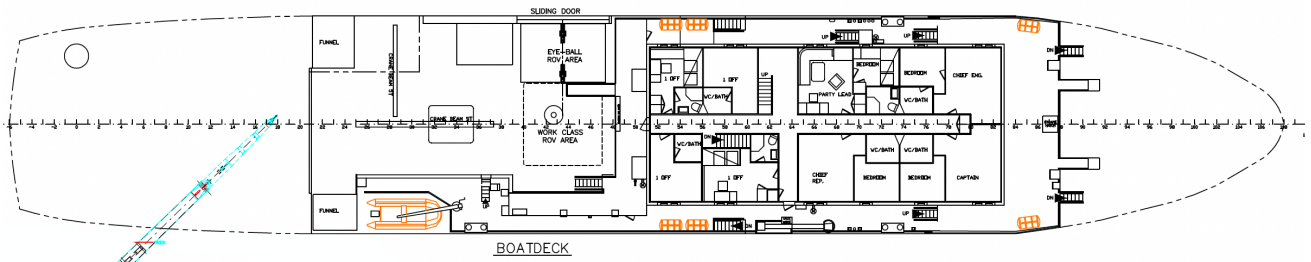
Advanced Radar Systems	Furuno FAR-2117 x 2
Positioning / Nav Systems	Furuno GP-150 GPS
DPS	C-Nav 3050 DGPS
Comm Equipment	Sailor ^(VHF DSC, MF/HF DSC & SAT-C) <small>(VHF, HF, SATCOM)</small>
AIS	Furuno FA-150 AIS

SURVEY EQUIPMENT

Vibrocorers	3m Vibrocore
CPT	Neptune 3000, Neptune 5000 to 850m Water Depth
Piston Core	Kullenberg type 3/5/6m
Visual Sampling	Shallow Water Camera, Freshwater Lens Camera Deep Water Camera
Grab Sampling	Day Grab, Mini Hamon Grab, Double Van Veen Grab, Van Veen Grab, UNSEL Box Corer, Shipek Grab
Water Sampling	Rosette Sampler, Niskin Bottles, Plankton vertical trawl, CTD
PAMS	Gardline MK3 PAM System
SBES	Kongsberg EA400
MBES	EM712
SSS	Edgetech 4200 - Multiple Frequencies
SBP	16 Element Hull Mounted Pinger
Magnetometers	Geometrics G882 Magnetometer
UHR Seismic Streamer	Geometrics GeoEEL 3.125m (8/16/24/32) Channel ^(max 100m) Seis 96 Channel System
Seismic Streamer	Sercel 428 Recording System, Sercel Solid Sentinal Active Sections (SSAS 12.5m), 1200m (96ch)



SIDE VIEW - PORT SIDE



TOP VIEW - DECK LEVEL