

EQUIPMENT SHEET

WILLEM VAN ORANJE
TRAILING SUCTION HOPPER DREDGER



CONSTRUCTION / CLASSIFICATION

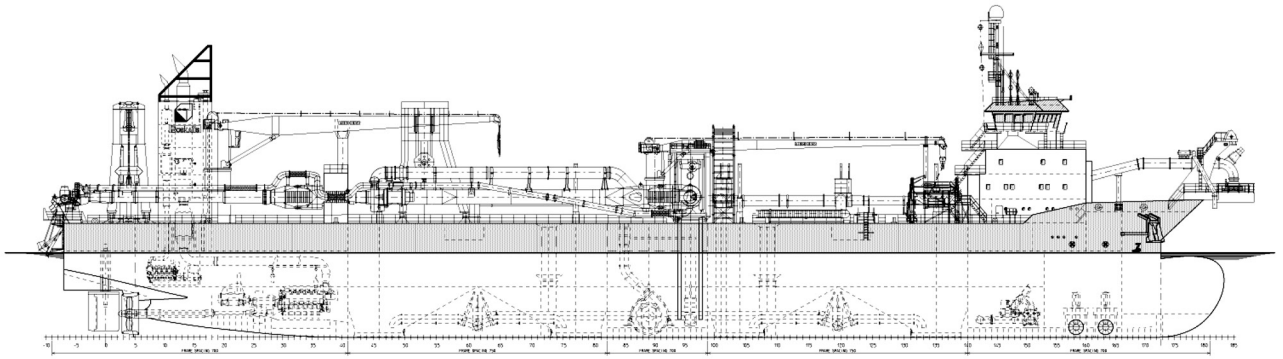
| | |
|----------------------|--|
| Built by | IHC Dredgers B.V. |
| Year of construction | 2010 |
| Classification | 1 ✕ Hull ✕ Mach. Hopperdredger. Unrestricted Navigation. Dredging within 15 miles from shore or within 20 miles from port; or dredging over 15 miles from shore with a significant wave height restriction to 3.0 m. ✕ AUT-UMS |

FEATURES

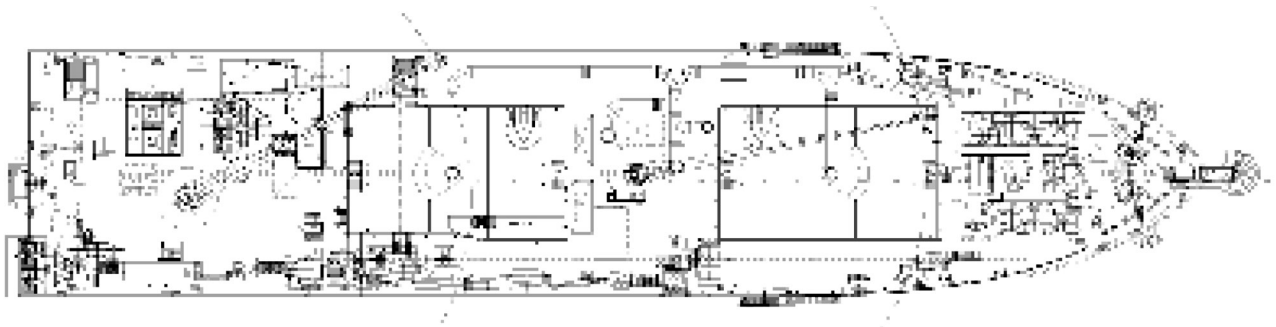
| |
|--|
| 2 Separate hoppers with pump room in between. |
| Accommodation on fore ship. |
| 1 Suction pipe with submersible dredge pump at starboard side. |
| 2 Fixed deckcranes. |
| Relative small draught. |

MAIN DATA

| | |
|---------------------------------|--|
| Gross tonnage | 13,917 GT |
| Length overall | 143.53 m |
| Breadth | 28.00 m |
| Moulded depth | 13.50 m |
| Max. draught Int. load line | 8.00 m |
| Max. draught dredging load line | 10.00 m |
| Carrying capacity (D.W.) about | 22,000 t |
| Hopper capacity | 12,000 m ³ |
| Suction pipe diameter | 1 x 1,200 mm |
| Max. dredging depth approx. | 62.00 m |
| Discharge systems | Dumping through bottom doors (4), shore discharge and rainbow. |
| Sailing speed loaded | 15.4 kn |
| Total installed power | 13,870 kW |
| Sand pump output | Inboard dredge pump: 7,500 kW Submersible dredge pump: 3,500 kW |
| Jet pump output | 2 x 1,250 kW |
| Pump ashore output | 7,500 kW |
| Propulsion power sailing | 2 x 6,000 kW |
| Bow thruster | 2 x 700 kW |



SIDE VIEW



TOP VIEW DECK LEVEL