

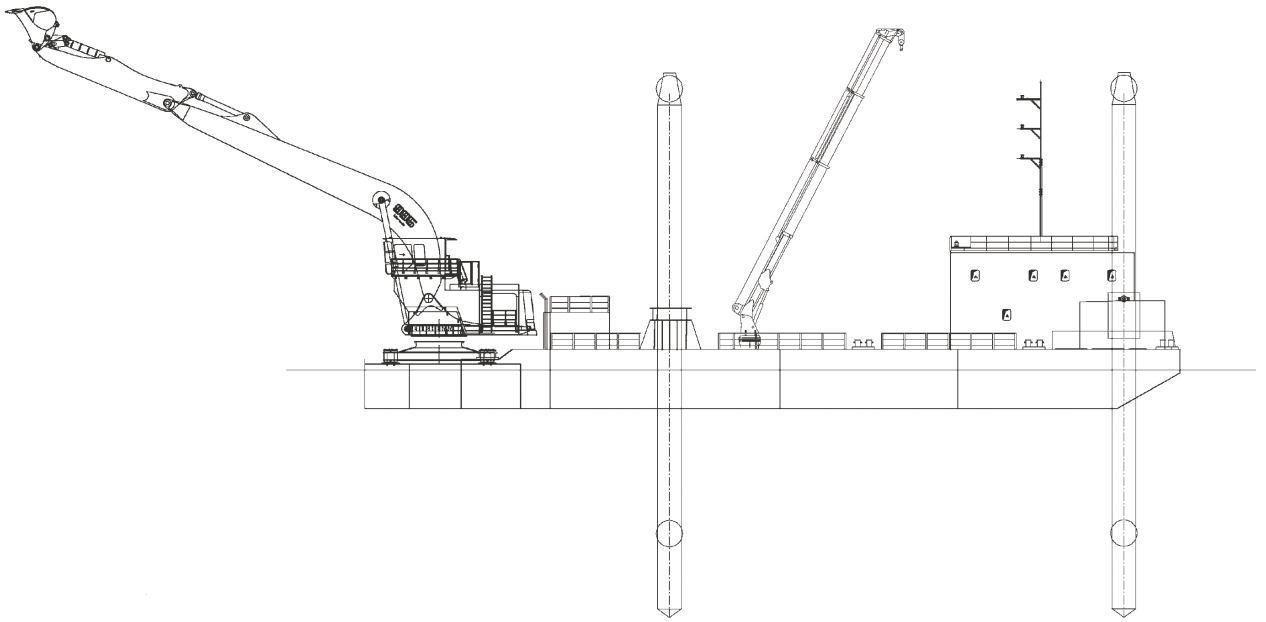


CONSTRUCTION / CLASSIFICATION

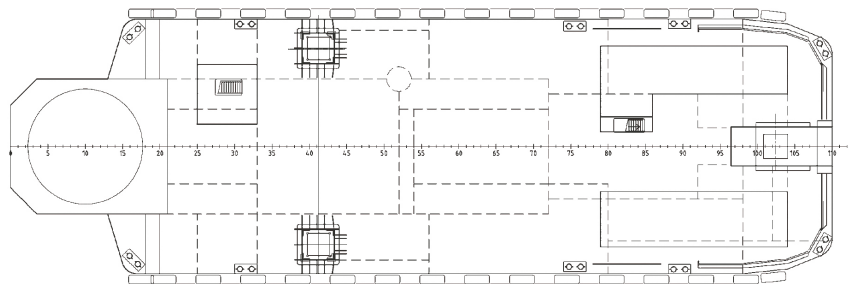
Built by	Port Said Engineering Works, Egypt/Turku Repair Yard, Finland
Year of construction	1999
Year of modification	2002
Classification	B.V. I HULL Dredger no propulsion. Unrestricted navigation. Dredging within 15 miles from the shore, or 20 miles from port.

MAIN DATA

Gross tonnage	1,090 GT
Length overall	55.00 m
Length pontoon	55.00 m
Breadth	17.00 m
Moulded depth	4.00 m
Normal draught	3.00 m
Type of excavator	Liebherr P995
Bucket capacity mud bucket	22.00 m ³
Bucket capacity H.D. bucket	9.00 m ³
Max. dredging depth	26.00 m
Anchoring system	3 spuds/tilting spud
Total installed power	2,085 kW
Excavator engine power	1,600 kW



SIDE VIEW



TOP VIEW DECK LEVEL