

EQUIPMENT SHEET

FJORD
SEMI-SUBMERSIBLE BARGE



CONSTRUCTION / CLASSIFICATION

Year of built	2000
Classification	Bureau Veritas ⚓ HULL, ⚓ MACH, Special service, Semi submersible heavy lift barge with no propulsion, Unrestricted navigation, Cleanship
IMO number	8636740
Flag	Malta
Port of registry	Valletta

SUBMERGING PARTICULARS

Submersible draught aft	19.00 m
Submersible draught fwd	19.00 m
Removable buoyancy tanks	2 each

CARGO CAPACITY

Deadweight	24,500 t
Deck area	6,000 m ²
Free deck length	131.80 m
Deck load	25 t/m ²

MAIN TOWING BRIDLE

Stud link chain	2 x 35 m 92 mm U3 + triangle plate
Bridle recovery	A-frame with winch

MAIN DATA

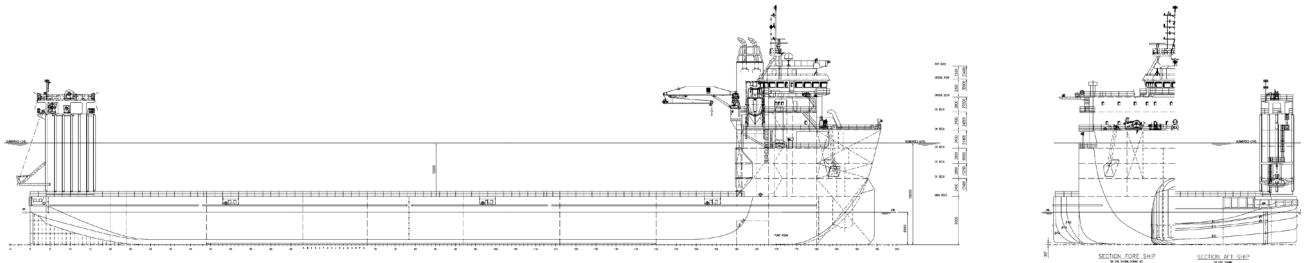
Length	159.24 m
Breadth	45.50 m
Depth	9.00 m
Draught summer	6.113 m
Draught submerged	19 m
Light weight ship	14,434 t
Pump capacity	4 x 1,100 m ³ /h 3 x 1,000 m ³ /h
Auxiliary generator	2 x 580 kW, 1 x 500 kW
Emergency generator	590 kW

ACCOMMODATION

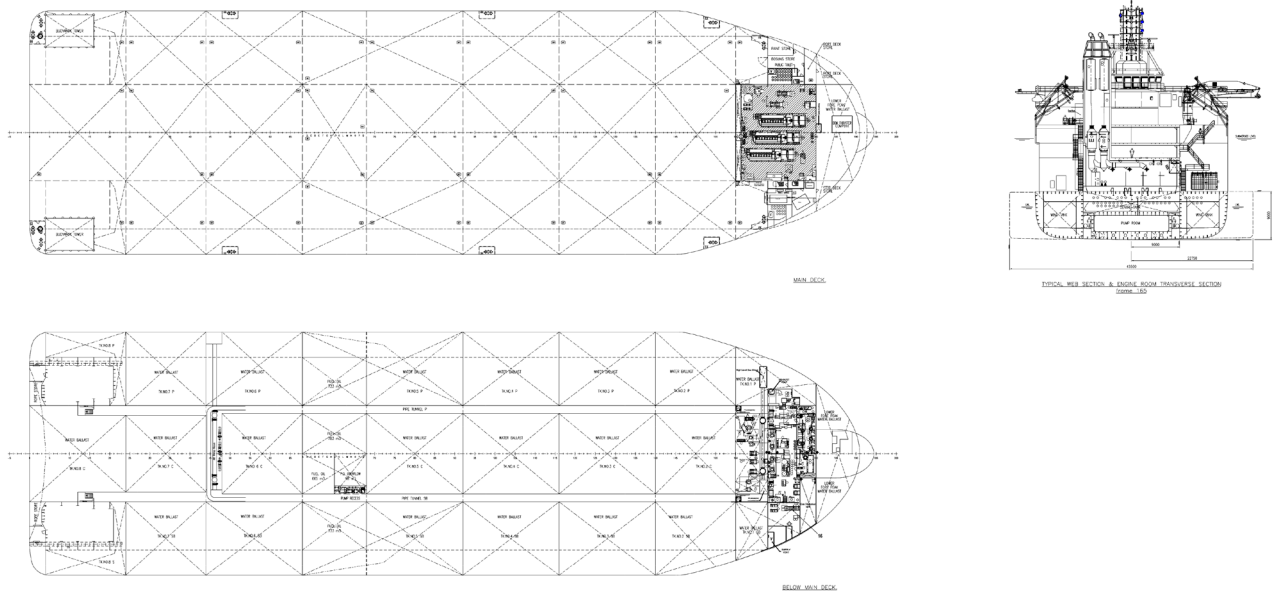
Spacious control room on top deck with all ballast controls and good view on main deck and surroundings. Below a mess room and kitchen with toilet and 4 beds. All accommodation is fully air-conditioned.

DECK EQUIPMENT

Anchors	2 x (bow) Speck anchor 11,500 kg 2 x (stern) anchor 8,000 kg
Anchor winches	2 x 37 t electric driven
Chain	2 x 12 lengths of 78 mm U3 chain
Line pull anchor chain	46 t
Mooring winches	Fore 2 x 34 t, aft 2 x 34 t electric driven
Cargo winches	Fore 2 x 15 t, aft 2 x 15 t electric driven
Store crane	10 t, 4 - 20 m stores handling



SIDE VIEW



TOP VIEW DECK LEVEL