

# EQUIPMENT SHEET

## MIGHTY SERVANT 1

SEMI-SUBMERSIBLE HEAVY TRANSPORT VESSEL



### CONSTRUCTION/CLASSIFICATION

Built by	Oshima yard-Nagasaki/Japan
Year of construction	1983
Classification	Bureau Veritas   $\boxtimes$ HULL, $\boxtimes$ MACH, Special service, Semi submersible heavy lift vessel, unrestricted navigation, AUT-UMS (SS), MON-SHAFT
IMO number	8130875
Flag	Curaçao
Port of registry	Willemstad

### MAIN DATA

Length overall	190.03 m
Breadth moulded/max	50.00 m
Depth	12.00 m
Draft submerged at FPP/APP	21.38/26.00 m
Summer draft	8,77 m
Deck space [l x w]	150.00 x 50.00 m
Deadweight	40,910 t
Trial speed	13.00 kn
Total installed power	14,220 kW
Main engines	2 x 6,500 kW

Main propulsion	2 x 4-bladed c.p. propellers driven by four E-motors of 3,100 kW each
Bow thruster	2 x 500 kW

### NAVIGATION EQUIPMENT

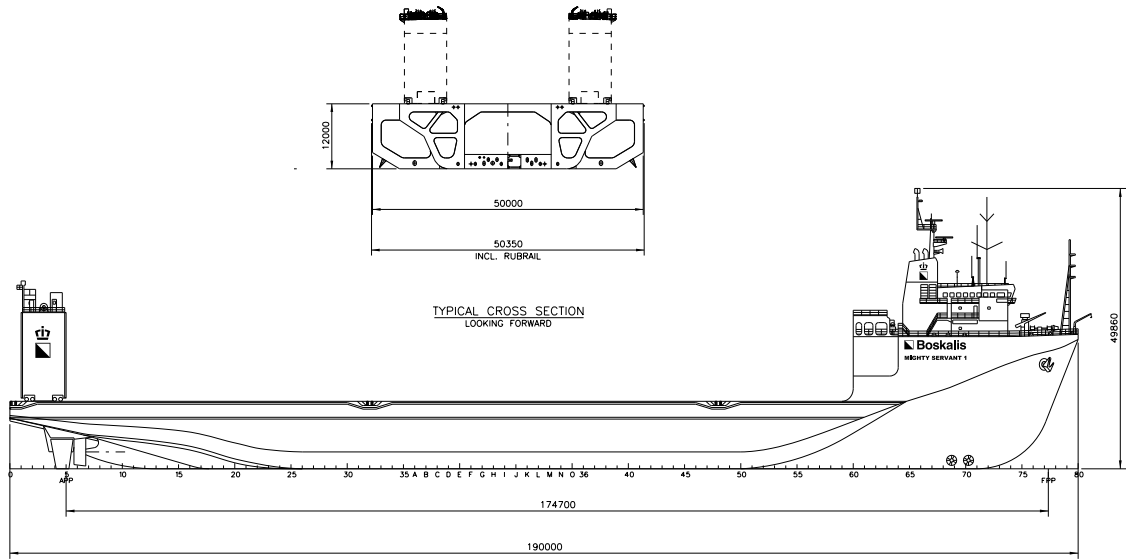
- Two radar, one ARPA coupled
- Two GPS navigator
- Echo sounders fore and aft
- Magnetic log
- Two gyro compasses
- SPOS - Ship Performance Optimisation System
- OCTOPUS - Octopus onboard system (ship motion monitoring and decision support system by Amarcon)

### COMMUNICATIONS EQUIPMENT

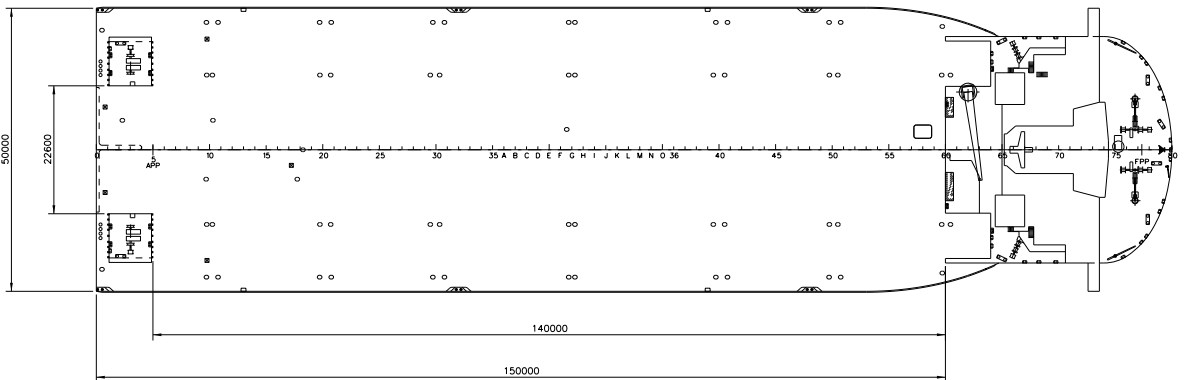
- Inmarsat Mini M and C (telex/telephone/fax)
- SSB radio telephony
- Telex over radio
- VHF radio telephony
- Weather facsimile
- Iridium mobile phone
- NAVTEX receiver
- GMDSS
- Global wireless communication system
- SafetyMax

### BALLASTING

- Four main ballast pumps 2,000 m<sup>3</sup>/hr@ 30 m head
- One fire gen. service pump 90 m<sup>3</sup>/hr@ 60 m head or 170 m<sup>3</sup>/hr@ 30 m head
- One fire bilge pump 90 m<sup>3</sup>/hr@ 60 m head or 170 m<sup>3</sup>/hr@ 30 m head
- One emergency fire pump 45 m<sup>3</sup>/hr@ 60 m head
- Four deballast compressors 3,000 m<sup>3</sup>/hr@ 1 atg
- Two ejector pumps 150 m<sup>3</sup>/hr@ 30 m head



**SIDE VIEW**



**TOP VIEW DECK LEVEL**