


**CONSTRUCTION / CLASSIFICATION**

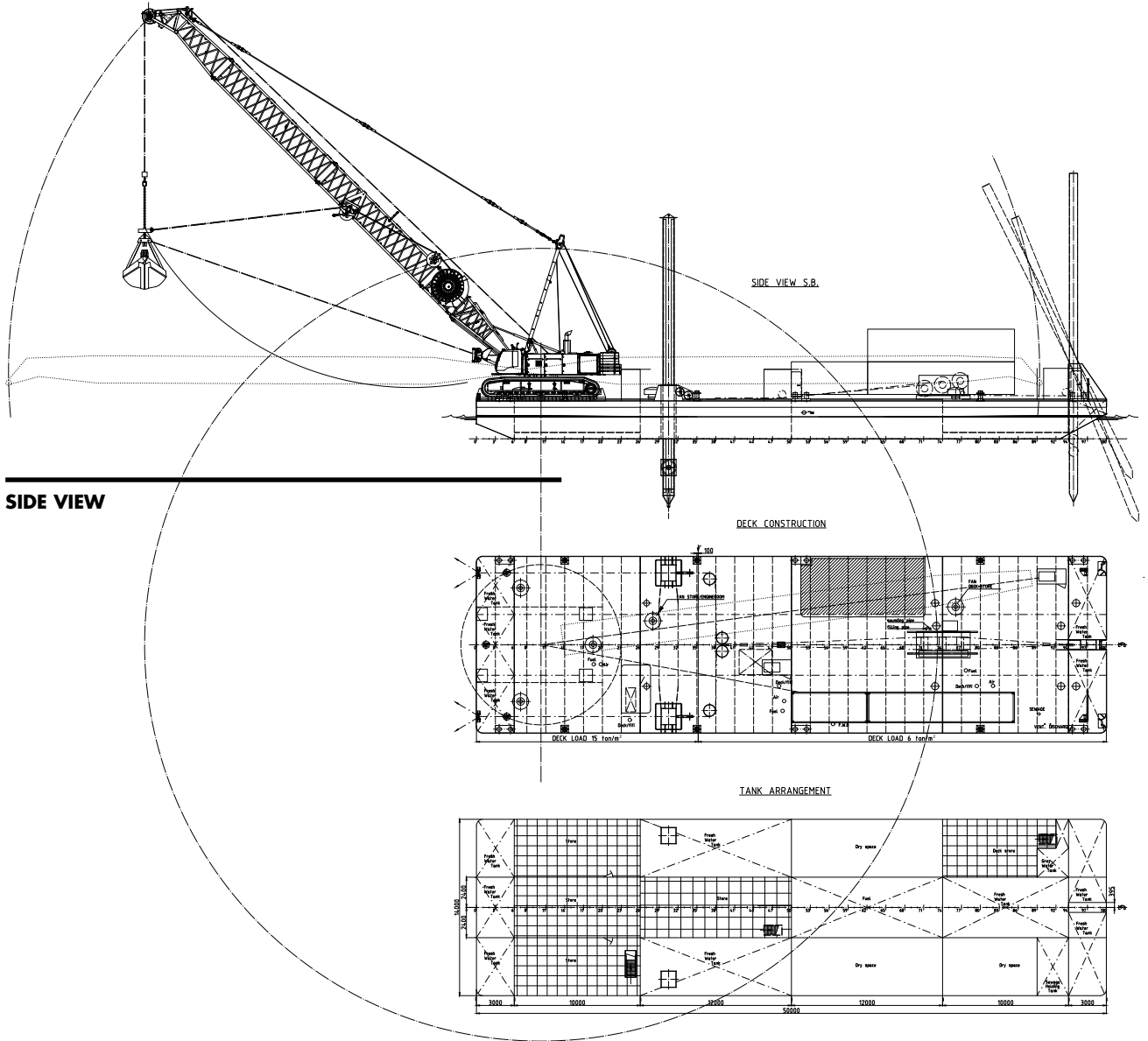
Built by	Yizheng Changrun Shipyard
Year of construction pontoon / crane	2006/2013
Classification	I ✘ HULL Special service / Grab dredger - no propulsion Unrestricted navigation

**FEATURES**

Main spud 26 m, back spud 28 m.
Dredging controlled with CMS II dredging computer
Wide range of rock and bulk materials grabs designed to meet dredging requirements
Positioning spuds and anchors
Fully equipped for tropical conditions.
Max dredging depth on spuds 22 m on spuds and 40 m on anchor.

**MAIN DATA**

Gross tonnage	548 GT
Net tonnage	164 NT
Length overall	48 m
Width	14 m
Moulded depth	3 m
Normal draught	1.6 m
Type of crane	Liebherr HS895HD
Buckets	3.2 - 7.5 m <sup>3</sup>
Main spud	26 m
Back spud	25 m
Total installed power	850 kW



**SIDE VIEW**

**TOP VIEW DECK LEVEL**