

## CONSTRUCTION/CLASSIFICATION

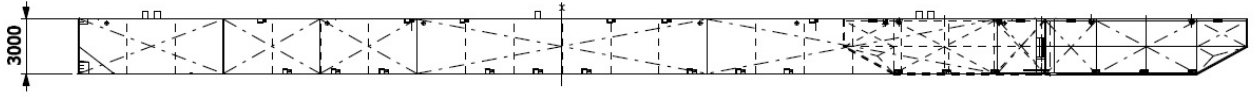
Year of construction	1994
Registration	Rotterdam

## REMARKS

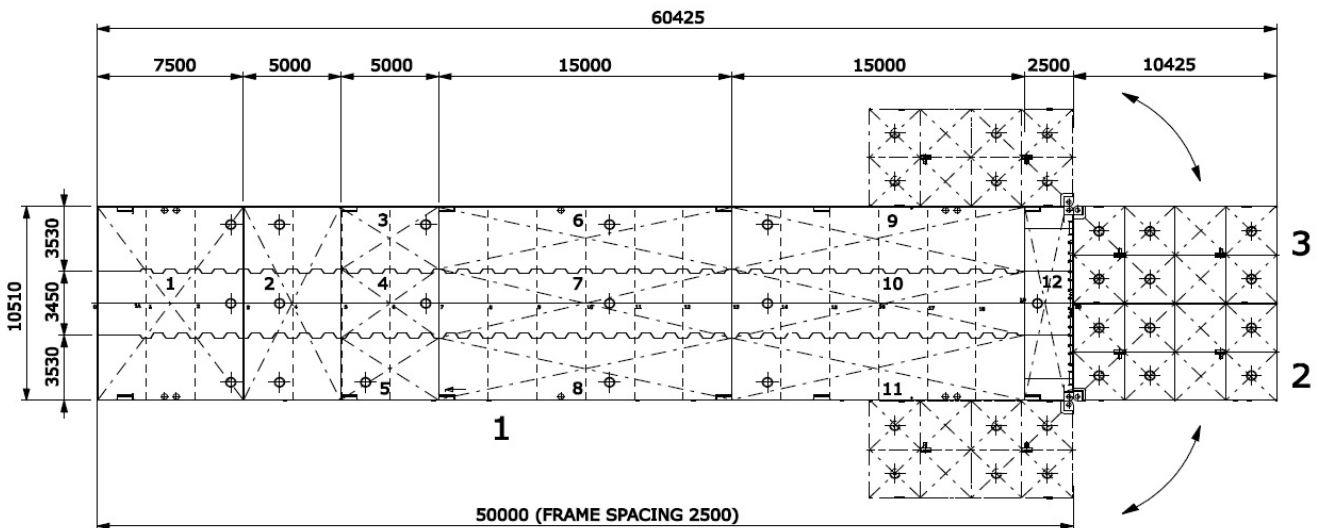
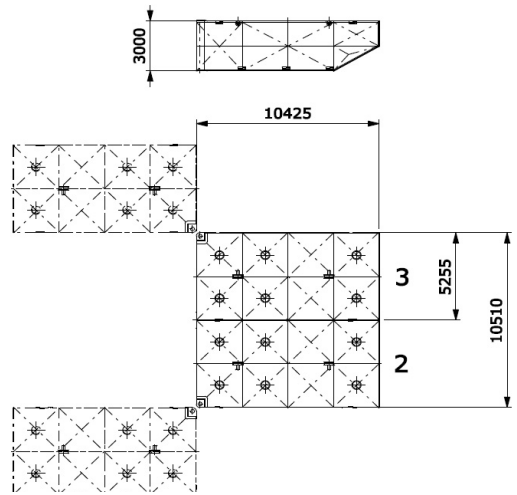
Test arrangements

## MAIN DATA

Principal dimensions	10.425 m x 5.25 m x 3.00 m
Draught empty / loaded	0.55 m / N.A.
Max. tonnage sea / inland	N.A.
Max. deck load	N.A.



**SIDE VIEW**



**TOP VIEW DECK LEVEL**

Royal Boskalis Westminster N.V.  
PO Box 43  
3350 AA Papendrecht  
The Netherlands  
T +31 78 69 69 000  
F +31 78 69 69 555  
royal@boskalis.com  
www.boskalis.com