



## CONSTRUCTION/CLASSIFICATION

Year of construction	2010
Classification	Classification Lloyds Register, ✕ 100A1, ✕ LMC, DP (AA) / Class II, SPS
IMO number	9524932
Call sign	9HA4720
Flag	Malta
Port of registry	Valetta

## FEATURES

Accommodation for 70 people, wheelhouse and accommodation fully air-conditioned/heated, 1x hospital room (not included in total POB).

Survey/ROV control, online and offline surveyrooms, client office facilities, training room, conference room and recreation area.

Where required, the vessel can be fitted with Boskalis work and inspection class ROVs. Deployment over the side with LARS.

Tank capacity: potable water 560 m<sup>3</sup>, fuel oil 560 m<sup>3</sup>, ballast water 1,575 m<sup>3</sup>, lubricating oil 11.3 m<sup>3</sup>

Built in 12 man SAT system with 3 men dive bell through moonpool and 2 air dive systems with LARS over the side

Two separate water makers installed. Total capacity 25 m<sup>3</sup>/day

## MAIN DATA

Gross tonnage	3,578 GT
Length overall	76 m
Breadth	18 m
Depth	6.1 m to maindeck
Deadweight	3,000 t at 5.0 m draught
Main engines	2x 1,360 kW (Caterpillar) 2x 910 kW (Caterpillar)
Emergency generators	1x 250 kW (Caterpillar)
Main propulsion	2x 1,430 kW (Veth/Azimuth)
Forward thrusters	1x 800 kW (Veth/Tunnel) 1x 560 kW (Veth/Azimuth)
Economical speed	10 kn at 11 m <sup>3</sup> /day
Service speed	12 kn at 14 m <sup>3</sup> /day
Station keeping (DP)	~6 m <sup>3</sup> /day
DP classification	DP (AA)/Class II
DP system	Navis
DP reference systems	3x DGPS position 1x Sonardyne USBL 4x Gyro compasses 2x vertical reference units 2x taut wire system 2x wind sensors 1x MRU

## CONSTRUCTOR

DP II OFFSHORE VESSEL / DIVING SUPPORT VESSEL

### DECK EQUIPMENT

Main crane	50 t AHC for single fall, and 100 t AHC for double fall 200/400 msw deployment depth
Auxiliary hoist	15 t at 23.3 m outreach 200 msw deployment depth
With jib extension	10 t at 30 m outreach floating to fixed
Man riding	5 t at 23.3 m
Lashing points	12 x 10 t SWL
Helideck	Construction approved and certified according CAA regulations. Load value approved for Bell 212 and AW139 or smaller D Value 17.6 m or less T Value 6,500 kg or less heli-reception and full emergency equipment

### CARGO AREA

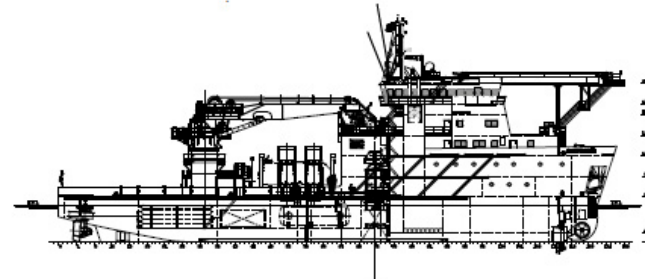
Work deck area	685 m <sup>2</sup>
Deck load	Max. 1,200 t
Deck strength	5 t/m <sup>2</sup>

### DIVE SYSTEMS

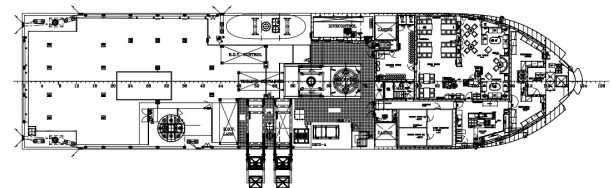
Capacity	12 man SAT system
Diving bell	3 man Sinker type
Depth rating	200 msw
Transfer speed	25 m/min. (wet)
Mixed gas storage	45 m <sup>3</sup> with 2 x gas reclaim systems
Hyperbaric lifeboat	1 x 12 divers + 4 crew, self-propelled, self-contained 72 hrs
Moonpool	1 x diving, 4 m x 4 m
Air diving spread	standard full double air/gas mix dive system

### NAVIGATION AND COMMUNICATION EQUIPMENT

Radar	1 x 12 ft. scanner, S-band 1 x ARPA, 6.5 ft. scanner X-band with additional display at DP console
Magnetic compass	1 x
Echosounder	1 x 200 kHz
Navtex	1 x
Doppler log	1 x bottom and water track
Inmarsat Satcom C	2 x (with SSAS)
Inmarsat Satcom F77	1 x
V-Sat capabilities	1 x
MF / HF DSC transceiver / controller	1 x
SART radar responders	2 x
Epirb, hydroacoustic release	1 x
VHF radio transceiver DSC FD	2 x
Private Automatic Branch Exchange	1 x



### SIDE VIEW



### TOP VIEW DECK LEVEL

**Boskalis**  
PO Box 43  
3350 AA Papendrecht  
The Netherlands  
T +31 78 69 69 000  
offshore.energy@boskalis.com  
www.boskalis.com/offshore