

EQUIPMENT SHEET

PRINS DER NEDERLANDEN
TRAILING SUCTION HOPPER DREDGER



CONSTRUCTION / CLASSIFICATION

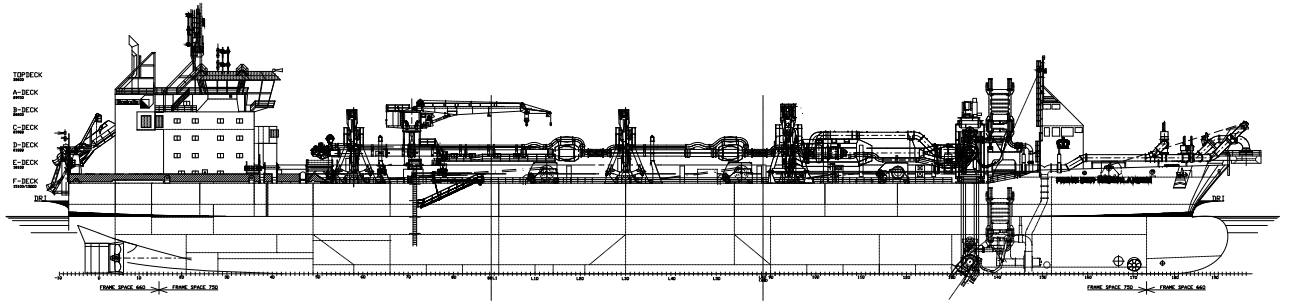
Vessel built by	Merwede Shipyard
Year of construction	2004 (2022 lengthening)
Classification	BV ✕ Hull ✕ Mach ✕ AUT-UMS Hopper dredger, MON-SHAFT Unrestricted navigation. Dredging within 15 miles from shore or within 20 miles from port. Dredging over 15 miles from shore with Hs < 3.5 m

FEATURES

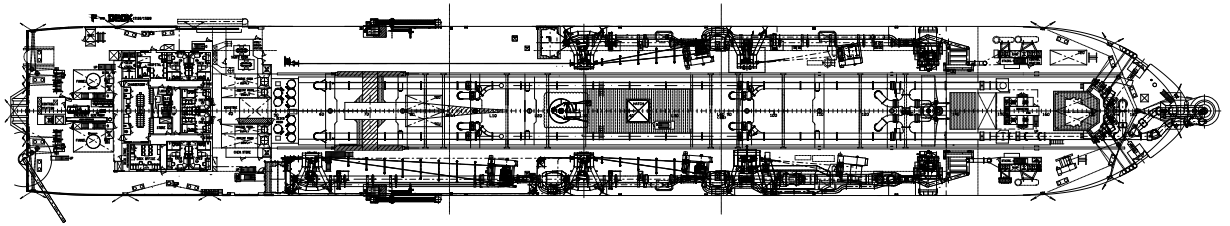
Long suction pipe with underwater pump.
5 gravity-gantries.

MAIN DATA

Gross tonnage	23,985 GT
Length overall	201.00 m
Breadth	28.00 m
Moulded depth	15.00 m
Max.draught empty	7.00 m
Max. draught Int. load line	9.24 m
Max. draught dredging load line	12.1 m
Carrying capacity (D.W.)	39,335 t
Hopper capacity (top overflow)	20,997 m ³
Hopper capacity (top coaming)	22,205 m ³
Suction pipe diameter	2 x 1.00 m
Max. dredging depth	100.0 m
Discharge systems	bottom doors/pump ashore/ rainbow installation
Sailing speed loaded	15.4 kn
Sailing speed empty draught	17.5 kn
Total installed power	19,500 kW
Sand pump output	5,000 kW
Jet pump output	3,000 kW
Pump ashore output	8,800 kW
Propulsion power sailing	14,000 kW
Bow thruster	1,500 kW



SIDE VIEW



TOP VIEW DECK LEVEL