

# EQUIPMENT SHEET

## GIANT 6

SEMI-SUBMERSIBLE BARGE

(SPECIFICATIONS ALSO APPLICABLE TO GIANT 5)



### CONSTRUCTION / CLASSIFICATION

Year of construction	2014, delivery January 2015
Classification	Lloyds Register +100 A1 Pontoon, Submersible to a maximum draught of 17 m, IWS, WDL (20 t/m <sup>2</sup> )
IMO number	9725665
Registration	Singapore

### SUBMERGING PARTICULARS

Submersible draught aft	17.0 m
Submersible draught fwd	17.0 m
Grounding draught aft	20.0 m
Removable buoyancy tanks	

### CARGO CAPACITY

Deadweight	21,000 t
Deck area	4,500 m <sup>2</sup>
Free deck length	120 m
Deck load	20 t/m <sup>2</sup>

### MAIN TOWING BRIDLE

Stud link chain	2 x 25 m 76 mm U3 + triangle plate
Bridle recovery	A-frame with winch

### MAIN DATA

Length	137.00 m
Breadth	36.00 m
Depth	8.50 m
Draught (empty)	1.87 m
Draught (loaded)	6.45 m
Light weight ship	7,250 t

### BALLAST SYSTEM

Type	Diesel-electric pumps unmanned pump rooms redundant ballast system
Pump capacity max.	6,400 m <sup>3</sup> /h (4 x 1,600 m <sup>3</sup> /h)
Main generators	890 kW (2 x 445 kW)
Auxiliary generator	65 kW
Ballast water treatment	2 x 500 m <sup>3</sup> /h (UV system)

### ACCOMMODATION

Spacious control room on top deck with all ballast controls and good view on main deck and surroundings. Below a mess room and kitchen with toilet and 4 beds. All accommodation is fully air-conditioned.

Stores	2 x 100 m <sup>2</sup>
Additional storage space	2 x 20' container fitting on foredeck

## GIANT 6

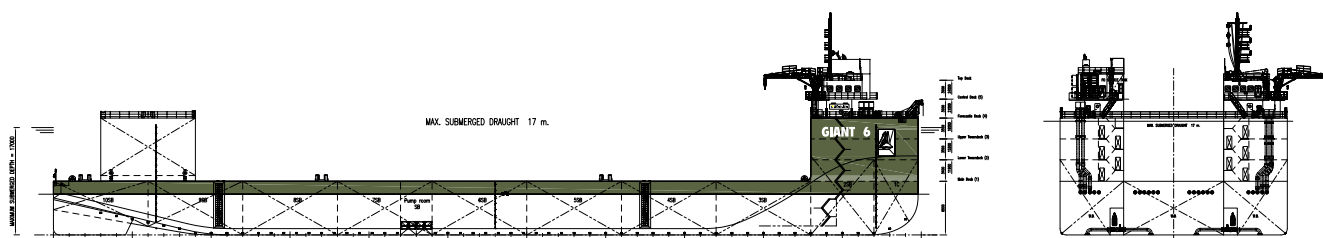
SEMI-SUBMERSIBLE BARGE  
(SPECIFICATIONS ALSO APPLICABLE TO GIANT 5)

### DECK EQUIPMENT

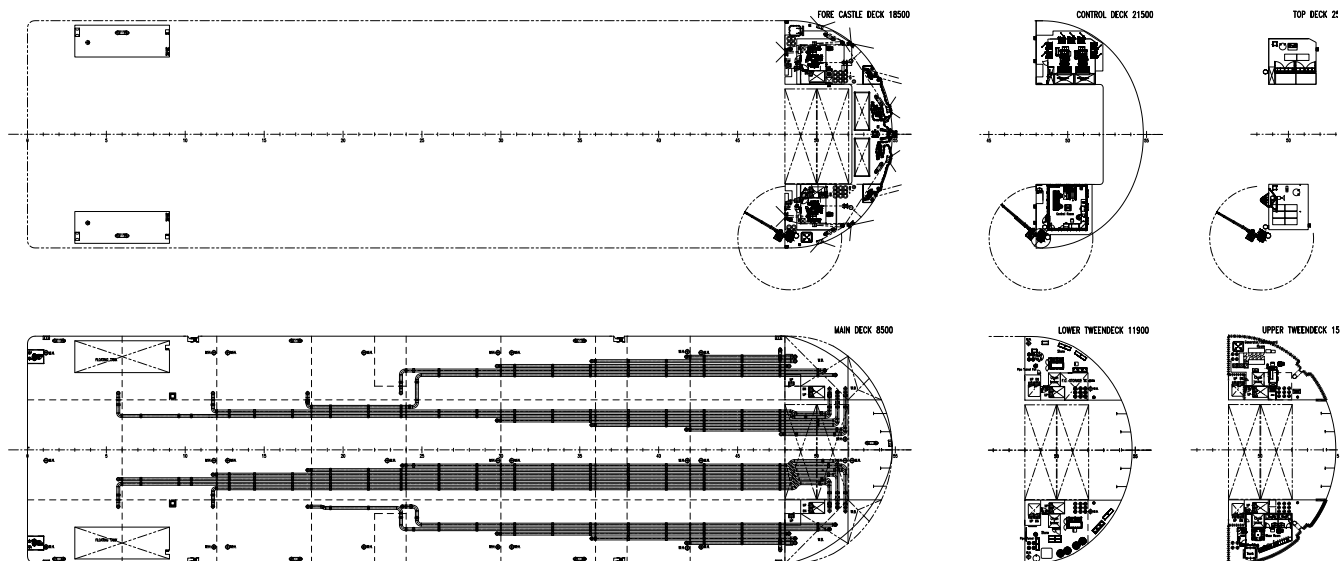
Anchor/mooring winch	2 x located inside housing
Anchor (2x)	HHP anchor 4,200 kg
Chain	220 m, 76 mm chain U3
Line pull (2x)	300 kN @ 10 m/min
Steel wire rope	200 m ø 40 mm
Store crane	1 x rated 3 t @ 8 m radius

### DESIGN

Concept	SMIT
Hull shape	Marin optimized for low drag and high course stability by CFD & model tests
Basic design	Vuyk Engineering



### SIDE VIEW



### TOP VIEW