



## CONSTRUCTION/CLASSIFICATION

Type of barge	Multipurpose barge/cable lay barge (according SPS rules)
Class & Trading area	Bureau Veritas, unrestricted navigation at site: max. 60 P.O.B/ max. 200 nm offshore

## PRINCIPAL DIMENSIONS

Length overall	80.0 m
Width	28.0 m
Height	6.0 m
Maximum draft	2.80 m
Freeboard at max. draft	1.54 m
Cargo capacity	approx. 3,050 t (2,190 t with maximum consumables)
Maximum payload	7,725 t
Deck load max.	15 t/m <sup>2</sup>
Optional	4 spuds Ø 914 mm
Generating plant	2 x 850 kW and 1 x 350 kW
Ballast system	Central operated pump capacity 2 x 250 m <sup>3</sup> /hr
Ballast tank capacity	900 m <sup>3</sup>
Fresh water capacity	200 m <sup>3</sup>
Fuel capacity	400 m <sup>3</sup>

## ACCOMMODATION

60 person on board accommodation/barge complies with the SOLAS Regulations. Sewage treatment plant compliant with MARPOL

## MOORING SYSTEM

Type	8 nos hydraulic mooring winches
Pulling force first layer	60 t at 7.5 m/min hauling, low speed 30 t at 22.5 m/min hauling, high speed
Holding force	120 t hydraulic operated drum brake
Drum capacity	1,000 m Ø 48 mm wire
Anchors	6 x 7 t SSHP, 2 x 5 t SSHP

## DECK EQUIPMENT

2 x hydraulic 10 t winch, 120 m Ø 22 mm wire  
 1 x hydraulic 10 t CT winch, 120 m Ø 22 mm wire  
 3.6 m and/or 2.5 MBR quadrant with sliding system to deploy quadrant

**CRANE**

Make alternatives	Liebherr Crawler crane, or
Model	LR 1250 Litronic
Turntable	1 x turntable height inside 4.20 m loading arm designed for 3.6 m MBR products

Pull-winch 125 t (max.) for plough operations. Winches are full constant tension with free wheel function and equipped with winch pay out/line pull measurement and tension readout system

Chute 3.0 m radius, top 7.50 m wide Chute capable of pivoting hydraulic and deploy 3.6 m radius quadrant for second pull operations

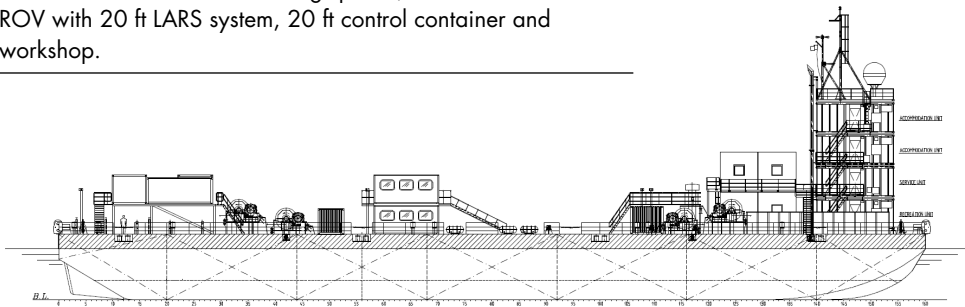
LCE Tensioner 1 x 10 t tensioner between LCE and Chute there is 25 m of free deck space for cable handling operations (install cable protection, jointing operations etc.)

**OPTIONAL EQUIPMENT**

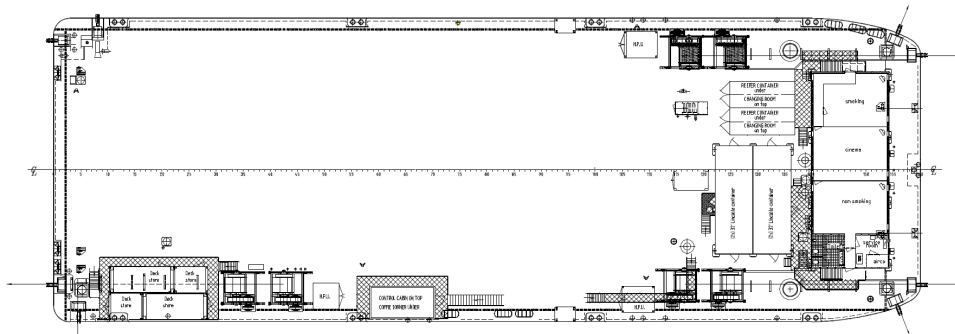
1 extra turntable

Static tanks

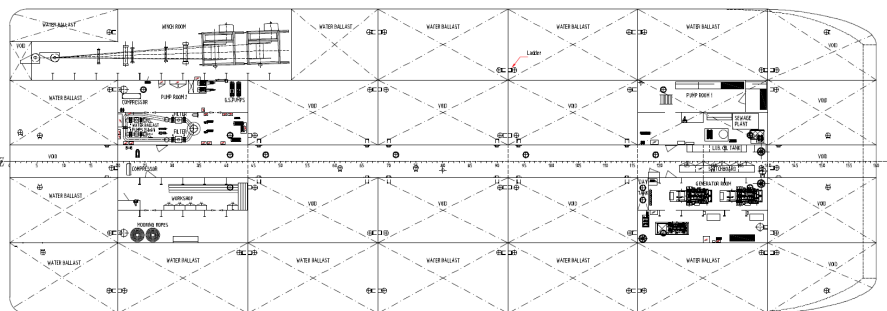
Portside frame suitable for diving spread/basket or Workclass ROV with 20 ft LARS system, 20 ft control container and workshop.



**SIDE VIEW**



**TOP DECK VIEW**



**TOP VIEW**