

**TRANSHELL**

SEMI-SUBMERSIBLE HEAVY TRANSPORT VESSEL


**CONSTRUCTION/CLASSIFICATION**

Built by	Turku Shipyard Finland
Year of construction	1987
Classification	Bureau Veritas   ⚓ HULL, ⚓ MACH, Special service, Semi submersible heavy lift vessel, unrestricted navigation, MON-SHAFT, ICE CLASS ID, MACH
IMO number	8512279
Flag	Curaçao
Port of registry	Willemstad

**MAIN DATA**

Length overall	173.00 m
Breadth moulded/max	40.00 m
Depth	12.00 m
Draft submerged at FPP/APP	22.00 m
Summer draft	8.80 m
Deck space [l x w]	132.00 x 40.00 m
Deadweight	34,030 t
Trial speed	15.5 kn
Total installed power	16,420 kW
Main engines	2 x 6,750 kW

Main propulsion	2 x 6,750 kW c.p. propellers
Bow thruster	2 x 500 kW

**NAVIGATION EQUIPMENT**

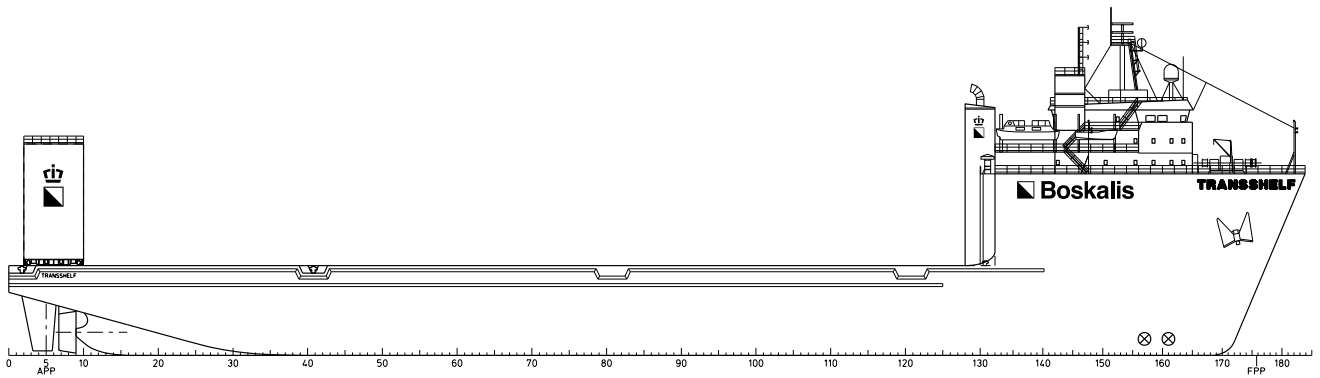
- Two radar, one ARPA coupled
- One GPS navigator
- Echo sounders fore and aft
- One gyro compass
- Magnetic log
- SPOS - Ship Performance Optimisation System
- OCTOPUS - Octopus onboard system (ship motion monitoring and decision support system by Amarcon)

**COMMUNICATIONS EQUIPMENT**

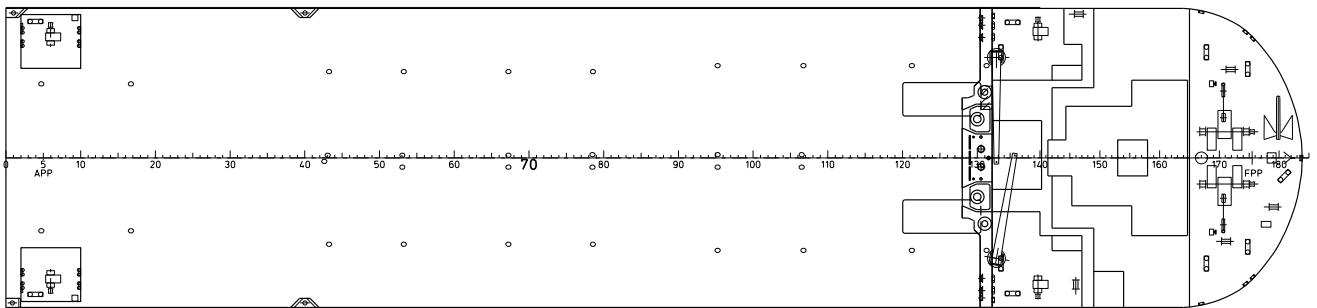
- Inmarsat B and C (telex/telephone/fax)
- SSB radio telephony
- VHF radio telephony
- Weather facsimile
- NAVTEX receiver
- GMDSS

**BALLASTING**

- Three main ballast pumps 500 m<sup>3</sup>/hr@ 35 m head
- Two main fire pumps 100 m<sup>3</sup>/hr@ 90 m head
- One emergency fire pump 60 m<sup>3</sup>/hr@ 90 m head
- Four ballast/deballast compressors 3,000 m<sup>3</sup>/hr@ 2 atg
- One emergency deballast compressor 3,000 m<sup>3</sup>/hr@ 2 atg



**SIDE VIEW**



**TOP VIEW DECK LEVEL**