

# CAPABILITY SHEET

## DV PLOUGH VESSEL WATER INJECTION DREDGER & PLOUGH VESSEL POSITIONING & PRODUCTION MODULE

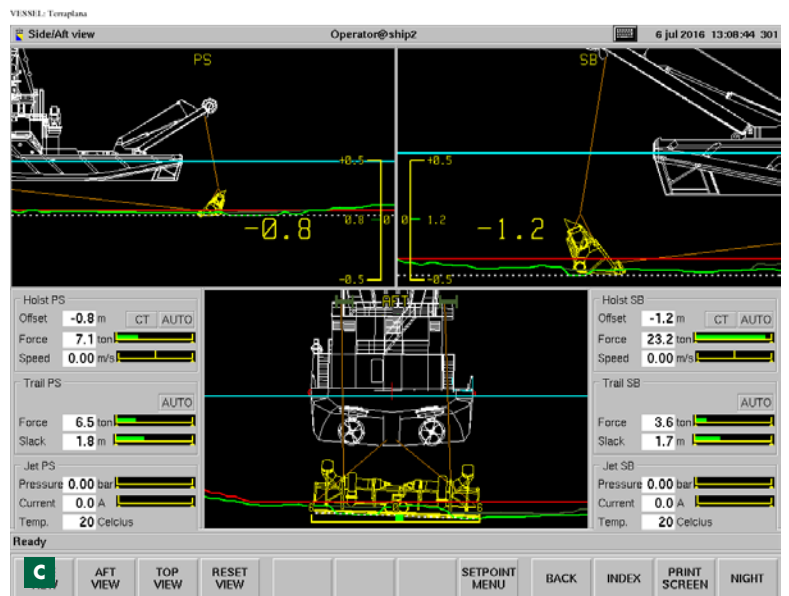
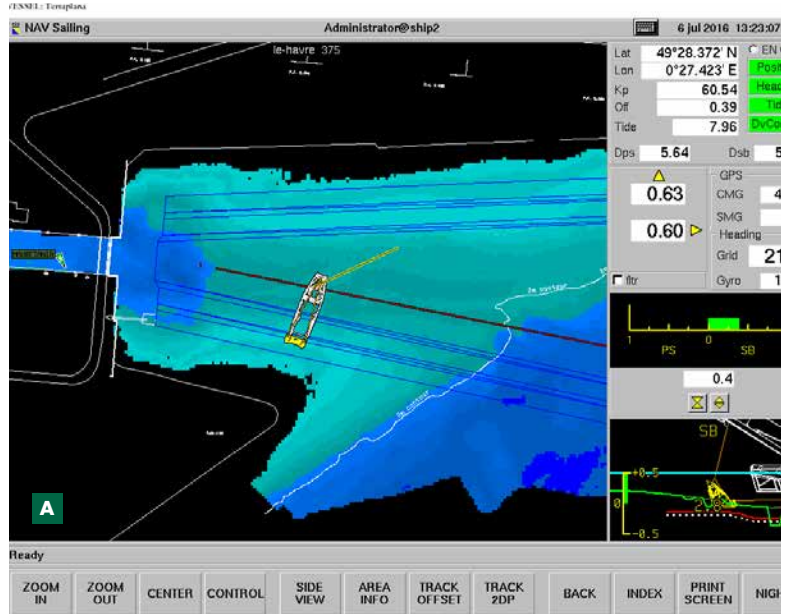
### CUSTOM-TUNED TO INDIVIDUAL VESSELS

DV Plough vessel is the integrated positioning and dredging production module for plough and water injection dredgers (WID) and is custom-tuned to individual vessels.

DV Plough integrates precise 3D positioning and project-specific design data, survey results and Plough bar or WID nozzle beam depth and status data. Graphical displays in plan, side and aft are provided to assist the operator in optimizing the ploughing/dredging process.

If the plough or WID nozzle beam is installed on a towed or pushed pontoon, both the pontoon and the tug have displays to show positioning and tool depth. During ploughing/dredging, on screen bathymetry data are updated in real-time to show project progress between hydrographic surveys.

All process and position parameters are logged at a selectable interval in ASCII format and can be automatically transferred to shore on a daily basis. These parameters include plough/nozzle beam depth, vessel position (XYZ) and optionally plough forces.



- A** DV Plough vessel navigation display Terra Plana
- B** Plough vessel and water injection dredger Terra Plana
- C** DV Plough vessel side-aft display Terra Plana

Royal Boskalis Westminster N.V.  
PO Box 43  
3350 AA Papendrecht  
The Netherlands  
T +31 78 69 69 000  
F +31 78 69 69 555  
royal@boskalis.com  
www.boskalis.com